

Ben Allman
Estate & Letting Agents



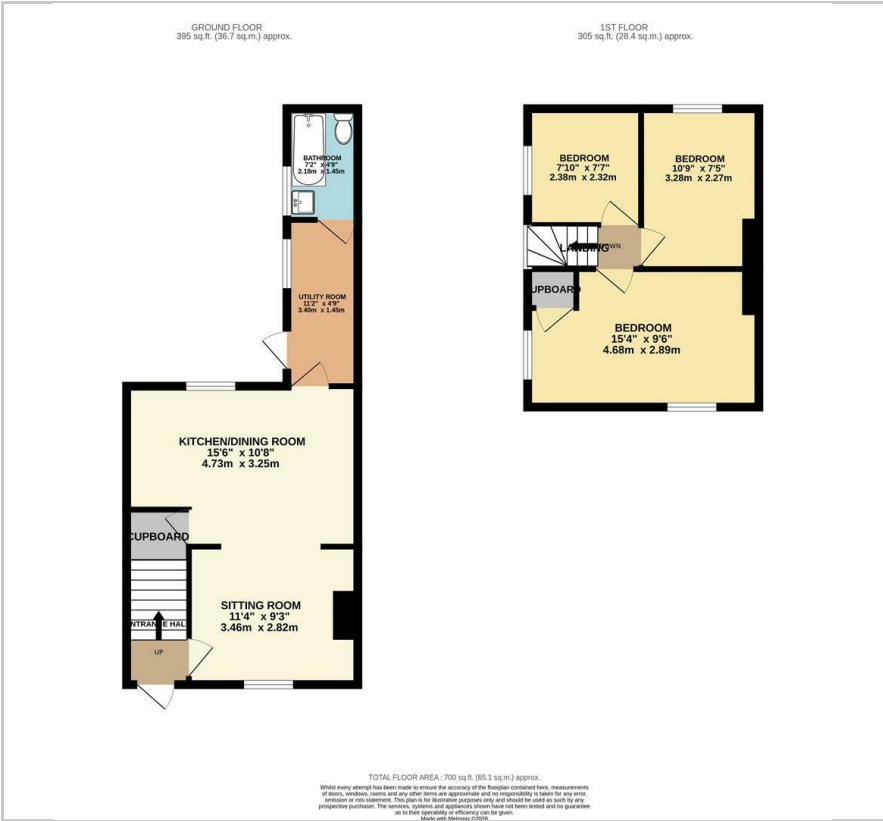
9 Primrose Crescent

Thorpe St Andrew, Norwich, NR7 0SE

Offers in excess of £245,000



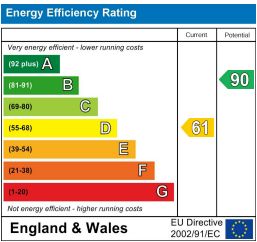
Floor Plan



Area Map



Energy Efficiency Graph



Viewing

Please contact our Ben Allman Estate Agents Office on 01603 555577 if you wish to arrange a viewing appointment for this property or require further information.

- Beautifully Presented Three Bedroom
- Modern Open-Plan Living Space
- Semi-Detached House
- Contemporary Ground Floor Bathroom
- Utility Room
- Corner Plot With Private Lawned Front Garden Set Behind Mature Hedging And Landscaped Rear Courtyard
- Gas Central Heating And Fully Double Glazed
- Walking Distance To Local Amenities
- EPC Rating - D



This beautifully renovated 1920's three bedroom semi-detached house is situated within the highly sought-after suburb of Thorpe St Andrew and offers stylish, modern living finished to an excellent standard throughout.

The accommodation is approached via an entrance hall which leads into an impressive open-plan lounge, kitchen and dining area, creating a bright and inviting living area. The ground floor is further enhanced by a useful utility room and a contemporary bathroom, all thoughtfully designed.

To the first floor, there are three well-proportioned bedrooms accessed from the landing, providing comfortable accommodation for families or those seeking additional space for home working.

Outside, the property enjoys a lawned front garden, privately positioned behind mature hedging. While to the rear is an enclosed garden featuring a timber decked seating area. The home benefits from double glazing and gas central heating and has been comprehensively renovated in recent years, making it an ideal purchase for buyers seeking a turnkey property in a popular and convenient location.



These particulars, whilst believed to be accurate are set out as a general outline only for guidance and do not constitute any part of an offer or contract. Intending purchasers should not rely on them as statements of representation of fact, but must satisfy themselves by inspection or otherwise as to their accuracy. No person in this firm's employment has the authority to make or give any representation or warranty in respect of the property.