

Ben Allman
Estate & Letting Agents



47 Greenacre Close

Brundall, Norwich, NR13 5QF

Guide price £280,000



3



1

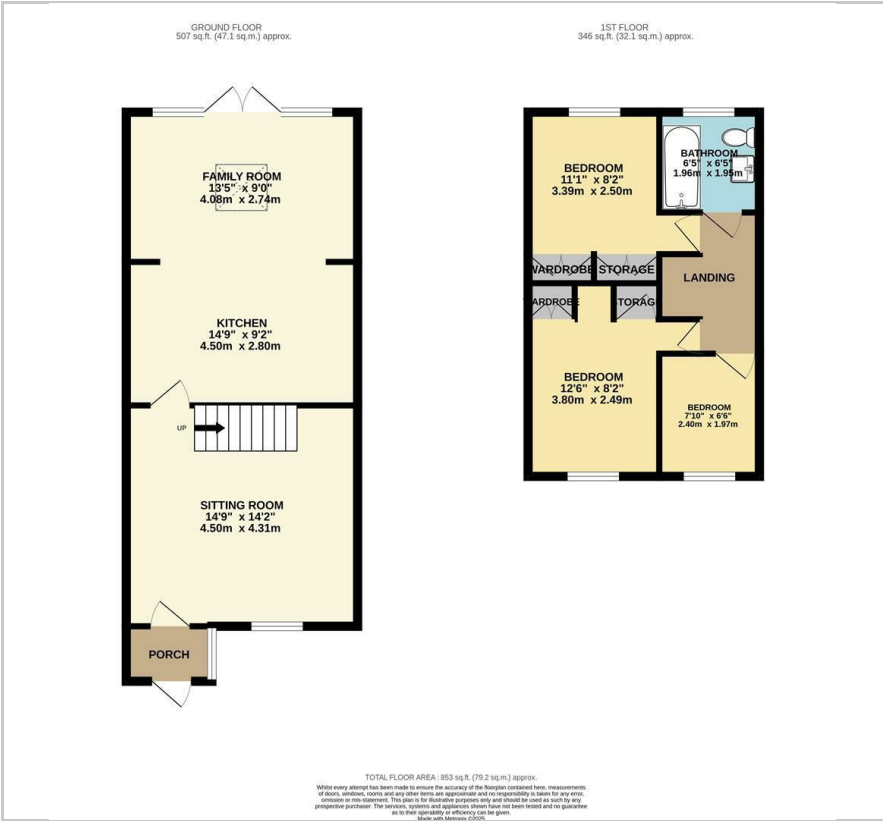


2



C

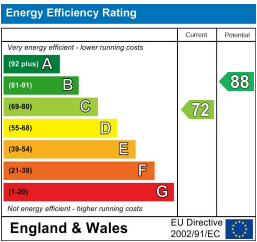
Floor Plan



Area Map



Energy Efficiency Graph



Viewing

Please contact our Ben Allman Estate Agents Office on 01603 555577 if you wish to arrange a viewing appointment for this property or require further information.

- Extended Semi-Detached House
- Beautiful Open-Plan Kitchen/Family Room Installed In 2021
- Seperate Sitting Room
- Porch Entrance
- Three Bedrooms Off-Landing
- Elegantly Upgraded Bathroom
- South-Facing Rear Garden
- Garage To Rear With Side Access And Parking Space + Additional Parking Space By The Side Of The Property
- Upgraded Rear Windows And Doors In 2023
- EPC Rating - C



This beautifully upgraded and extended three-bedroom semi-detached home is located within the sought-after Berryfields development in the thriving village of Brundall, just east of Norwich. The property has been thoughtfully improved throughout, offering a stylish and contemporary living space ideal for families.

A convenient porch leads into a bright and inviting sitting room, tastefully decorated and featuring stairs rising to the first floor. To the rear, the property has been extended to create a stunning open-plan kitchen and family room, complete with a skylight that floods the space with natural light.

Upstairs, the landing gives access to three beautifully presented bedrooms, each finished to a high standard, together with a sleek and modern family bathroom.

Outside, the property enjoys a private and enclosed rear garden with direct access to the garage and an allocated parking space. A further gravelled driveway to the side provides additional off-road parking.

Situated in the popular village of Brundall, this wonderful home benefits from a range of local amenities, excellent schools, and convenient transport links to Norwich and the Norfolk Broads, making it the perfect choice for families and professionals.



These particulars, whilst believed to be accurate are set out as a general outline only for guidance and do not constitute any part of an offer or contract. Intending purchasers should not rely on them as statements of representation of fact, but must satisfy themselves by inspection or otherwise as to their accuracy. No person in this firms employment has the authority to make or give any representation or warranty in respect of the property.