

Ben Allman
Estate & Letting Agents



103 Witard Road

, Norwich, NR7 9XF

Guide price £280,000



3



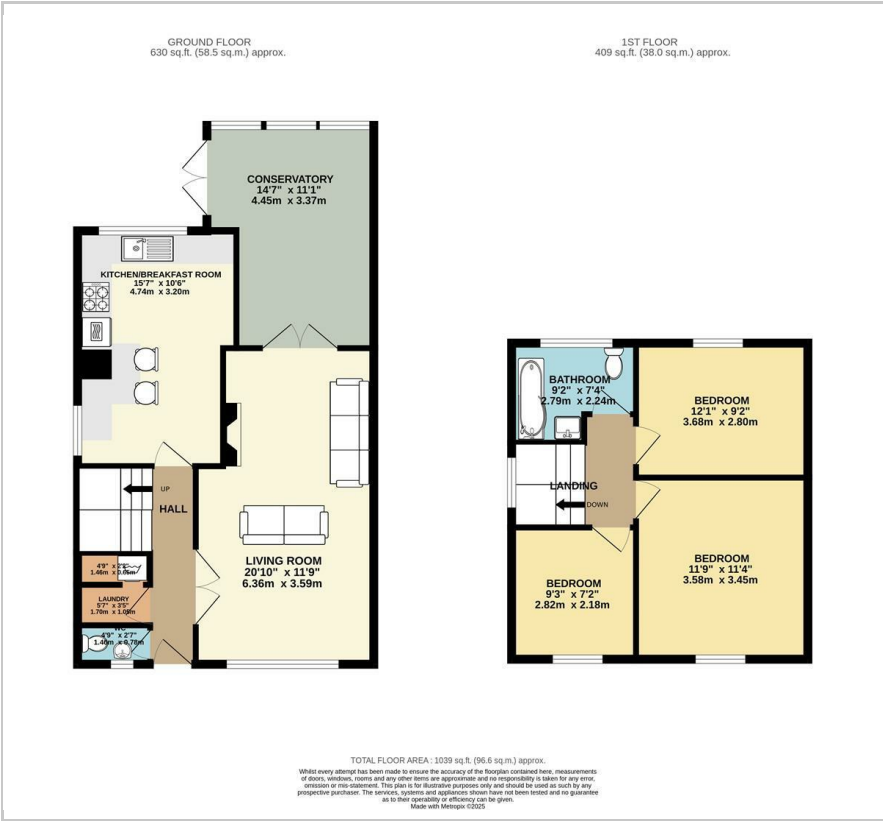
1



2



Floor Plan



Area Map



Energy Efficiency Graph



Viewing

Please contact our Ben Allman Estate Agents Office on 01603 555577 if you wish to arrange a viewing appointment for this property or require further information.

- Three Bedroom End Terrace House
- Extended And Renovated
- Modern Kitchen/Breakfast Room
- Large Conservatory
- Ground Floor WC
- First Floor Modern Bathroom
- Driveway For Ample Parking
- Low Maintenance And Enclosed Rear Garden
- Guide Price £280,000 - £290,000

****Guide Price £280,000 - £290,000**** This beautifully renovated and thoughtfully extended three-bedroom end-terrace home is presented in excellent condition throughout and offers spacious, modern living. The ground floor is centred around a stunning open-plan kitchen and breakfast room, flowing seamlessly into a generous sitting room which opens into a large conservatory, A convenient ground floor WC completes the accommodation on this level.

Upstairs, the property offers three well-proportioned bedrooms, all served by a contemporary, modern bathroom finished to a high standard.

Externally, the home continues to impress with a recently upgraded driveway providing ample off-road parking. To the rear is an excellently low-maintenance garden, thoughtfully landscaped with shingle and paving, offering an attractive and practical outdoor space to enjoy with minimal upkeep.



These particulars, whilst believed to be accurate are set out as a general outline only for guidance and do not constitute any part of an offer or contract. Intending purchasers should not rely on them as statements of representation of fact, but must satisfy themselves by inspection or otherwise as to their accuracy. No person in this firms employment has the authority to make or give any representation or warranty in respect of the property.