

Ben Allman
Estate & Letting Agents



44 Tiercel Avenue

, Sprowston, NR7 8JN

Offers in excess of £350,000



3



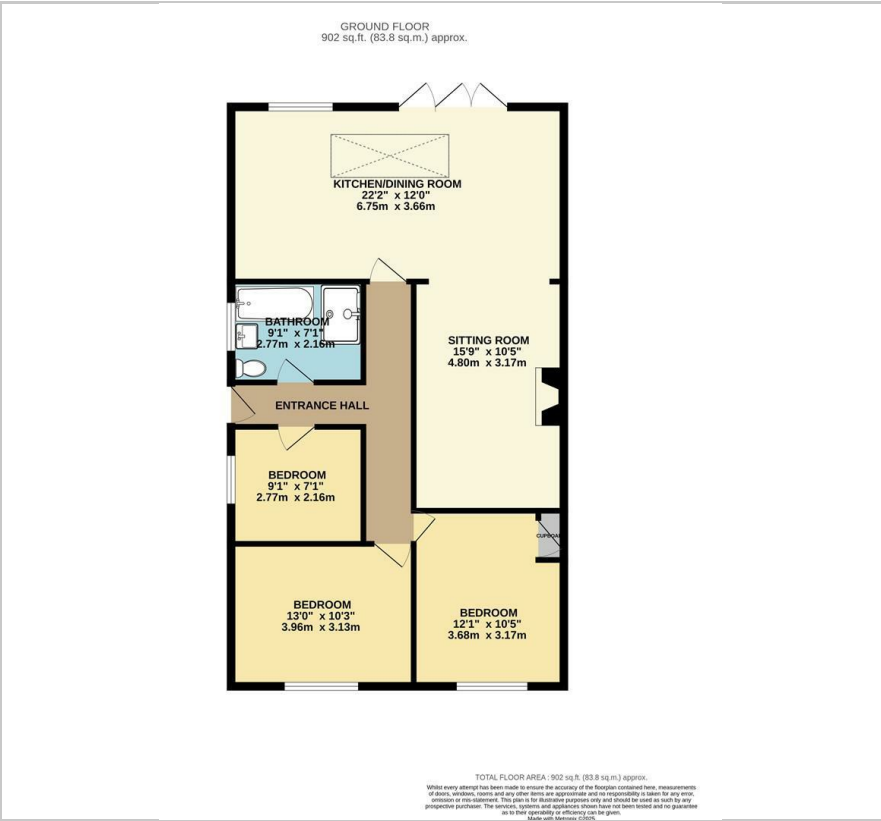
1



1



Floor Plan



Area Map



Energy Efficiency Graph



Viewing

Please contact our Ben Allman Estate Agents Office on 01603 555577 if you wish to arrange a viewing appointment for this property or require further information.

- Fully Renovated Semi-Detached Bungalow
- Recently Installed Kitchen And Bathroom
- Upgraded Heating System And Electrics
- Breathtaking Open-Plan Kitchen/Family Room
- Bi-Fold Doors Leading To Extremely Well-Manicured Rear Garden
- Three Bedrooms
- Modern Bathroom With Separate Bath And Shower
- Off-Road Parking for Several Vehicles
- Walking Distance To Large Selection Of Local Amenities
- Vendor Has Found



Prepare to be wowed by this exquisite and perfectly renovated semi-detached bungalow, where no detail has been overlooked! A true gem, it boasts ample off-road parking and an incredible open-plan kitchen/family room that will leave you speechless. From the moment you approach, the home's curb appeal is undeniable, with its pristine white rendered finish and sleek anthracite windows and doors. The gravel driveway offers plentiful space for your vehicles, welcoming you into a home that's as beautiful on the inside as it is on the outside.

Step inside, and you'll find a spacious entrance hall leading to three generously sized bedrooms and a stylish four-piece bathroom that exudes modern luxury. But it's when you continue down the hall that the magic truly happens. Enter the show-stopping open-plan kitchen and family area—an entertainer's dream! Flooded with natural light from the oversized skylight and bi-fold doors, this room is the heart of the home. The expansive L-shape creates the perfect flow, with a cosy sitting room featuring a charming feature fireplace. The gorgeous farmhouse green kitchen with its rich timber-coloured worktops is a visual delight, while integrated white goods add the perfect balance of style and functionality.

Step outside through the bi-fold doors and you'll discover an absolutely stunning garden that's been carefully designed for every occasion. Whether you're lounging on the white porcelain patio, tending to the vibrant flower beds, or hosting a BBQ in the dedicated BBQ area, this garden truly offers something for everyone. The blend of lush lawn, colorful gravel, and beautifully manicured spaces makes it the ideal spot to relax,



These particulars, whilst believed to be accurate are set out as a general outline only for guidance and do not constitute any part of an offer or contract. Intending purchasers should not rely on them as statements of representation of fact, but must satisfy themselves by inspection or otherwise as to their accuracy. No person in this firm's employment has the authority to make or give any representation or warranty in respect of the property.