

Ben Allman  
Estate & Letting Agents



100 Primrose Crescent

Thorpe St Andrew, Norwich, NR7 0SF

Guide price £230,000



2



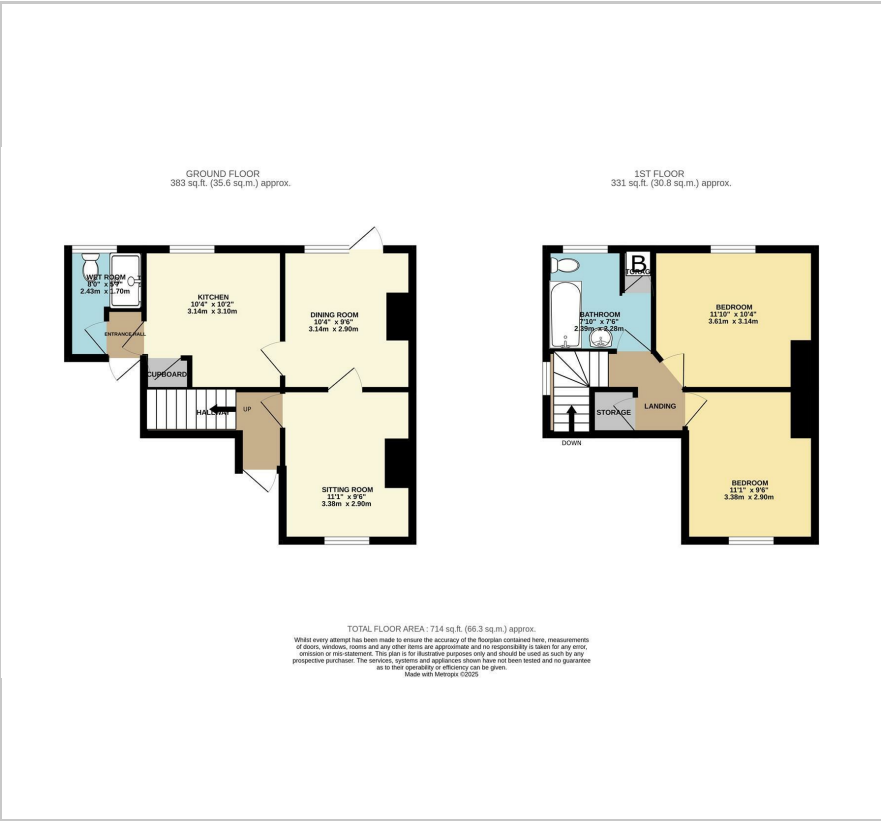
1



2



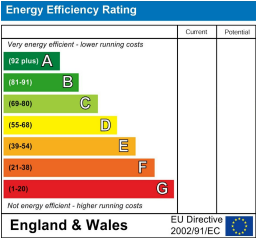
Floor Plan



Area Map



Energy Efficiency Graph



Viewing

Please contact our Ben Allman Estate Agents Office on 01603 555577 if you wish to arrange a viewing appointment for this property or require further information.

- \*Guide Price: £230,000 - £240,000\*
- Upgraded Wren Kitchen In 2022
- Generous Front And Rear Enclosed Gardens
- Walking Distance To Local Amenities
- Gas Central Heating
- Two Bedroom Semi-Detached House
- Sitting Room And Dining Room
- Driveway For Off-Road Parking
- Situated Within The Highly Desirable Thorpe St Andrew District, East Of Norwich
- Ground Floor Wet Room And First Floor Bathroom

\*Guide Price: £230,000 - £240,000\* Located in the highly sought-after eastern suburb of Thorpe St Andrew, this well-presented two-bedroom semi-detached home offers spacious living with generous front and rear gardens.

Thoughtfully improved and meticulously maintained by the current owner, the property now features a modern Wren kitchen, a comfortable sitting room, and a separate dining room on the ground floor. Additionally, a convenient wet room complements the living space downstairs.

Upstairs, the property offers two double bedrooms and a bathroom, each accessed via a central landing, along with two storage cupboards

Outside, the home benefits from an enclosed front garden, mainly laid to lawn, with a private driveway. Whilst the generous rear garden, also laid to lawn, makes this an excellent opportunity for families seeking a property with enclosed outdoor space.



These particulars, whilst believed to be accurate are set out as a general outline only for guidance and do not constitute any part of an offer or contract. Intending purchasers should not rely on them as statements of representation of fact, but must satisfy themselves by inspection or otherwise as to their accuracy. No person in this firms employment has the authority to make or give any representation or warranty in respect of the property.