

Ben Allman  
Estate & Letting Agents



39 Esdelle Street

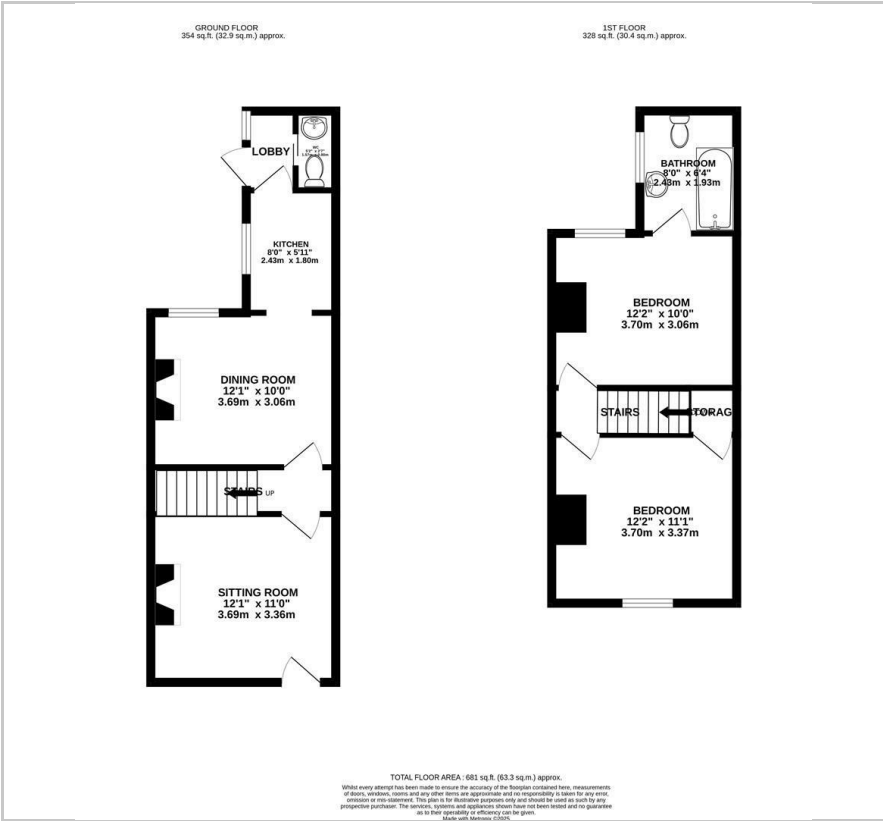
, Norwich, NR3 3BN

Guide price £220,000





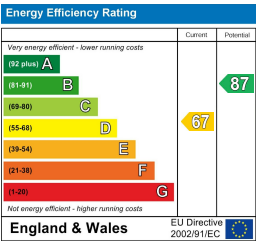
Floor Plan



Area Map



Energy Efficiency Graph



Viewing

Please contact our Ben Allman Estate Agents Office on 01603 555577 if you wish to arrange a viewing appointment for this property or require further information.

- No Onward Chain
- Two Double Bedrooms
- First Floor Bathroom And Ground Floor W/C
- Upgraded By The Current Owners
- Large Rear Garden (Bi-Sected)
- New Carpets Throughout
- Upgraded Bathroom and W/C
- Upgraded Electrics
- Original Open Fireplaces In Sitting Room And Dining Room
- Permit Parking



Tucked away from the road and offered with no onward chain, this beautifully upgraded two-bedroom Victorian terrace blends period charm with contemporary comfort. From the moment you step inside, you'll be struck by the character and quality throughout. The two reception rooms are full of warmth and personality, each boasting a stunning restored Victorian fireplace.

The kitchen is sleek and modern, leading through to a handy lobby/utility space and a stylish ground floor WC - both recently improved by the current owners. Upstairs, two spacious double bedrooms provide peaceful retreats, complemented by a contemporary family bathroom finished to a high standard. Throughout the home, new carpets and upgraded electrics enhance the feel of a lovingly maintained and thoughtfully updated property.



Step outside and you'll discover a real surprise - a generously sized, landscaped rear garden, arranged over two levels. The first tier features low-maintenance artificial grass, while the second boasts a decked seating area framed by mature shrubs, creating a private and serene outdoor space that's perfect for entertaining or unwinding at the end of the day.

These particulars, whilst believed to be accurate are set out as a general outline only for guidance and do not constitute any part of an offer or contract. Intending purchasers should not rely on them as statements of representation of fact, but must satisfy themselves by inspection or otherwise as to their accuracy. No person in this firm's employment has the authority to make or give any representation or warranty in respect of the property.