

Ben Allman  
Estate & Letting Agents



106 Templemere

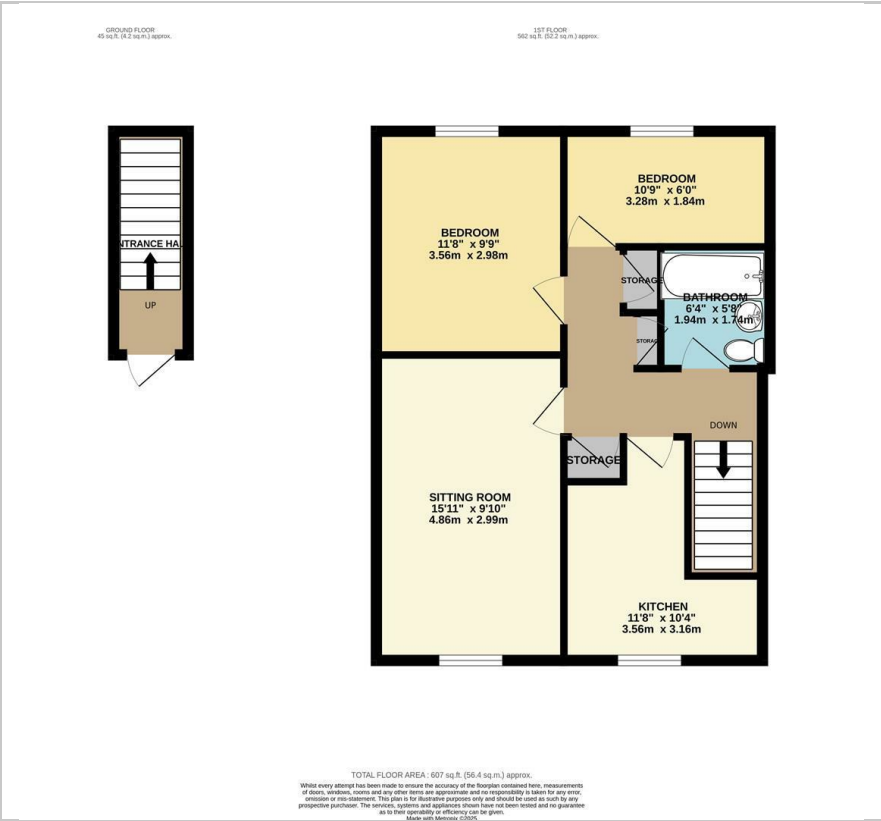
, Norwich, NR3 4EQ

Guide price £150,000





Floor Plan



Area Map



Energy Efficiency Graph



Viewing

Please contact our Ben Allman Estate Agents Office on 01603 555577 if you wish to arrange a viewing appointment for this property or require further information.

- Purpose Built 1970's First Floor Maisonette
- Two Double Bedrooms
- Peaceful Setting To The Rear Of This Popular Residential Estate
- Allocated Parking Space And Further Parking Facilities On The Road
- Long Lease Length Of 947 Years
- Service Charge And Grount Rent £700 Per Annum Total
- Private Entrance
- Double Glazed Throughout
- Gas Central Heating
- EPC Rating - Awaited



Tucked away at the rear of a highly sought-after residential estate and surrounded by mature trees, this stunning two-bedroom first-floor maisonette offers the perfect combination of peace, privacy, and modern living. Boasting its own private entrance, the property opens to a beautifully maintained interior that has been thoughtfully upgraded by the current owner to create a stylish and welcoming home.

Inside, you'll find two generous double bedrooms, both enjoying tranquil, leafy views thanks to the tree-lined rear boundary. The spacious sitting room is flooded with natural light. A contemporary kitchen with sleek finishes and a modern, upgraded bathroom suite add further appeal, while excellent storage solutions are thoughtfully integrated throughout the home.

Ideal for first-time buyers, downsizers, or investors alike, this exceptional maisonette combines comfort, style, and location in equal measure. Early viewing is highly recommended to appreciate all this delightful property has to offer.



These particulars, whilst believed to be accurate are set out as a general outline only for guidance and do not constitute any part of an offer or contract. Intending purchasers should not rely on them as statements of representation of fact, but must satisfy themselves by inspection or otherwise as to their accuracy. No person in this firms employment has the authority to make or give any representation or warranty in respect of the property.