

Ben Allman
Estate & Letting Agents



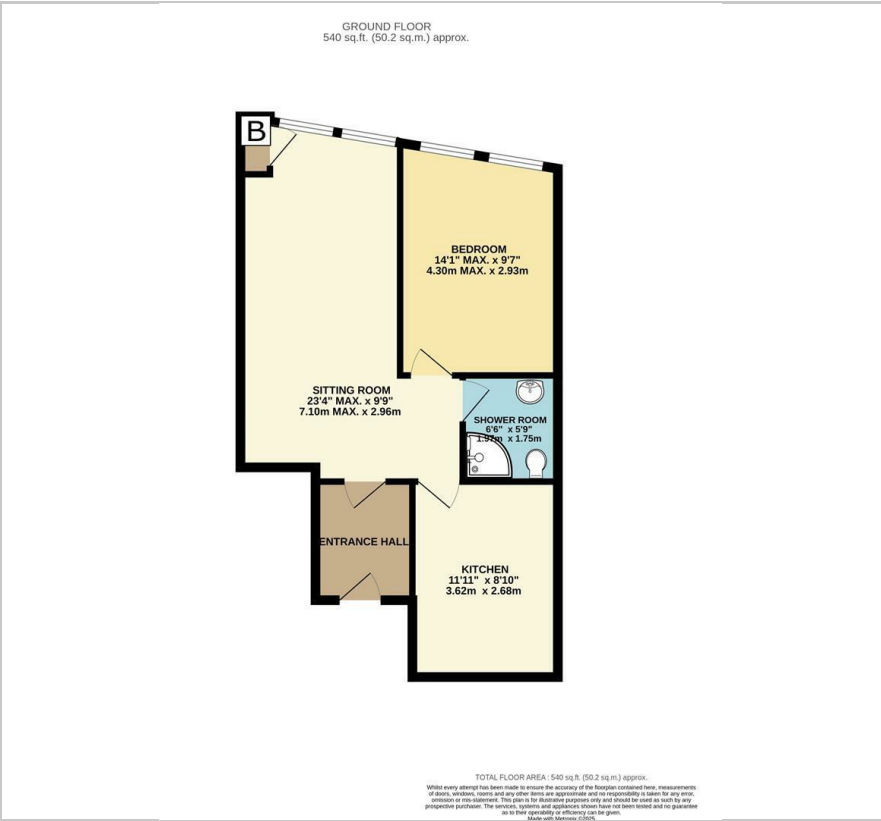
2e Sprowston Road

, Norwich, NR3 4QN

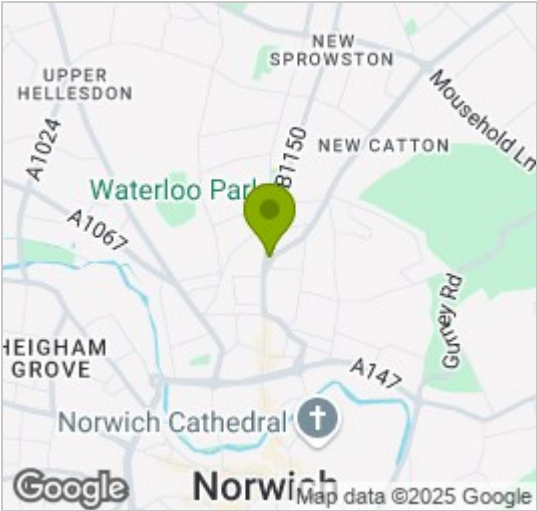
Offers in excess of £130,000



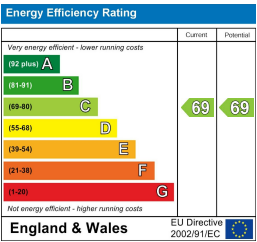
Floor Plan



Area Map



Energy Efficiency Graph



Viewing

Please contact our Ben Allman Estate Agents Office on 01603 555577 if you wish to arrange a viewing appointment for this property or require further information.

- Converted In 2023
- One Double Bedroom
- Modern Fitted Kitchen With Built In Appliances
- 124 Years Remaining On Lease
- We have been advised that the property is connected to mains water and electricity.
- Modern First Floor Apartment
- 23ft Sitting Room With Floor-To-Ceiling Windows
- Within Walking Distance Of Norwich City Centre
- Service Charge for 2024 was £487.64 (Subject To Annual Review) Stephanies of Eaton Management Company
- EPC Rating - C

Stunning First Floor One-Bedroom Apartment in Exclusive Development

This beautifully converted one-bedroom apartment is a rare find and certainly not to be missed! Situated within an exclusive development of just four homes, this first-floor property offers both style and practicality, making it ideal for first-time buyers, professionals, or investors.

Step inside to discover a spacious living area extending over 23ft in length, complete with impressive floor-to-ceiling windows that flood the room with natural light throughout the day. Whether you're entertaining or relaxing, this bright and airy space is sure to impress.

The modern kitchen, only two years old, is well-equipped with a built-in oven, electric hob, and extractor fan. It also offers ample work surface and plenty of storage, making it as functional as it is stylish.

The generously sized bedroom continues the theme of light and space, featuring large windows that create a welcoming atmosphere. A pristine three-piece bathroom suite completes the accommodation, offering a fresh and modern finish.

Recently carpeted throughout, this home is truly move-in ready and perfect for those seeking a turnkey property in a desirable location.



These particulars, whilst believed to be accurate are set out as a general outline only for guidance and do not constitute any part of an offer or contract. Intending purchasers should not rely on them as statements of representation of fact, but must satisfy themselves by inspection or otherwise as to their accuracy. No person in this firm's employment has the authority to make or give any representation or warranty in respect of the property.