

Ben Allman  
Estate & Letting Agents



51 Templemere

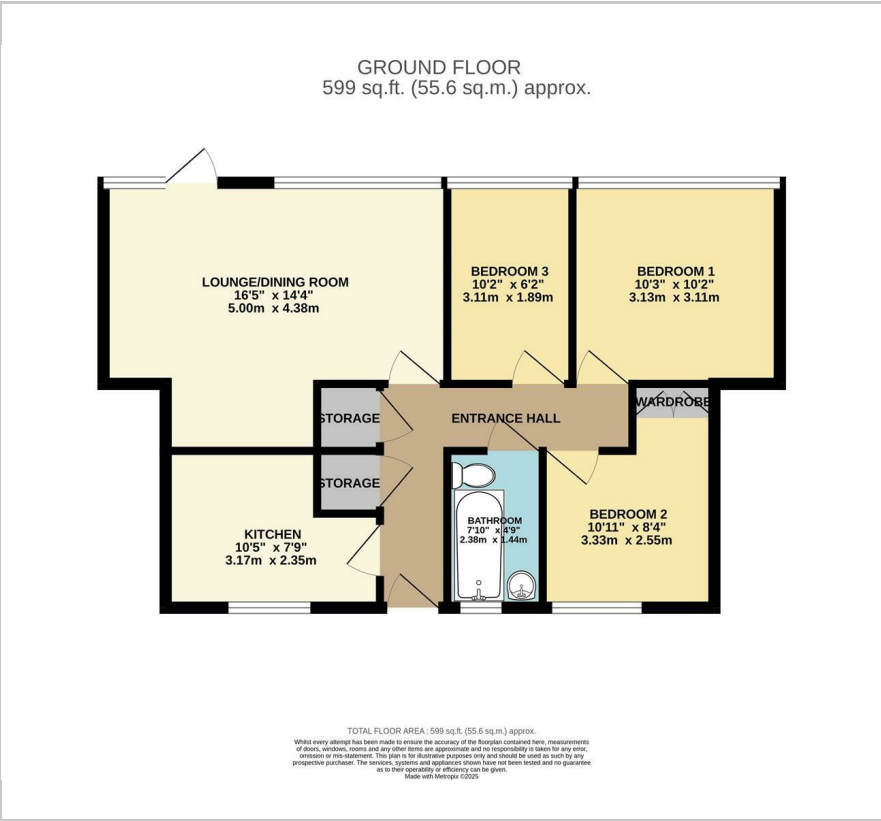
, Norwich, NR3 4EF

Guide price £180,000





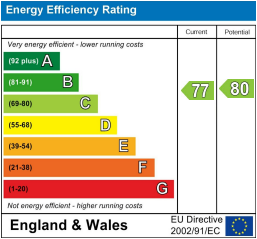
Floor Plan



Area Map



Energy Efficiency Graph



Viewing

Please contact our Ben Allman Estate Agents Office on 01603 555577 if you wish to arrange a viewing appointment for this property or require further information.

- Long Lease Of 947 Years Left - Service Charge
- Ground Floor Apartment
- Around £700 Per Annum
- Full Enclosed South-East Facing Garden
- Garage En-Bloc
- Three Bedrooms
- Upgraded Bathroom Fixtures Within Past 6 Months
- Upgraded Flooring Throughout Within Past 6 Months
- Combi-Boiler Upgraded Around 4 Years Ago
- Gas Central Heating And Fully Double Glazed
- EPC Rating - C



Step into this beautifully presented ground floor apartment, ideally located in the sought-after NR3 area, just a short walk from a fantastic range of local amenities. From the moment you arrive, you'll be struck by the sense of space, natural light, and the peaceful, green surroundings that make this home truly special.

Inside, the property offers three generous bedrooms, an upgraded and stylish bathroom, a well-appointed kitchen, and a stunningly spacious living room measuring an impressive 5m x 4.38m. Large windows throughout flood the space with natural light, creating a bright and airy atmosphere from morning to evening.

One of the standout features is the incredible south-east facing garden—your own private retreat. Lovingly landscaped and bursting with colour, the garden offers a blend of mature flower beds, fruit trees, decorative shingle areas, and a charming paved pathway leading to a sunny patio. It's the perfect spot to unwind, entertain friends, or enjoy a quiet morning coffee surrounded by nature. The garden also includes a storage shed and rear gate for added convenience.

The property comes complete with an en-bloc garage, offering secure parking or additional storage, and is nestled in a well-maintained, friendly development known for its sense of community and leafy appeal.

Whether you're a first-time buyer, downsizer, or simply looking for a home that offers something extra, this apartment is a rare find—and early viewing is strongly recommended!



These particulars, whilst believed to be accurate are set out as a general outline only for guidance and do not constitute any part of an offer or contract. Intending purchasers should not rely on them as statements of representation of fact, but must satisfy themselves by inspection or otherwise as to their accuracy. No person in this firm's employment has the authority to make or give any representation or warranty in respect of the property.