

Ben Allman
Estate & Letting Agents



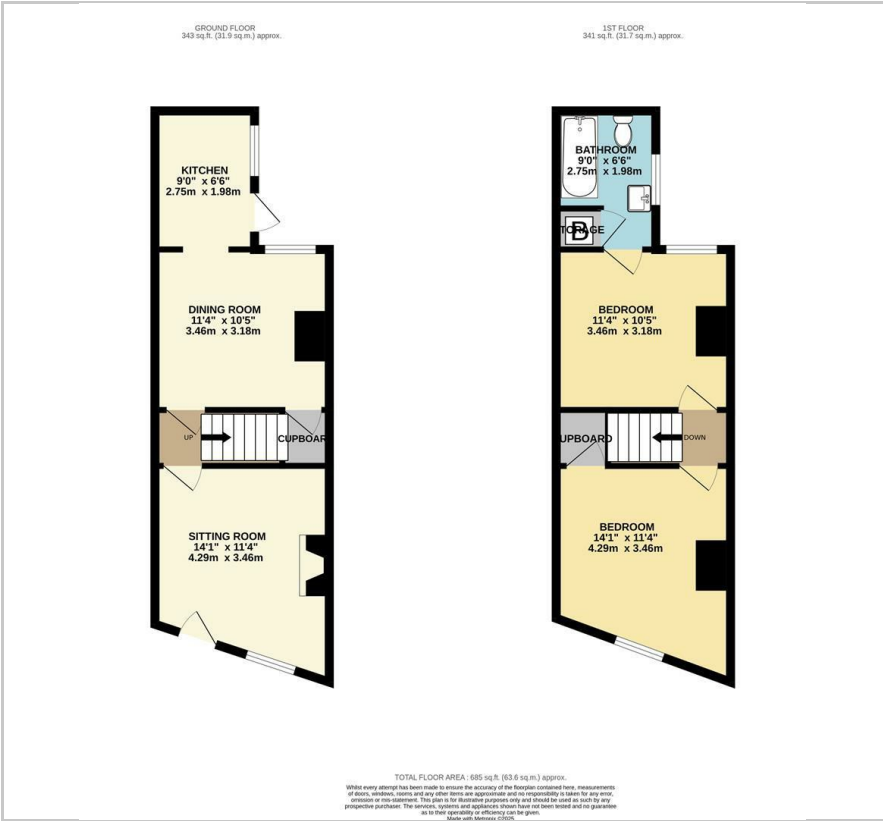
4 Sprowston Road

, Norwich, NR3 4QN

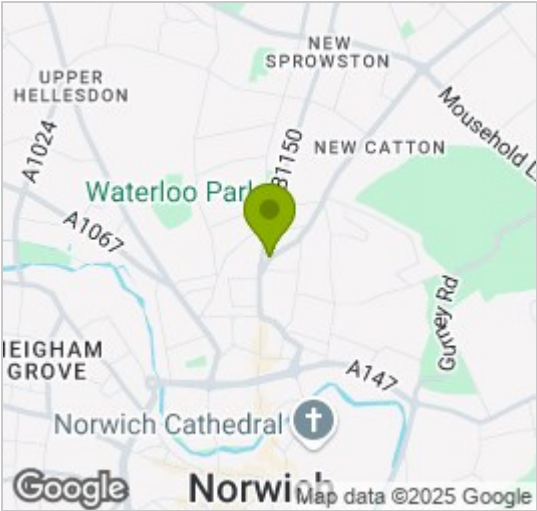
Offers in excess of £180,000



Floor Plan



Area Map



Energy Efficiency Graph



Viewing

Please contact our Ben Allman Estate Agents Office on 01603 555577 if you wish to arrange a viewing appointment for this property or require further information.

- Priced To Sell!
- End Of Terrace
- Upgraded Kitchen In 2022
- Two Double Bedrooms
- Walking Distance To City Centre
- No Onward Chain
- Modern Combi Boiler Installed Within The Past 5 Years
- Fully Double Glazed (Rear Windows Upgraded In 2022)
- Same Owners Since 1989
- EPC Rating - TBC

This charming Victorian end-terrace house is being offered with no onward chain, allowing for a quick sale for prospective buyers. Located just a short walk from local amenities and the city center, this property is full of character and has been lovingly maintained by the current owners since the 1980s.

On the ground floor, you'll find a cosy sitting room, a spacious dining room, and a modern kitchen, perfect for day-to-day living and entertaining. Upstairs, the home features two double bedrooms, including one with an en-suite bathroom.

The enclosed rear garden provides a private outdoor space, with side access for easy entry and exit.



These particulars, whilst believed to be accurate are set out as a general outline only for guidance and do not constitute any part of an offer or contract. Intending purchasers should not rely on them as statements of representation of fact, but must satisfy themselves by inspection or otherwise as to their accuracy. No person in this firms employment has the authority to make or give any representation or warranty in respect of the property.