

Ben Allman  
Estate & Letting Agents



96 Vale Green

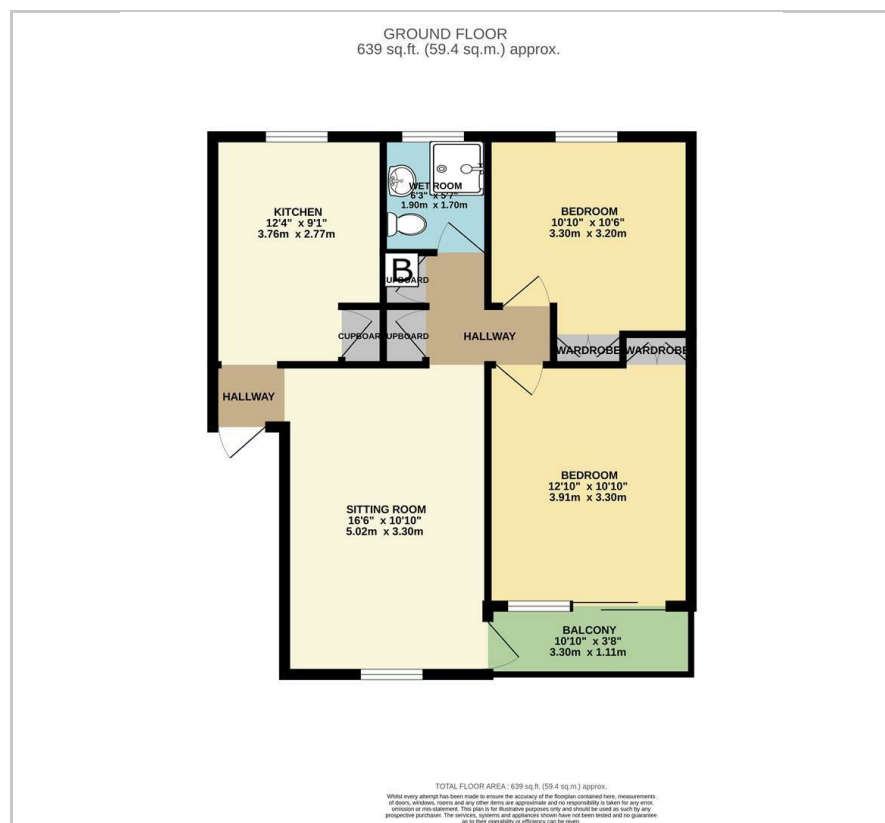
, Norwich, NR3 2EL

Offers in excess of £125,000





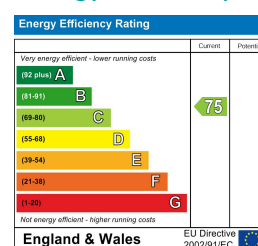
## Floor Plan



## Area Map



### Energy Efficiency Graph



## Viewing

Please contact our Ben Allman Estate Agents Office  
on 01603 555577 if you wish to arrange a viewing appointment  
for this property or require further information.

- First Floor Apartment
- Balcony
- Wet Room
- Lease Length 89 Years
- EPC Rating - C
- Two Double Bedrooms
- Generous Sitting Room
- S/C And G/R Approx. £500 Per Annum
- No Onward Chain

A spacious and well-presented first floor apartment offering two double bedrooms and a balcony.

Located within the popular NR3 postcode, this apartment is situated within walking distance of many local amenities and offers generous living accommodation including; large sitting room with balcony, kitchen/breakfast room, wet room and two double bedrooms. There is also a small brick built storage shed.



These particulars, whilst believed to be accurate are set out as a general outline only for guidance and do not constitute any part of an offer or contract. Intending purchasers should not rely on them as statements of representation of fact, but must satisfy themselves by inspection or otherwise as to their accuracy. No person in this firm's employment has the authority to make or give any representation or warranty in respect of the property.

2B Sprowston Road, Norwich, Norfolk, NR3 4QN  
Tel: 01603 555577 Email: [enquiries@baela.co.uk](mailto:enquiries@baela.co.uk) [www.baela.co.uk](http://www.baela.co.uk)