

Ben Allman
Estate & Letting Agents



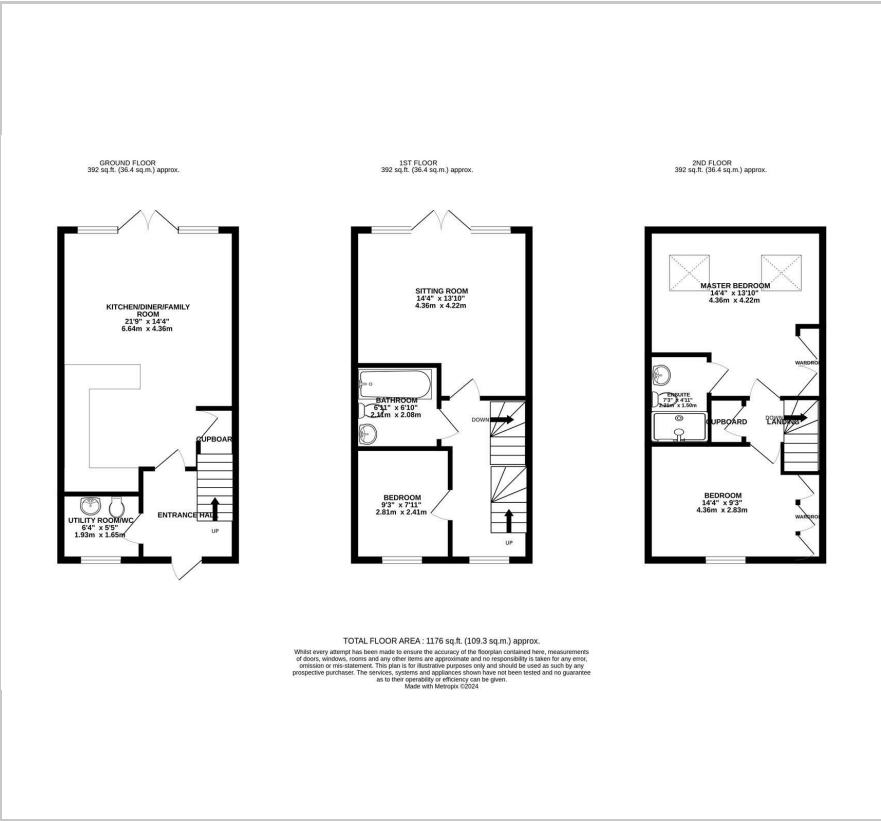
8 Rowan Way

, Cringleford, NR4 7PZ

Offers in excess of £335,000



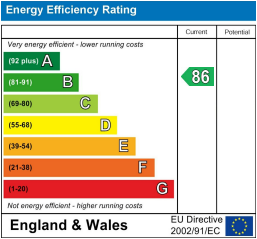
Floor Plan



Area Map



Energy Efficiency Graph



Viewing

Please contact our Ben Allman Estate Agents Office on 01603 555577 if you wish to arrange a viewing appointment for this property or require further information.

- Sold With No Onward Chain
- Open-Plan Kitchen/Dining/Family Room With Integrated Dishwasher and Fridge/Freezer
- First Floor Sitting Room With Juliet Balcony
- Ample Storage Cupboards
- Low Maintenance Landscaped Rear Garden
- Driveway And Carport For Three Vehicles
- Ground Floor WC/Utility Room
- Master Bedroom With En-Suite And Built-In Wardrobes
- EPC Rating - B
- Located On The Popular Roundhouse Park Development Within Walking Distance Of Local Shops, Parks, Schooling, Takeaways And Pubs



Built in 2017, this contemporary semi-detached townhouse has been excellently improved by the current owners, offering accommodation across three floors and a carport.

On the ground floor, the spacious kitchen/family room serves as the heart of the home, with a modern open-concept design, perfect for entertaining. A utility room with WC offers convenience and practicality, and there are patio doors leading out to a landscaped, low-maintenance garden. This inviting outdoor space features artificial grass, stylish decking, a storage shed and a raised vegetable bed.

The first floor provides a large, yet cosy sitting room with Juliet balcony, a sleek bathroom and a bedroom.

The second floor boasts a superb master suite, with velux windows, en-suite and built in wardrobes, with a further double bedroom across the hall, also complete with built-in wardrobes.



These particulars, whilst believed to be accurate are set out as a general outline only for guidance and do not constitute any part of an offer or contract. Intending purchasers should not rely on them as statements of representation of fact, but must satisfy themselves by inspection or otherwise as to their accuracy. No person in this firms employment has the authority to make or give any representation or warranty in respect of the property.