

Ben Allman
Estate & Letting Agents



13, Markham Tower Bowers Avenue

, Norwich, NR3 2PX

Guide price £110,000



2



1

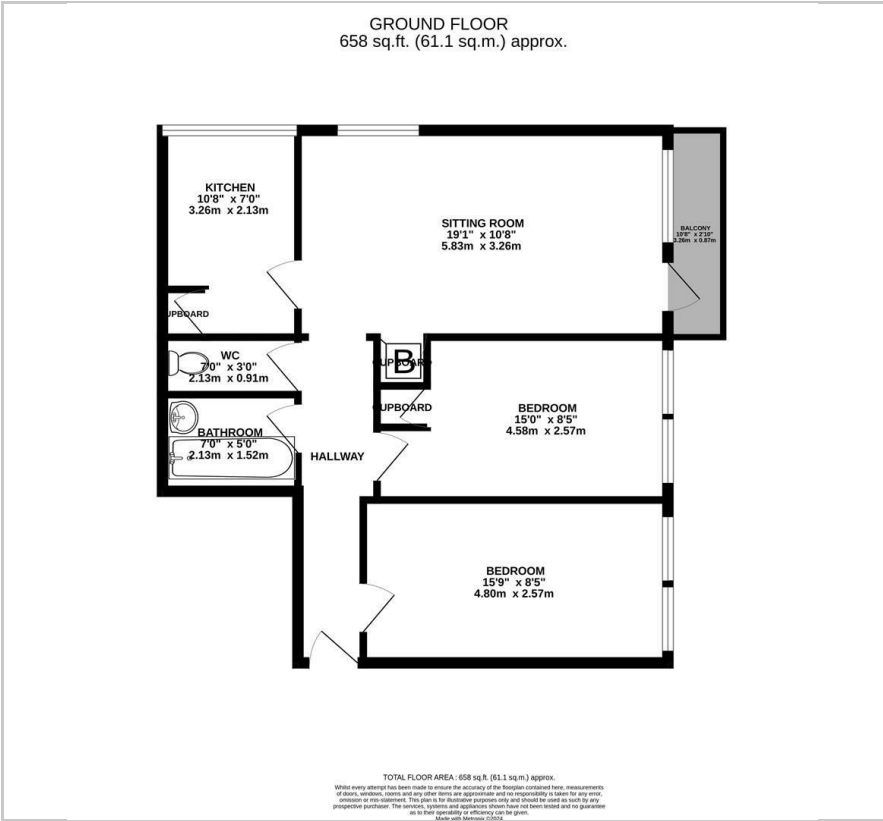


1



D

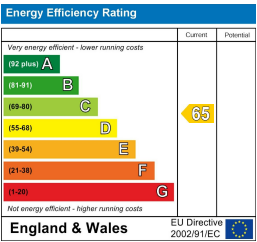
Floor Plan



Area Map



Energy Efficiency Graph



Viewing

Please contact our Ben Allman Estate Agents Office on 01603 555577 if you wish to arrange a viewing appointment for this property or require further information.

- Guide Price £110,000 - £120,000
- Heating Included In Service Charge Of £2329 Per Annum
- Lease Length Extended To 125 Years
- Private Balcony
- External Storage Shed
- Third Floor Apartment
- Ground Rent £10 Per Annum
- Two Double Bedrooms
- New Flooring
- Internal Store

Offered with no onward chain Two bedroom apartment located on the third floor with elevator access, private balcony and communal gardens. The property offers two generous bedrooms, kitchen, bathroom, separate WC and a large sitting room with private balcony. Heating is included within the service charge.



These particulars, whilst believed to be accurate are set out as a general outline only for guidance and do not constitute any part of an offer or contract. Intending purchasers should not rely on them as statements of representation of fact, but must satisfy themselves by inspection or otherwise as to their accuracy. No person in this firms employment has the authority to make or give any representation or warranty in respect of the property.