

Ben Allman
Estate & Letting Agents



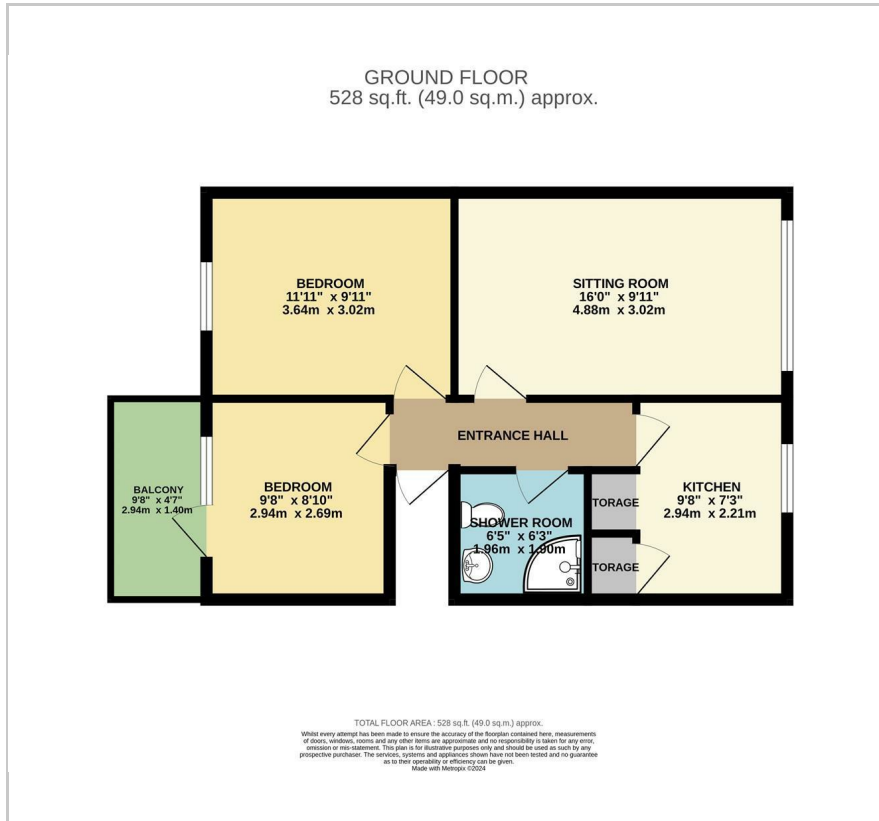
46 White House Court

, Norwich, NR3 3UF

Offers in excess of £132,500



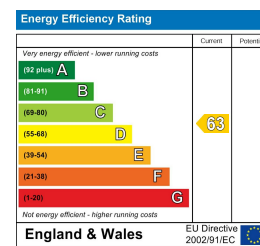
Floor Plan



Area Map



Energy Efficiency Graph



Viewing

Please contact our Ben Allman Estate Agents Office on 01603 555577 if you wish to arrange a viewing appointment for this property or require further information.

- No Onward Chain
- Two Bedrooms
- Communal Gardens
- Lease Length 946 Years Remaining
- Electric Central Heating
- First Floor Apartment
- South-Facing Balcony
- Service Charge and Ground Rent Approximately £93 Per Month
- Close To Local Amenities And Public Transport
- Garage En-Bloc



Offered with no onward chain is this well-presented 2 bedroom apartment situated on the first floor of this purpose built apartment complex. Complete with a single garage en-bloc.

Surrounded by well-tended communal gardens, the property benefits from two double bedrooms, a modern kitchen, shower room and large sitting room.



These particulars, whilst believed to be accurate are set out as a general outline only for guidance and do not constitute any part of an offer or contract. Intending purchasers should not rely on them as statements of representation of fact, but must satisfy themselves by inspection or otherwise as to their accuracy. No person in this firm's employment has the authority to make or give any representation or warranty in respect of the property.