

Ben Allman  
Estate & Letting Agents



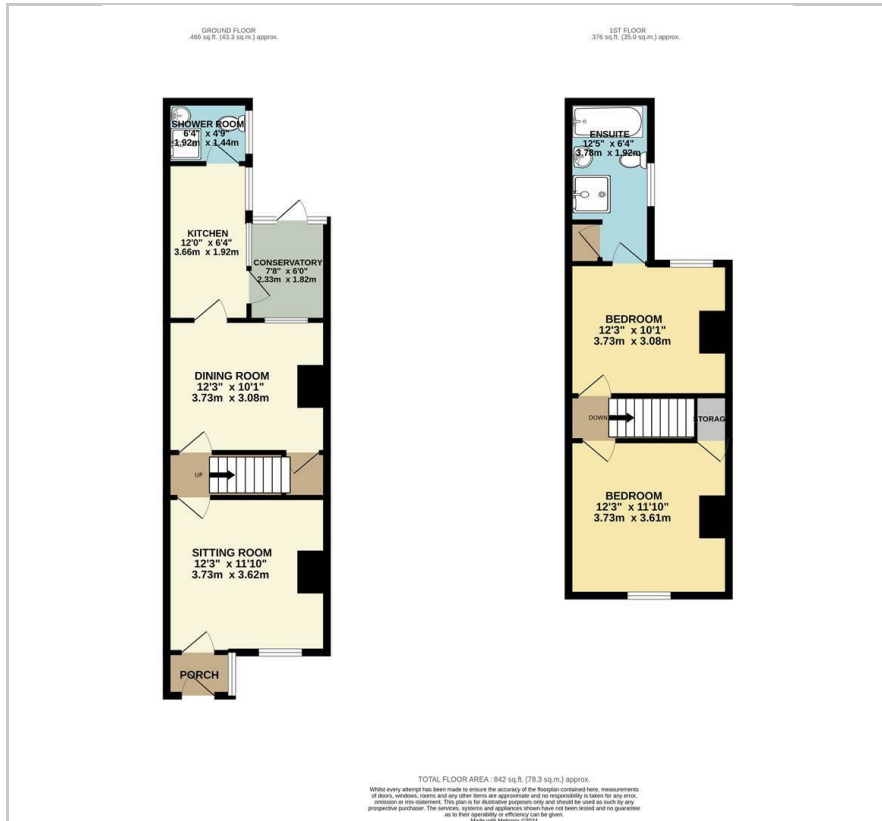
3 Hughenden Road

, Norwich, NR1 2PX

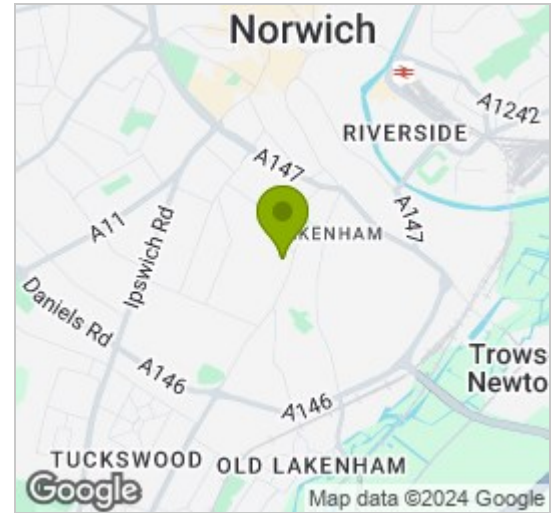
Guide price £230,000



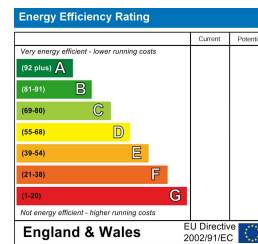
## Floor Plan



## Area Map



## Energy Efficiency Graph



## Viewing

Please contact our Ben Allman Estate Agents Office on 01603 555577 if you wish to arrange a viewing appointment for this property or require further information.

- No Onward Chain
- Garage With Power
- Two Bathrooms
- South Facing Rear Garden
- Porch Entrance
- Boiler Upgraded 3 Years Ago



Sold with no onward chain is this Victorian Terrace house, boasting a south facing and enclosed rear garden with garage.

The property benefits from a porch entrance, sitting room, dining room, 3.6m kitchen, bathroom and a conservatory to the ground floor. The first floor offers two double bedrooms and an en-suite 4-piece bathroom.

The current owners have made various improvements to the property over the past ten years, with the property mostly rented out to tenants during this time. The property is now vacant and will be sold with no onward chain.

These particulars, whilst believed to be accurate are set out as a general outline only for guidance and do not constitute any part of an offer or contract. Intending purchasers should not rely on them as statements of representation of fact, but must satisfy themselves by inspection or otherwise as to their accuracy. No person in this firm's employment has the authority to make or give any representation or warranty in respect of the property.