

Ben Allman  
Estate & Letting Agents



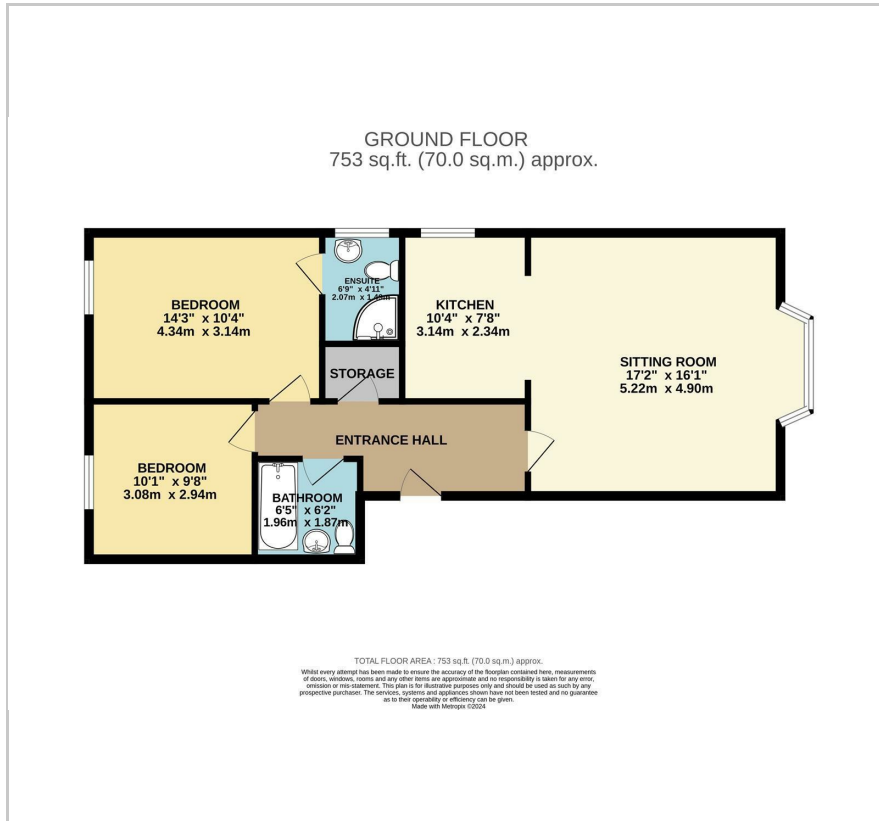
1D Harvey Lane

, Norwich, NR7 0BG

Guide price £230,000



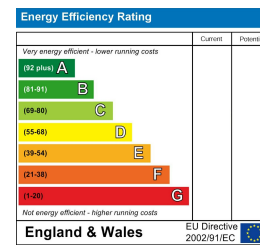
## Floor Plan



## Area Map



## Energy Efficiency Graph



## Viewing

Please contact our Ben Allman Estate Agents Office on 01603 555577 if you wish to arrange a viewing appointment for this property or require further information.

- Two Bedrooms
- Quality Finish Throughout
- First Floor Apartment
- Car Park
- No Onward Chain
- En-Suite
- Open - Plan Sitting Room/Kitchen



Beautiful two bedroom apartment in the popular suburb of Thorpe St Andrew.



These particulars, whilst believed to be accurate are set out as a general outline only for guidance and do not constitute any part of an offer or contract. Intending purchasers should not rely on them as statements of representation of fact, but must satisfy themselves by inspection or otherwise as to their accuracy. No person in this firm's employment has the authority to make or give any representation or warranty in respect of the property.