

Ben Allman
Estate & Letting Agents



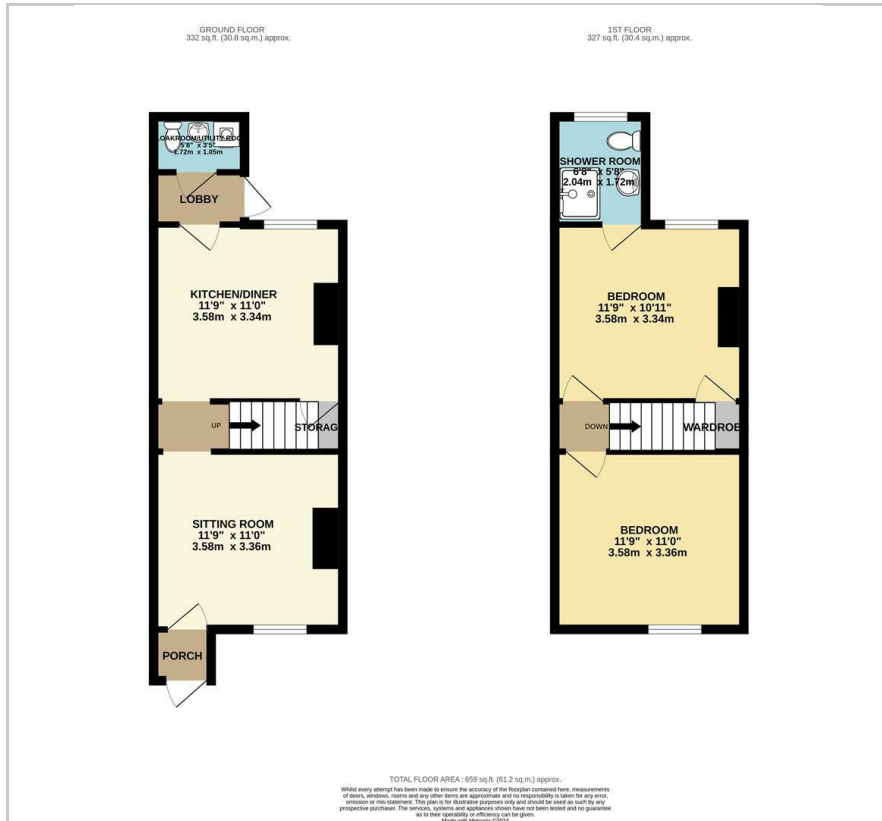
58 Spencer Street

Norwich, NR3 4PB

Offers in excess of £230,000



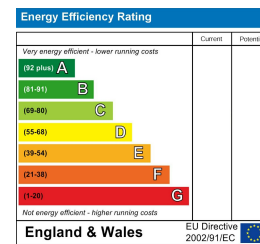
Floor Plan



Area Map



Energy Efficiency Graph



Viewing

Please contact our Ben Allman Estate Agents Office on 01603 555577 if you wish to arrange a viewing appointment for this property or require further information.

- Newly Fitted Kitchen
- Newly Fitted Shower Room And WC
- New Windows And Doors
- Porch Entrance Fitted
- Two Double Bedrooms
- Enclosed Rear Garden
- Gas Central Heating

A Victorian terraced house in the heart of NR3 which has undergone improvements by the current vendor.

The property benefits from a porch entrance, sitting room, newly fitted sage green 'shaker' kitchen with peninsula and a cupboard under the stairs with additional shelving and cabinets. The ground floor further benefits from a rear lobby with modern combi-boiler and newly fitted cloakroom/utility room with washer/dryer.

Upstairs there are 2 double bedrooms and a newly fitted shower room.

The non-bisected rear garden offers well-stocked flowerbeds, decking area for al-fresco dining, blue slate chipping seating area, 2 sheds and gated access to the rear alleyway.



These particulars, whilst believed to be accurate are set out as a general outline only for guidance and do not constitute any part of an offer or contract. Intending purchasers should not rely on them as statements of representation of fact, but must satisfy themselves by inspection or otherwise as to their accuracy. No person in this firm's employment has the authority to make or give any representation or warranty in respect of the property.