

Ben Allman
Estate & Letting Agents



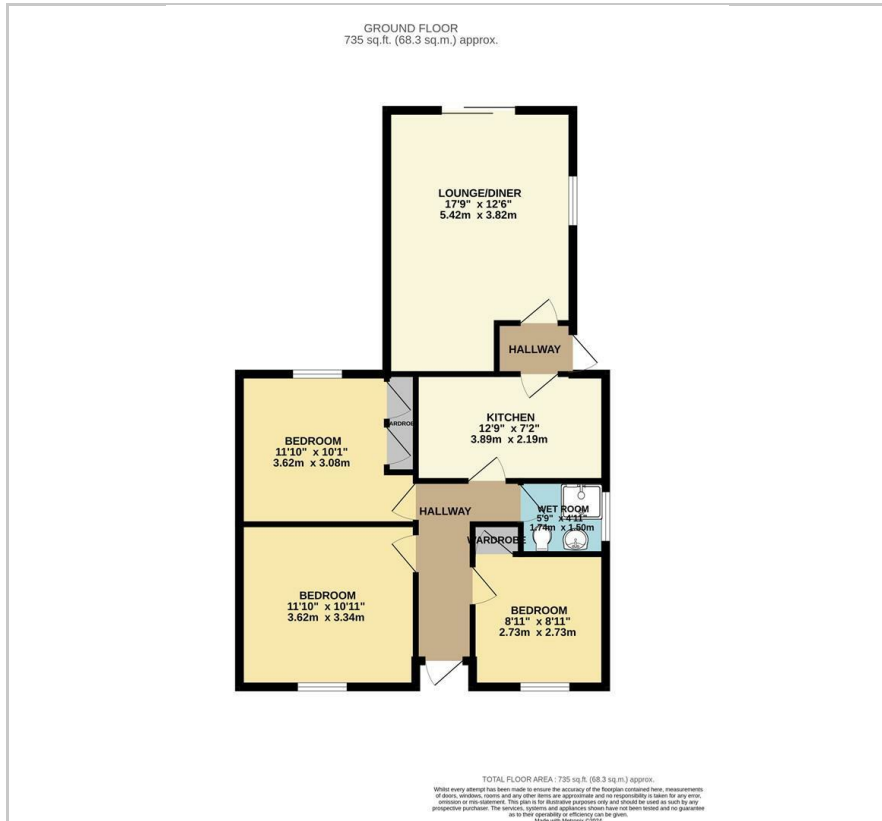
23 Blenheim Crescent

, Sprowston, NR7 8AW

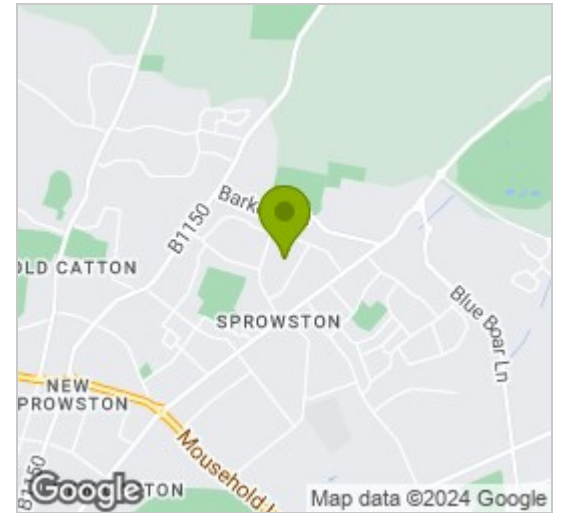
Guide price £275,000



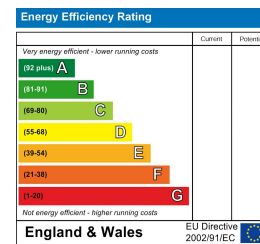
Floor Plan



Area Map



Energy Efficiency Graph



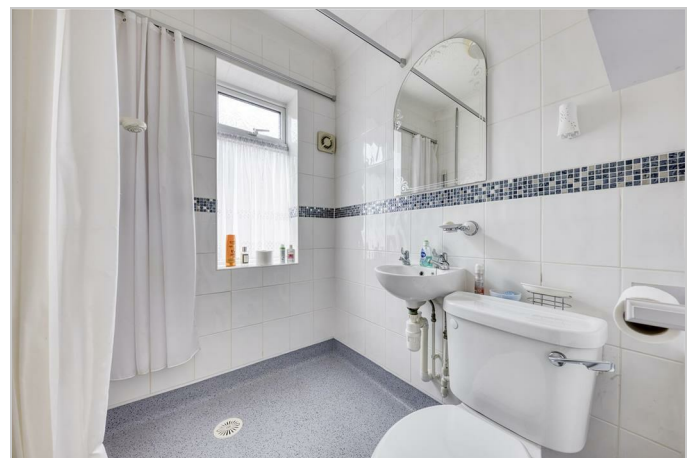
Viewing

Please contact our Ben Allman Estate Agents Office on 01603 555577 if you wish to arrange a viewing appointment for this property or require further information.

- No Onward Chain
- Large Rear Garden
- Three Double Bedrooms
- Wet Room
- Boiler Installed 4-5 Years Ago
- Driveway

No onward chain A 3 bedroom semi-detached bungalow with large rear garden and off-road parking.

Occupied by the same owner for 70 years, the property has been extended and now incorporates 3 double bedrooms, kitchen, wet-room and large sitting room/dining room with patio doors leading to the large and well-tended rear garden. The property benefits from double glazing throughout and gas central heating.



These particulars, whilst believed to be accurate are set out as a general outline only for guidance and do not constitute any part of an offer or contract. Intending purchasers should not rely on them as statements of representation of fact, but must satisfy themselves by inspection or otherwise as to their accuracy. No person in this firm's employment has the authority to make or give any representation or warranty in respect of the property.