

Ben Allman
Estate & Letting Agents



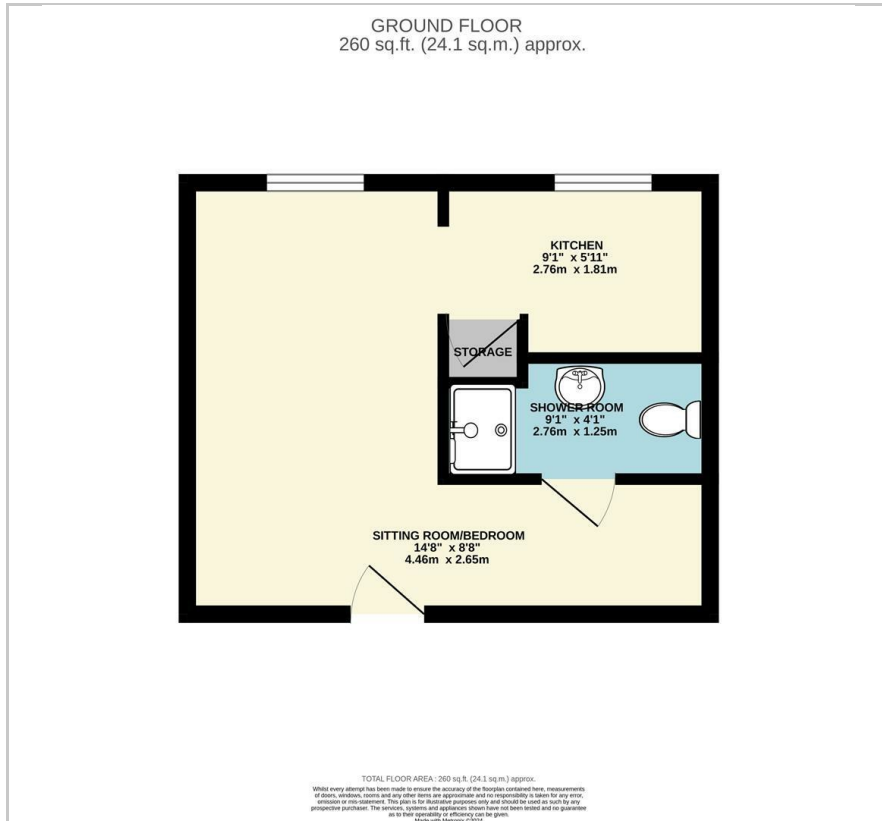
23 Gilman Road

, Norwich, NR3 4JB

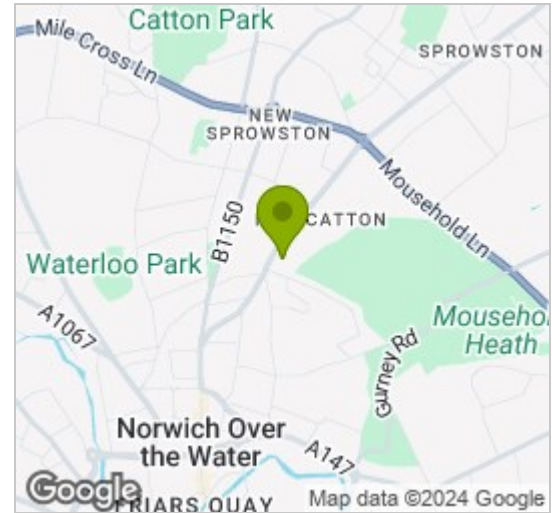
Offers in excess of £89,500



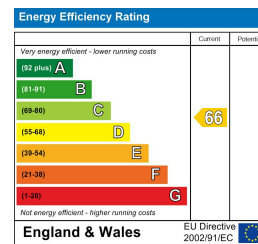
Floor Plan



Area Map



Energy Efficiency Graph



Viewing

Please contact our Ben Allman Estate Agents Office on 01603 555577 if you wish to arrange a viewing appointment for this property or require further information.

- Studio Apartment
- Allocated Parking Space
- Long Lease Length
- Double Glazed Throughout
- S/C And G/R £900PA
- Ground Floor
- Wonderful Setting Amongst Greenery
- White Goods Can Be Included
- EPC - D

Sold with no onward chain is this inviting studio apartment, located within walking distance of amenities, and surrounded by pleasant greenery. This ground floor apartment is in excellent order throughout and can be sold with fridge/freezer, washing machine, oven and bed if required. The property includes an allocated parking space.



These particulars, whilst believed to be accurate are set out as a general outline only for guidance and do not constitute any part of an offer or contract. Intending purchasers should not rely on them as statements of representation of fact, but must satisfy themselves by inspection or otherwise as to their accuracy. No person in this firm's employment has the authority to make or give any representation or warranty in respect of the property.