

Ben Allman
Estate & Letting Agents



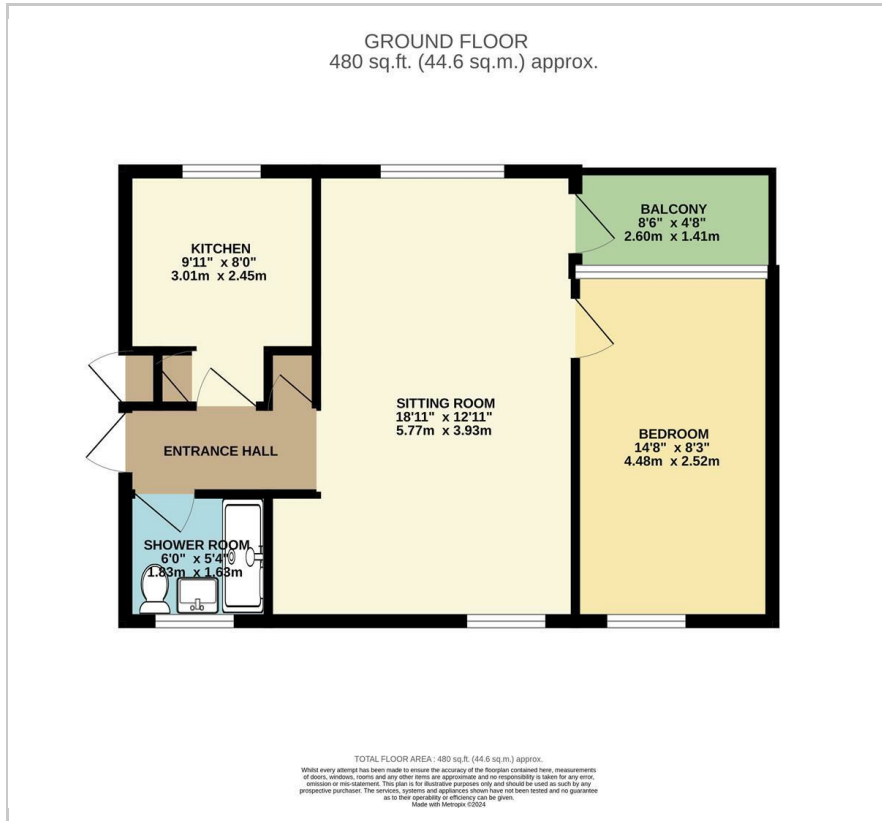
12 Ebenezer Place

, Norwich, NR3 3DQ

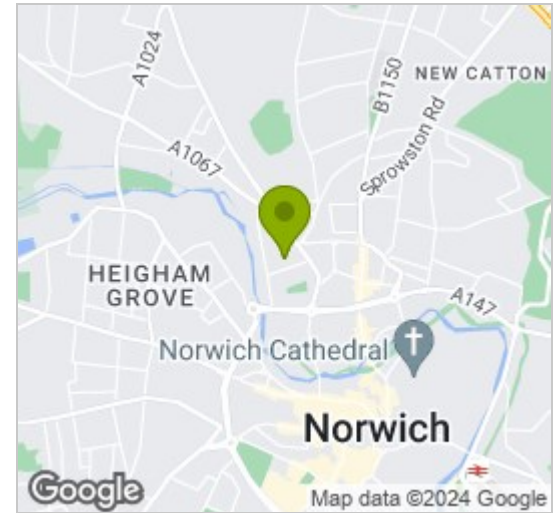
Offers in excess of £135,000



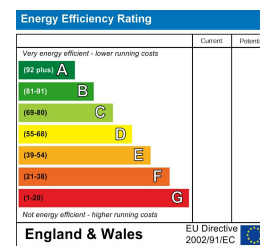
Floor Plan



Area Map



Energy Efficiency Graph

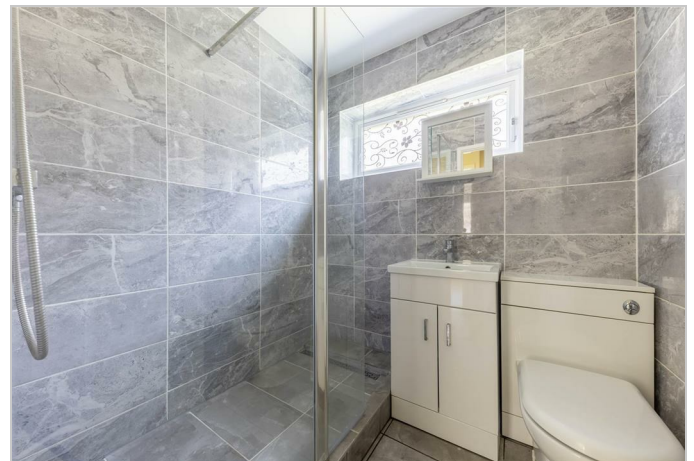


Viewing

Please contact our Ben Allman Estate Agents Office on 01603 555577 if you wish to arrange a viewing appointment for this property or require further information.

- Ground Floor Apartment
- Walking Distance To City Centre
- Overlooking Green
- New Flooring Throughout
- Balcony
- Car Park
- New Shower Room With Floor To Ceiling Tiles

Ground floor apartment with balcony, located within walking distance to the city centre. Nestled amongst a wonderful green setting sits this modernised ground floor apartment with deceptively spacious accommodation and a brick built storage shed.



These particulars, whilst believed to be accurate are set out as a general outline only for guidance and do not constitute any part of an offer or contract. Intending purchasers should not rely on them as statements of representation of fact, but must satisfy themselves by inspection or otherwise as to their accuracy. No person in this firm's employment has the authority to make or give any representation or warranty in respect of the property.