

Ben Allman
Estate & Letting Agents



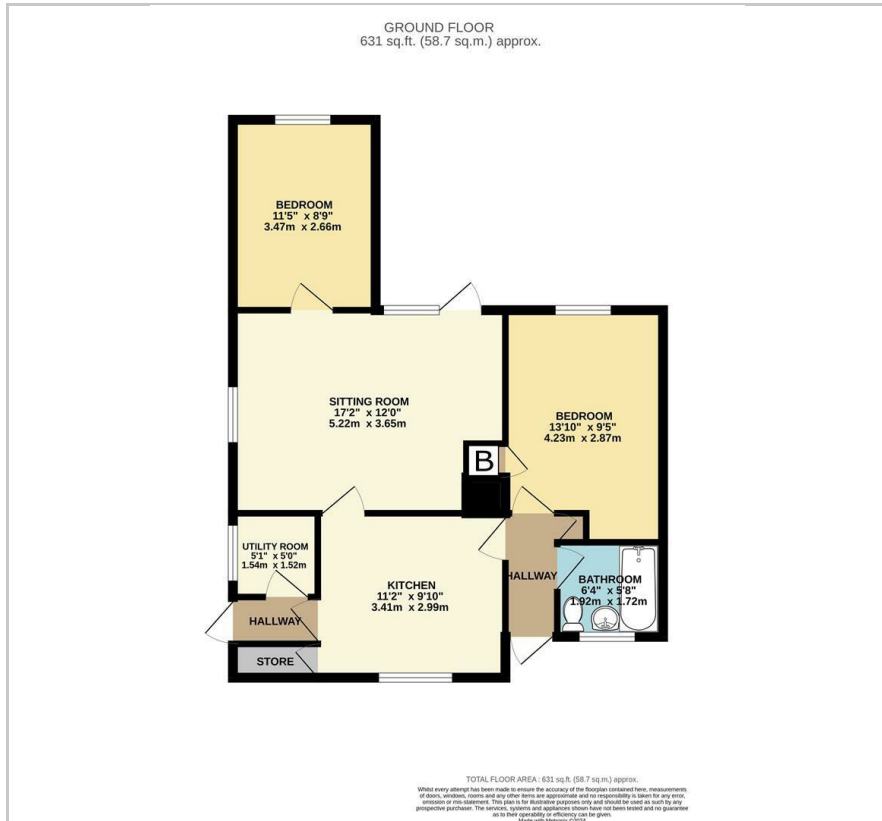
4 Margaret Crescent

, Thorpe St Andrew, NR7 0YD

Guide price £200,000



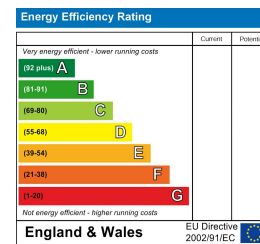
Floor Plan



Area Map



Energy Efficiency Graph



Viewing

Please contact our Ben Allman Estate Agents Office on 01603 555577 if you wish to arrange a viewing appointment for this property or require further information.

- Extended Semi-Detached ■ Two Double Bedrooms Bungalow
- Private And Enclosed Rear ■ Highly Desirable Location Garden
- Modern Combi Boiler ■ Double Glazed Throughout
- Gas Central Heating ■ No Onward Chain

Guide Price £200,000-£210,000. Offered with no onward chain is this extended 2 bedroom semi-detached bungalow in the highly desired area of Thorpe St Andrew.

The property benefits from two double bedrooms, a large sitting room, kitchen, bathroom, utility room and ample storage space. There is a private and enclosed rear garden and an additional garden area to the front.



These particulars, whilst believed to be accurate are set out as a general outline only for guidance and do not constitute any part of an offer or contract. Intending purchasers should not rely on them as statements of representation of fact, but must satisfy themselves by inspection or otherwise as to their accuracy. No person in this firm's employment has the authority to make or give any representation or warranty in respect of the property.