

Ben Allman  
Estate & Letting Agents



158 Knowsley Road

, Norwich, NR3 4PU

Guide price £269,995



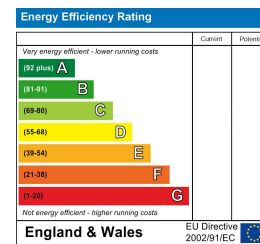
## Floor Plan



## Area Map



## Energy Efficiency Graph



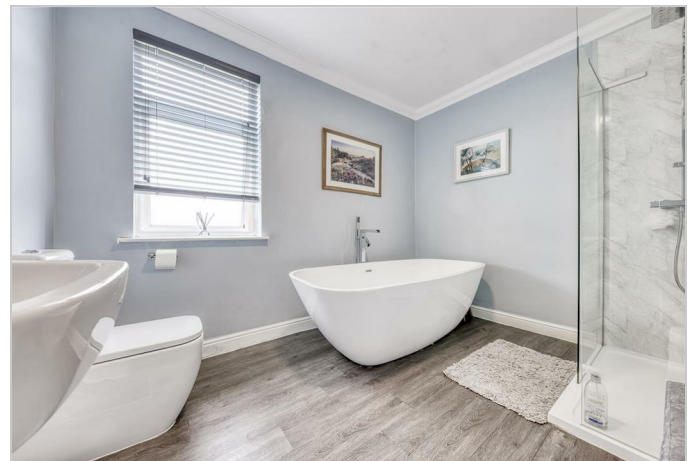
## Viewing

Please contact our Ben Allman Estate Agents Office on 01603 555577 if you wish to arrange a viewing appointment for this property or require further information.

- Over-The-Passage
- Two Generous Bedrooms
- 4-Piece En-Suite Bathroom
- Ground Floor Shower Room
- Renovated Throughout
- Walking Distance To Amenities
- Bi-Sected Rear Garden
- Gas Central Heating Throughout
- Double Glazed Throughout

This charming two-bedroom Victorian terrace has undergone excellent upgrades throughout, ensuring a blend of classic charm and modern convenience.

The property offers a cosy sitting room with feature fireplace, dining room, modern kitchen and ground floor shower room. Upstairs benefits from two very generous bedrooms, courtesy of the additional space above the passage, and a newly fitted 4-piece en-suite bathroom. The current owners have extensively upgraded the rear garden which also has power connected.



These particulars, whilst believed to be accurate are set out as a general outline only for guidance and do not constitute any part of an offer or contract. Intending purchasers should not rely on them as statements of representation of fact, but must satisfy themselves by inspection or otherwise as to their accuracy. No person in this firm's employment has the authority to make or give any representation or warranty in respect of the property.

2B Sprowston Road, Norwich, Norfolk, NR3 4QN  
 Tel: 01603 555577 Email: enquiries@baela.co.uk www.baela.co.uk