

Ben Allman
Estate & Letting Agents

Ben Allman
Estate & Letting Agents
FOR SALE
01603 555577
baela.co.uk



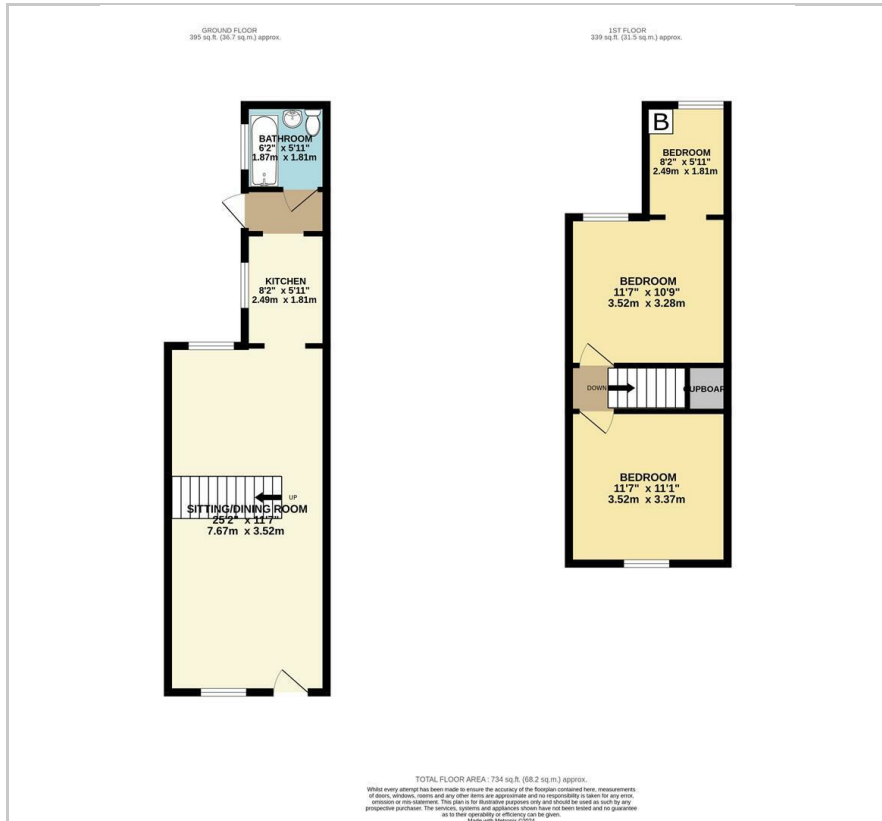
32 Stacy Road

, Norwich, NR3 1JN

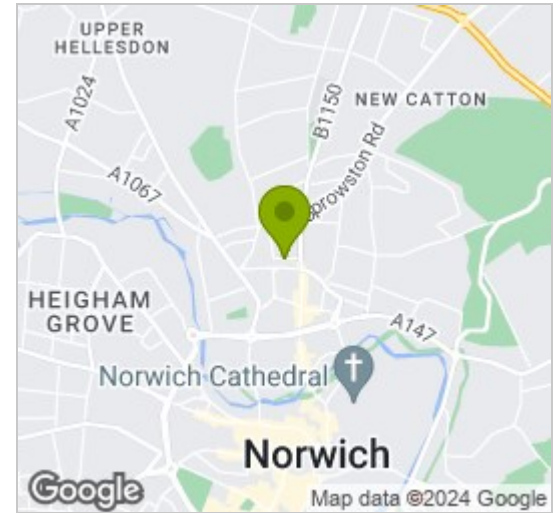
Guide price £230,000



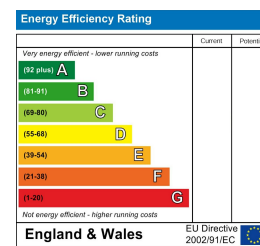
Floor Plan



Area Map



Energy Efficiency Graph



Viewing

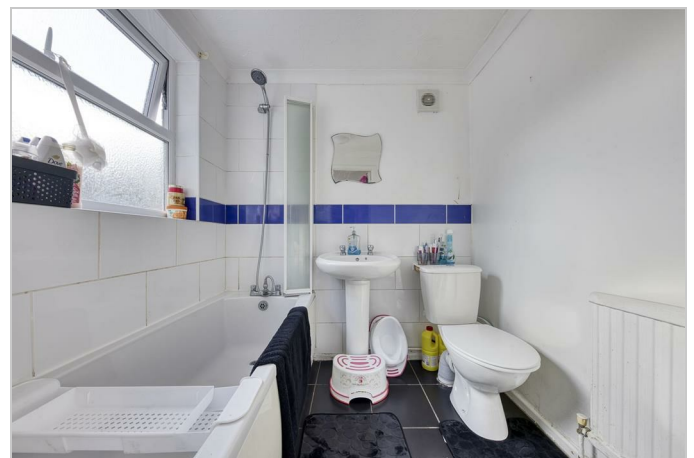
Please contact our Ben Allman Estate Agents Office on 01603 555577 if you wish to arrange a viewing appointment for this property or require further information.

- Walking Distance To City Centre
- No Onward Chain
- Open-Plan Layout
- Enclosed Front And Rear Gardens
- Gas Central Heating
- Double Glazed Throughout

Guide Price £230,000 - £240,000.. *No onward chain.* The property has been cleverly altered to maximise space and modern living, with a thoughtful open-plan layout that seamlessly integrates the sitting room and dining room. An open staircase floats between the two spaces.

On the ground floor, you'll find a well-appointed kitchen and bathroom, completing the functional layout of this charming home.

Outside, the property is complete with an enclosed rear garden. Paved for low maintenance.



These particulars, whilst believed to be accurate are set out as a general outline only for guidance and do not constitute any part of an offer or contract. Intending purchasers should not rely on them as statements of representation of fact, but must satisfy themselves by inspection or otherwise as to their accuracy. No person in this firm's employment has the authority to make or give any representation or warranty in respect of the property.