

Ben Allman
Estate & Letting Agents



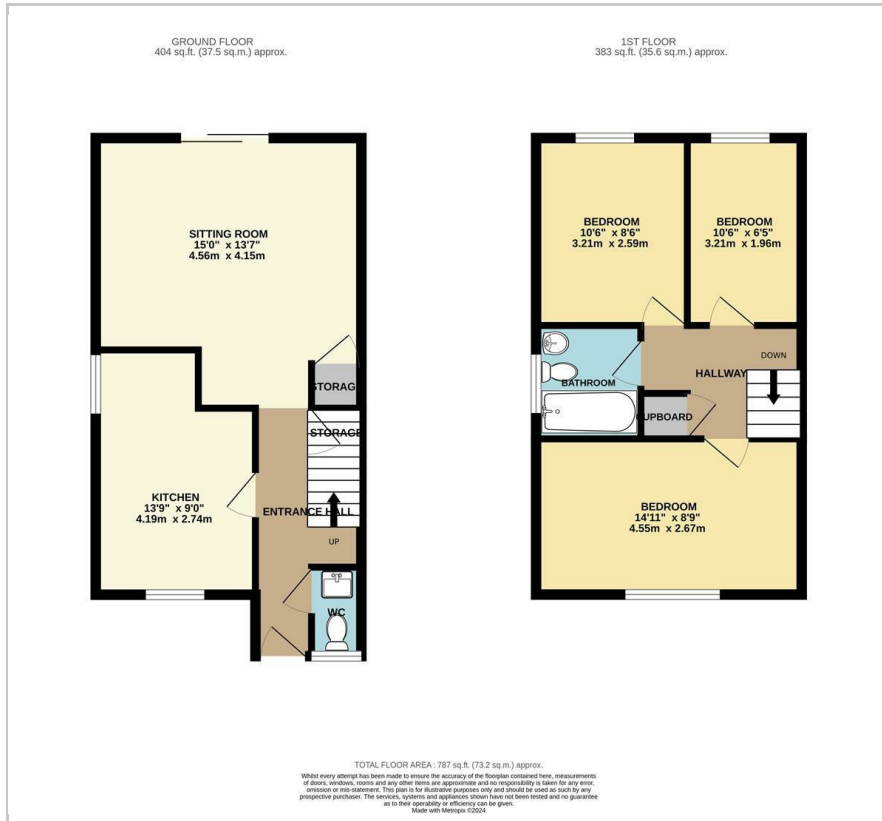
45 Chestnut Avenue

Spixworth, Norwich, NR10 3QD

Guide price £250,000



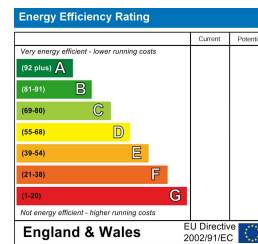
Floor Plan



Area Map



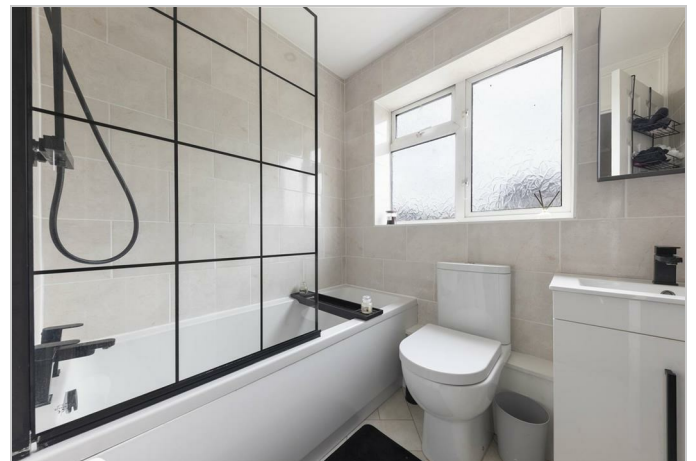
Energy Efficiency Graph



Viewing

Please contact our Ben Allman Estate Agents Office on 01603 555577 if you wish to arrange a viewing appointment for this property or require further information.

- Garage To Rear
- Renovated Throughout
- New Kitchen And Bathroom
- Downstairs WC
- Three Bedrooms
- Semi-Detached House
- Gas Central Heating
- EPC - C (72)



This exceptionally well-presented 3 bedroom semi-detached house stands as a testament to meticulous attention to detail and thoughtful improvement by its current owner. Boasting a host of upgrades, including a newly fitted kitchen and bathroom, this residence offers both style and comfort in abundance.

As you step inside, you're immediately struck by the pristine interior, where every detail has been carefully considered to create a welcoming and inviting atmosphere. The newly fitted kitchen exudes modern elegance, with sleek cabinetry, high-end appliances, and ample counter space.

The ground floor of the house features a spacious and light-filled living area, ideal for relaxation and entertaining guests. Large windows allow natural light to flood the space, creating a bright and airy ambiance.

The first floor provides three generously sized bedrooms and a newly fitted bathroom with its combination of modern luxury, functionality, and style.

Stepping outside, the manicured rear garden beckons with its tranquillity and charm. Predominantly laid-to-lawn, with a patio area perfect for al-fresco dining and entertaining. Completing the ensemble, a garage en-bloc offers convenient storage space for vehicles and belongings alike.

In summary, this exceptionally well-presented semi-detached house offers a harmonious blend of style, comfort, and functionality. With its meticulous improvements, manicured garden, and desirable features, it presents a wonderful opportunity to embrace modern living in a charming suburban setting.



These particulars, whilst believed to be accurate are set out as a general outline only for guidance and do not constitute any part of an offer or contract. Intending purchasers should not rely on them as statements of representation of fact, but must satisfy themselves by inspection or otherwise as to their accuracy. No person in this firm's employment has the authority to make or give any representation or warranty in respect of the property.

2B Spowston Road, Norwich, Norfolk, NR7 8JX
Tel: 01603 555577 Email: enquiries@baela.co.uk www.baela.co.uk