

Ben Allman
Estate & Letting Agents



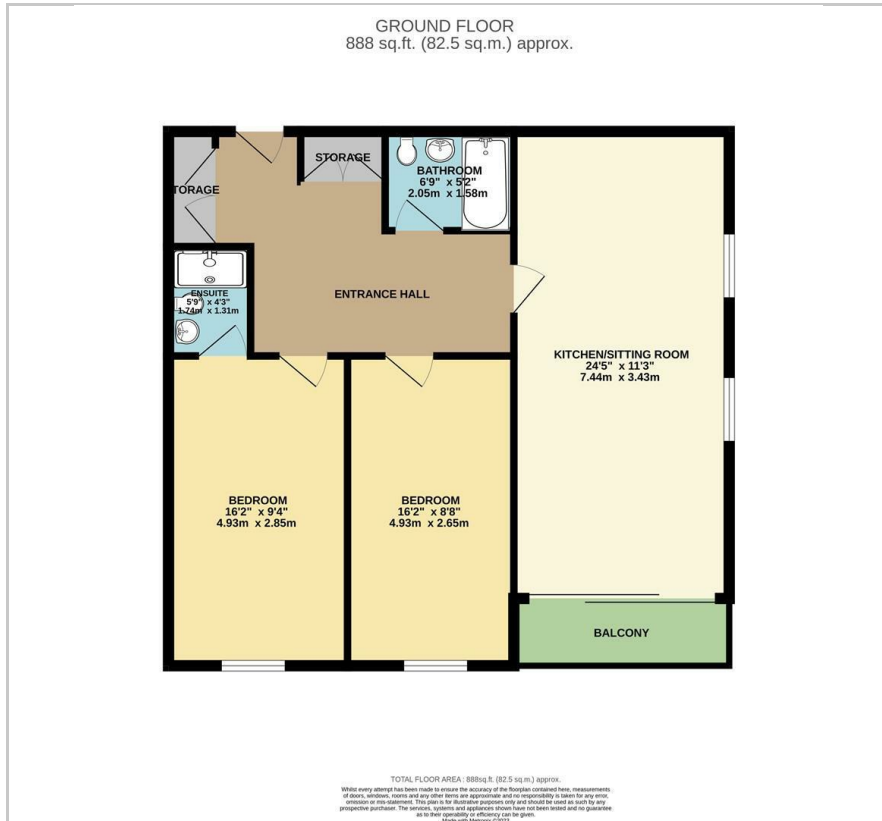
607 Richard Hawthorn House

Geoffrey Watling Way, Norwich, NR1 1GS

Guide price £279,950



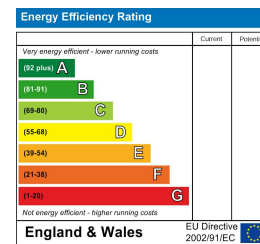
Floor Plan



Area Map



Energy Efficiency Graph

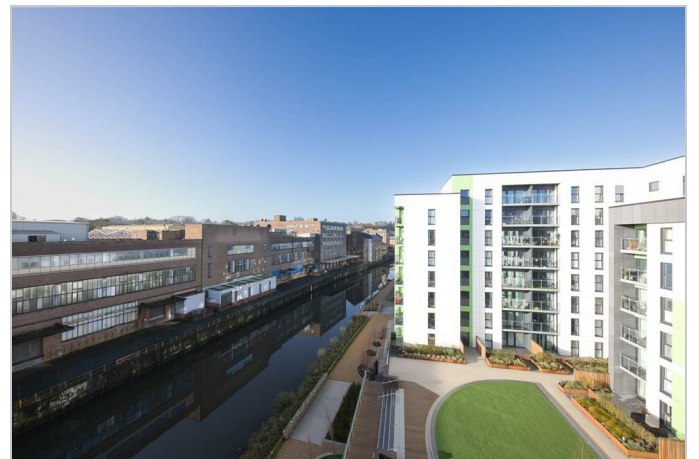


Viewing

Please contact our Ben Allman Estate Agents Office on 01603 555577 if you wish to arrange a viewing appointment for this property or require further information.

- Balcony With River Views
- En-Suite To Master Bedroom
- Walking Distance To City Centre
- Approximately £104PCM For Service Charge And Ground Rent
- Two Double Bedrooms with River Views
- Built in 2021 With A Lease Length of 999 Years
- Car Parking Space Available (£75PCM)
- Manicured Communal Gardens

An exceptionally well-presented 6th floor riverside apartment benefitting from river views



These particulars, whilst believed to be accurate are set out as a general outline only for guidance and do not constitute any part of an offer or contract. Intending purchasers should not rely on them as statements of representation of fact, but must satisfy themselves by inspection or otherwise as to their accuracy. No person in this firm's employment has the authority to make or give any representation or warranty in respect of the property.