

Ben Allman  
Estate & Letting Agents



24 Prospect Drive

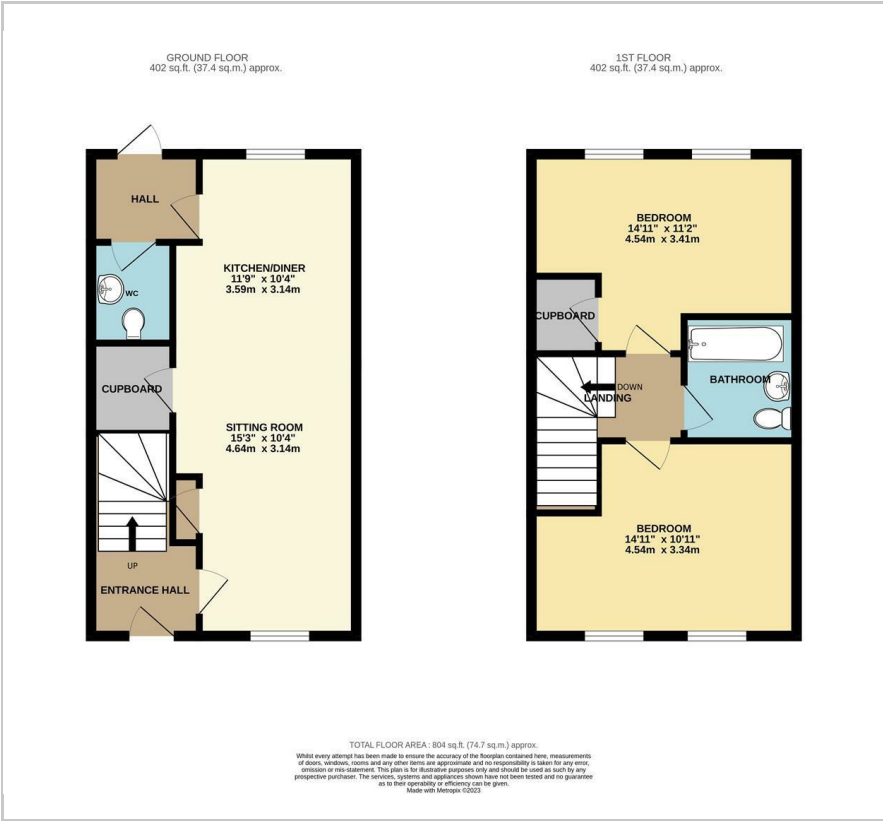
Aylsham, Norwich, NR11 6FY

Guide price £195,000





Floor Plan



Area Map



Energy Efficiency Graph



Viewing

Please contact our Ben Allman Estate Agents Office on 01603 555577 if you wish to arrange a viewing appointment for this property or require further information.

- Immaculate Mid-Terraced House
- Two Parking Spaces
- New Bathroom Suite
- New Flooring Throughout
- Two Double Bedrooms
- Enclosed Rear Garden
- Discounted Marketing Sale At 80% Market Value



These particulars, whilst believed to be accurate are set out as a general outline only for guidance and do not constitute any part of an offer or contract. Intending purchasers should not rely on them as statements of representation of fact, but must satisfy themselves by inspection or otherwise as to their accuracy. No person in this firm's employment has the authority to make or give any representation or warranty in respect of the property.