

W&B



8 Oakdale Road
Herne Bay, CT6 6AH
£1,125 Per month



8 Oakdale Road, Herne Bay, CT6 6AH

Woodward & Bishopp are delighted to offer this first floor flat within walking distance of the town, seafront and mainline station. Having been modernised internally, the accommodation comprises two double bedrooms, generous lounge, contemporary kitchen and shower room, Available from mid April, interested applicants should earn in excess of £33,000.



Communal Entrance Hall

Landing

Lounge
17'4 x 15'10 (5.28m x 4.83m)

Kitchen
7'4 x 5'10 (2.24m x 1.78m)

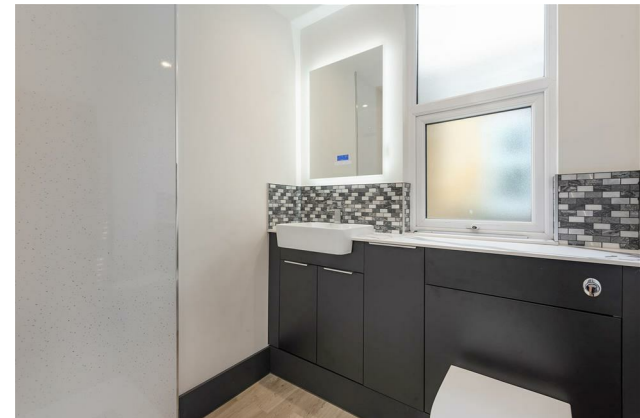
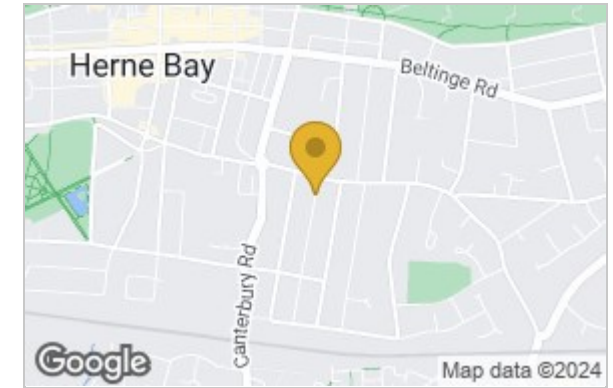
Bedroom One
13'4 x 11'4 (4.06m x 3.45m)

Bedroom Two
11'10 x 11'1 (3.61m x 3.38m)

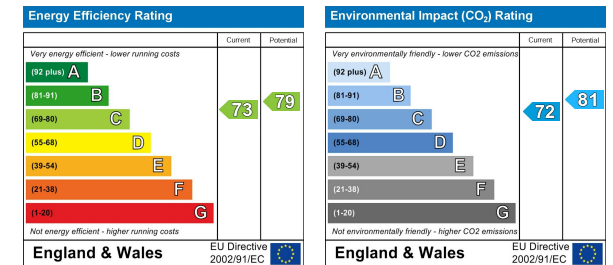
Shower Room



Area Map



Energy Efficiency Graph



These particulars, whilst believed to be accurate are set out as a general outline only for guidance and do not constitute any part of an offer or contract. Intending purchasers should not rely on them as statements of representation of fact, but must satisfy themselves by inspection or otherwise as to their accuracy. No person in this firm's employment has the authority to make or give any representation or warranty in respect of the property.

126 High Street, Herne Bay, Kent, CT6 5JY

Tel: 01227 583700 Email: lettings@woodwardandbishopp.co.uk Website: www.woodwardandbishopp.co.uk