

W&B



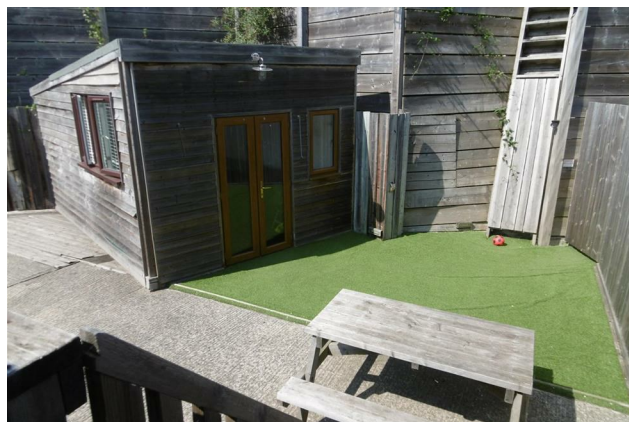
2 Shalmsford Bridge
Canterbury, CT4 8AF
£2,200 Per month



2 Shalmsford Bridge, Chilham, Canterbury, CT4 8AF

* BILLS INCLUDED IN THE RENT *

Woodward&Bishopp are delighted to offer this beautifully presented furnished detached family home situated in a stunning quiet location behind electric gates. Accommodation comprises: Open-plan lounge/ kitchen diner, leading onto Two double Bedrooms & One single Bedroom and bathroom with roll top bath and shower. Outside you will find a decking area off the kitchen overlooking amazing countryside views. Ample off road parking and rear garden, perfect for a professional/couple/small family. Min annual income £60,000. Includes all bills.



Lounge/Kitchen Diner
62'4"19'8" x 45'11"3'3" (19'06 x 14'01)

Bathroom

Bedroom One
29'6"19'8" x 36'1"29'6" (9'06 x 11'09)

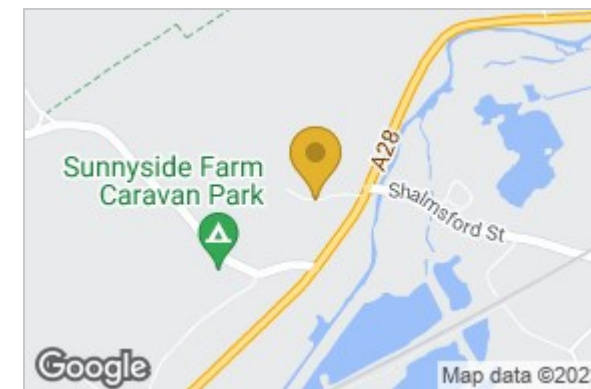
Bedroom Two
29'6"22'11" x 36'1"29'6" (9'07 x 11'09)

Bedroom Three
22'11"36'1" x 19'8"29'6" (7'11 x 6'09)

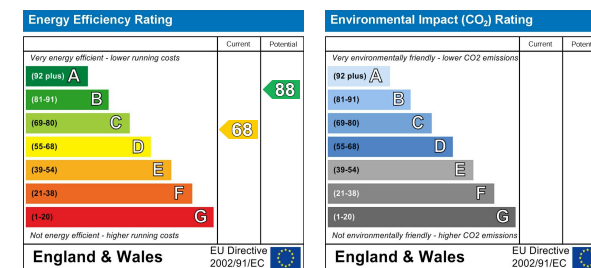
Outside Garden Area



Area Map



Energy Efficiency Graph



These particulars, whilst believed to be accurate are set out as a general outline only for guidance and do not constitute any part of an offer or contract. Intending purchasers should not rely on them as statements of representation of fact, but must satisfy themselves by inspection or otherwise as to their accuracy. No person in this firm's employment has the authority to make or give any representation or warranty in respect of the property.

126 High Street, Herne Bay, Kent, CT6 5JY

Tel: 01227 583700 Email: lettings@woodwardandbishopp.co.uk Website: www.woodwardandbishopp.co.uk