

emma's

P R O P E R T I E S



6 Reliant Close, Castle Bromwich, B36 9NG

Offers in excess of £220,000



Reliant Close, Castle Bromwich – Situated in a quiet cul-de-sac

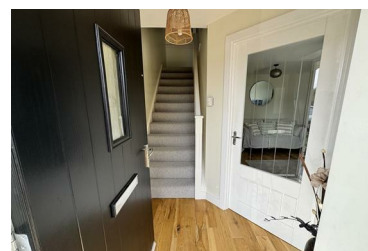
Chain Free!

A beautifully presented two-bedroom semi-detached home, perfect for first-time buyers or those looking to downsize. This move-in-ready property is located within walking distance of local shops and offers a stylish and energy-efficient living space.

Property Highlights:

Well-maintained throughout
Spacious family lounge providing a comfortable living area
Downstairs WC for added convenience
Contemporary fitted kitchen with dining space and ample storage

- Two Well-sized Bedrooms
- Fitted kitchen with dining space
- Solar water heating panel to reduce energy costs
- Rain water harvesting system
- Modern and well maintained throughout



emma's
P R O P E R T I E S