

# emma's

P R O P E R T I E S



## 51 Dunkley Crescent, Birmingham, B37 5FE

Offers in the region of £230,000



Welcome to 51 Dunkley Crescent, a beautifully maintained three-bedroom terraced home situated in the desirable area of Chelmsley Wood, Birmingham. Ideal for families and first-time buyers, this property combines modern living spaces with a convenient location.

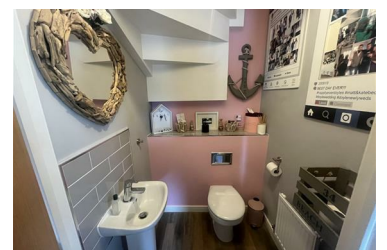
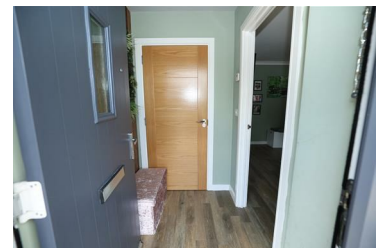
#### Location:

Situated in a convenient residential location, the property is close to local amenities including shops, primary and secondary schools, and offers excellent travel links to Solihull, Birmingham City Centre, and the M6 & M42 motorways.

#### Key Features:

Entrance Hall: Welcoming entrance hall with access to the guest W.C.  
Kitchen Diner: Modern fitted kitchen with integrated appliances and space for a dining table.  
Spacious Living area.

- Three Bedrooms
- Ensuite
- Beautifully Presented
- Two Allocated Parking Spaces
- Guest W.C



emma's  
P R O P E R T I E S