

emma's

P R O P E R T I E S



55 Dunkley Crescent, Birmingham, B37 5FE
Offers in the region of £220,000



Emma's is please to offer this well presented, three bedroom end terraced property for sale in Chelmsley Wood B37

The property in Brief:

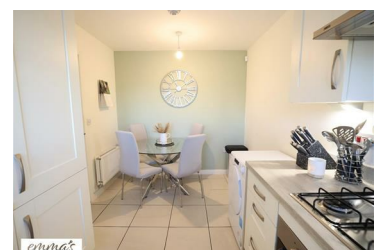
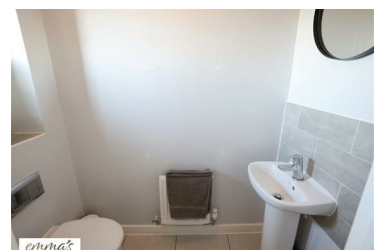
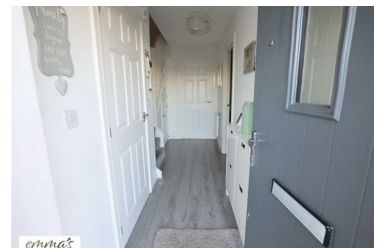
Entrance hall, Guest W.C, Modern fitted integrated kitchen with space for a dining table and a spacious lounge with French doors giving access to the rear garden.

Situated in a convenient residential location and having access to local amenities such as; shops, Primary and Secondary schools and offers good travel links to Solihull, Birmingham City Centre and the M6 & M42.

The property also benefits from three allocated parking spaces, Gas Central Heating and double Glazing throughout.

Have a property to sell or let? Contact Emma's properties for a free Valuation.

- Well Presented Throughout
- Three Bedrooms
- Great Location
- Three Allocated Parking Spaces
- Modern Intergrated Kitchen



emma's
P R O P E R T I E S