

emma's

P R O P E R T I E S



14 School Drive, Birmingham, B34 7NR

Offers in the region of £270,000



Three story town house for sale B34

This modern town house is situated in the sought after location of Shard End and located on School Drive B34

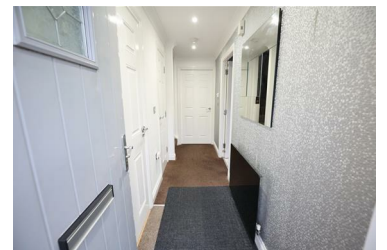
In Brief, Small front garden with off road parking and a pathway to front door. Entrance hall, Guest W.C, Modern fitted kitchen and a spacious living/dining area with French doors to the rear garden.

First Floor, Two double bedrooms and a family bathroom including; bath with over shower, fitted cabinet handwash basin towel radiator and W.C.

Second Floor, Master bedroom suite complete with dressing area and en-suite shower room.

To the rear is a low maintenance garden. mainly laid to lawn and a garage is situated to the rear of the property.

- Off Road Parking & A Garage
- Modern Fitted Kitchen
- A Must View!
- Spacious
- Three Double Bedrooms



emma's
P R O P E R T I E S