



jordan fishwick

Wood Street New Mills High Peak



Wood Street New Mills High Peak SK22 3HN

Guide Price £195,000



The Property

Situated in an ideal location for both New Mills railway stations and the town centre itself, is this two bedroom mid terraced property on Wood Street offered with NO ONWARD CHAIN. The property comprises: an entrance hallway which leads into the expansive living/dining area with two fireplaces, the kitchen space offers ample countertop area, provides access to the understairs storage and rear door to the enclosed garden space. To the first floor there are two well sized double bedrooms and the large three piece bathroom. The property would be well suited to working professionals looking for excellent commuter links due to its location as well as those looking for a property in a condition prime for updating. Viewing essential to appreciate the potential.



- NO CHAIN
- Two Double Bedrooms
- Open Plan Living/Dining Area
- Large Three Piece Bathroom
- Double Glazing Throughout
- Excellent Commuter Links
- Mid Terrace
- Prime For Updating

Postcode

SK22 3HN

EPC Rating

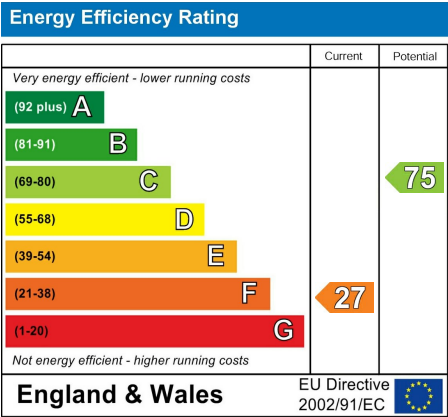
F

Local Authority

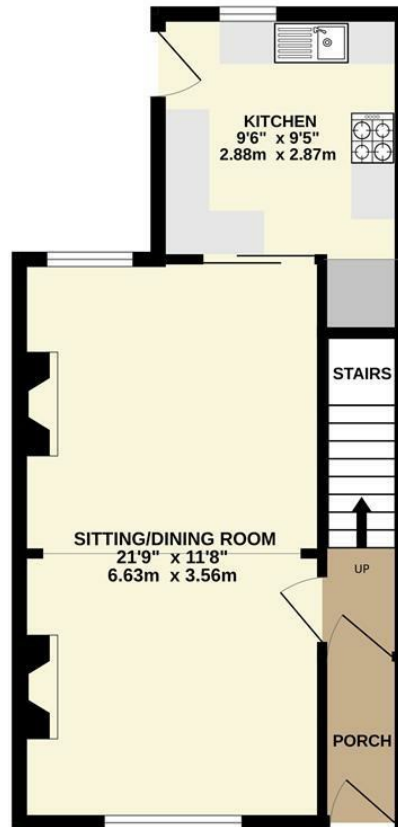
High Peak

Council Tax

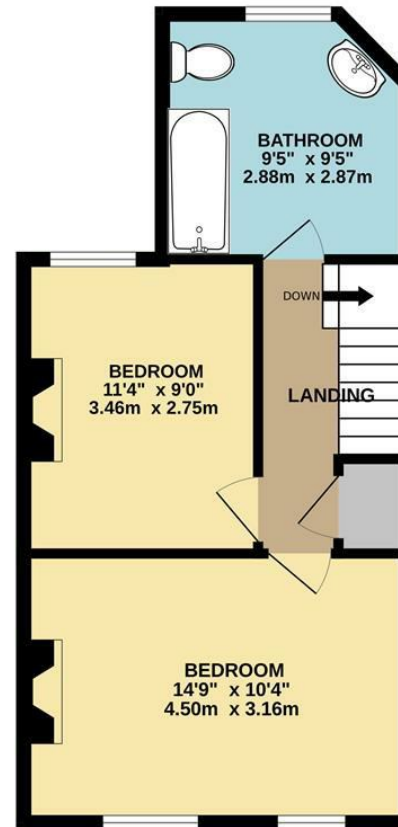
B



GROUND FLOOR
400 sq.ft. (37.2 sq.m.) approx.



1ST FLOOR
397 sq.ft. (36.9 sq.m.) approx.



TOTAL FLOOR AREA: 797 sq.ft. (74.0 sq.m.) approx.

Whilst every attempt has been made to ensure the accuracy of the floorplan contained here, measurements of doors, windows, rooms and any other items are approximate and no responsibility is taken for any error, omission or mis-statement. This plan is for illustrative purposes only and should be used as such by any prospective purchaser. The services, systems and appliances shown have not been tested and no guarantee as to their operability or efficiency can be given.
Made with Metropix ©2025



These particulars are believed to be accurate but they are not guaranteed and do not form a contract. Neither Jordan Fishwick nor the vendor or lessor accept any responsibility in respect of these particulars, which are not intended to be statements or representations of fact and any intending purchaser or lessee must satisfy himself by inspection or otherwise as to the correctness of each of the statements contained in these particulars. Any floorplans on this brochure are for illustrative purposes only and are not necessarily to scale.

Offices at: Chorlton, Didsbury, Disley, Hale, Glossop, Macclesfield, Manchester Deansgate, Manchester Whitworth Street, New Mills, Sale, Wilmslow and Withington

14 Market St, Disley, Cheshire, Stockport SK12 2AA

01663 767878

disley@jordanfishwick.co.uk

www.jordanfishwick.co.uk