



jordan fishwick

North Road Hayfield High Peak



North Road Hayfield High Peak SK22 2HW

£275,000



The Property

*** NO ONWARD CHAIN *** Set in the charming village of Hayfield, this well-appointed and extended three-bedroom terraced house on North Road presents an ideal opportunity for those seeking a tranquil retreat. Set back from the road, the property is framed by a delightful front garden, providing a sense of privacy and serenity. Upon entering, you will find two spacious reception rooms that offer versatile living spaces, perfect for both relaxation and entertaining. The layout is designed to maximise comfort and functionality, making it an inviting home for families or professionals alike. The property also features a dedicated office space, catering to the needs of those who work from home or require a quiet area for study. The three bedrooms are well-proportioned, providing ample space for furnishings. The bathroom is conveniently located, ensuring ease of access for all residents. Hayfield is renowned for its picturesque surroundings and community spirit, making it a desirable location for those who appreciate the beauty of the High Peak. With local amenities and scenic walks just a stone's throw away, this property offers not only a home but a lifestyle.



- Three Bedroom Terrace Property
- Loft Conversion
- Office Space
- Front & Rear Garden
- Open Plan Living
- Two Reception Rooms
- Double Glazed Windows / Gas Central Heating
- Walking Distance to Hayfield Village

Postcode

SK22 2HW

EPC Rating


D

Local Authority

High Peak

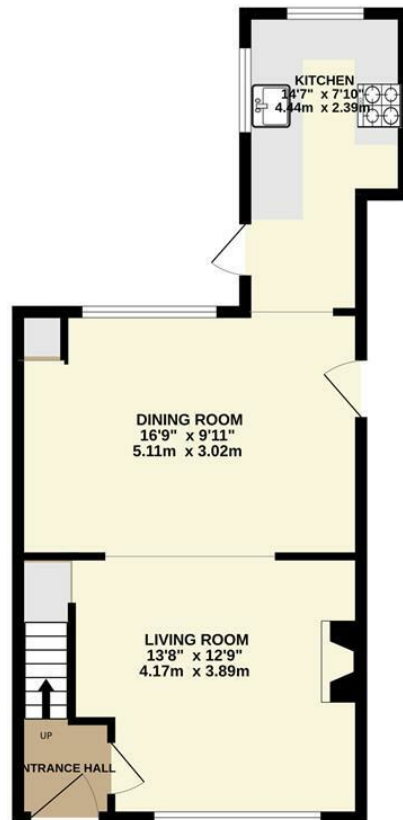
Council Tax

B

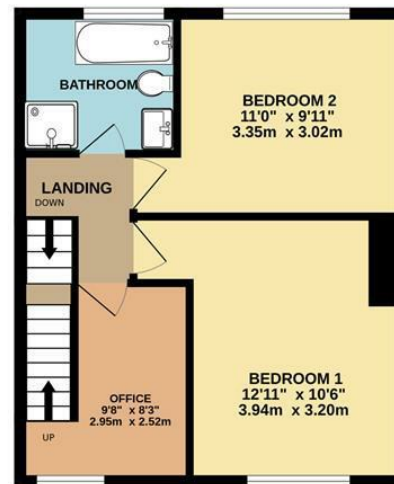
Energy Efficiency Rating		
	Current	Potential
Very energy efficient - lower running costs		
(92 plus) A		
(81-91) B		
(69-80) C		77
(55-68) D	64	
(39-54) E		
(21-38) F		
(1-20) G		
Not energy efficient - higher running costs		
England & Wales	EU Directive 2002/91/EC 	



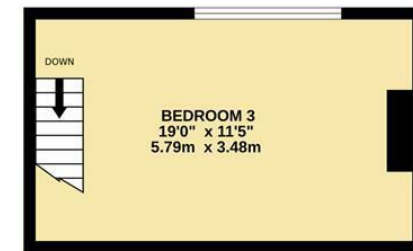
GROUND FLOOR



1ST FLOOR



2ND FLOOR



Whilst every attempt has been made to ensure the accuracy of the floorplan contained here, measurements of doors, windows, rooms and any other items are approximate and no responsibility is taken for any error, omission or mis-statement. This plan is for illustrative purposes only and should be used as such by any prospective purchaser. The services, systems and appliances shown have not been tested and no guarantee as to their operability or efficiency can be given.
Made with Metropix ©2025



These particulars are believed to be accurate but they are not guaranteed and do not form a contract. Neither Jordan Fishwick nor the vendor or lessor accept any responsibility in respect of these particulars, which are not intended to be statements or representations of fact and any intending purchaser or lessee must satisfy himself by inspection or otherwise as to the correctness of each of the statements contained in these particulars. Any floorplans on this brochure are for illustrative purposes only and are not necessarily to scale.

Offices at: Chorlton, Didsbury, Disley, Hale, Glossop, Macclesfield, Manchester Deansgate, Manchester Whitworth Street, New Mills, Sale, Wilmslow and Withington

14 Market St, Disley, Cheshire, Stockport SK12 2AA

01663 767878

disley@jordanfishwick.co.uk

www.jordanfishwick.co.uk