



*jordan fishwick*

Knightwake Road New Mills High Peak





## Knightwake Road New Mills High Peak SK22 3DQ

£340,000



### The Property

Situated within a highly regarded area close to High Lea Park and convenient for all New Mills amenities, a versatile, split-level semi-detached home. Well presented and boasting open forward views from this cul-de-sac position. Driveway parking for two vehicles and well stocked, colourful gardens. Comprising: entrance hall, store, dining kitchen, living room, three generous bedrooms and a bathroom with separate shower. Pvc double glazing, gas central heating and a wealth of storage cupboards. Viewing highly recommended.






- Sought After Location
- Cul-de-sac Position
- Convenient For New Mills Amenities
- Three Generous Bedrooms
- Forward Views
- Enclosed Private Gardens
- Parking for Two Cars
- Pvc Double Glazing and Gas Central Heating
- Spacious Bathroom With Separate Shower
- Lots Of Storage

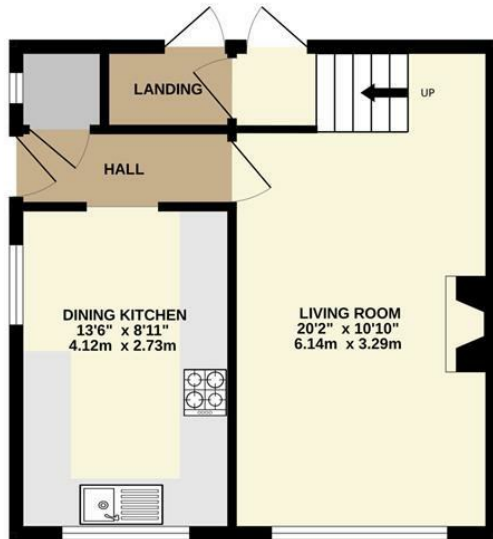


**Postcode** SK22 3DQ  
**EPC Rating** D  
**Local Authority** High Peak  
**Council Tax** C

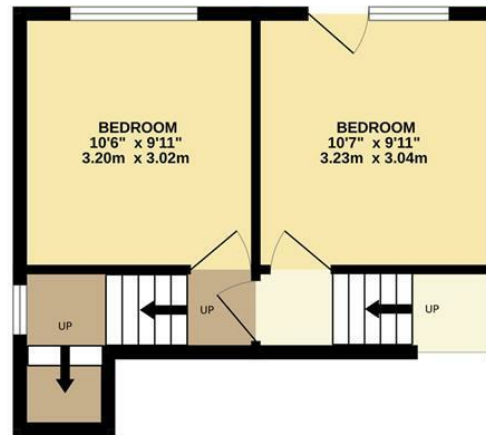
Energy Efficiency Rating		
	Current	Potential
Very energy efficient - lower running costs		
(92 plus) A		
(81-91) B		
(69-80) C		77
(55-68) D	67	
(39-54) E		
(21-38) F		
(1-20) G		
Not energy efficient - higher running costs		
England & Wales	EU Directive 2002/91/EC 	



GROUND FLOOR



SPLIT LEVEL GROUND FLOOR



FIRST FLOOR



Whilst every attempt has been made to ensure the accuracy of the floorplan contained here, measurements of doors, windows, rooms and any other items are approximate and no responsibility is taken for any error, omission or mis-statement. This plan is for illustrative purposes only and should be used as such by any prospective purchaser. The services, systems and appliances shown have not been tested and no guarantee as to their operability or efficiency can be given.  
Made with Metropix ©2025



These particulars are believed to be accurate but they are not guaranteed and do not form a contract. Neither Jordan Fishwick nor the vendor or lessor accept any responsibility in respect of these particulars, which are not intended to be statements or representations of fact and any intending purchaser or lessee must satisfy himself by inspection or otherwise as to the correctness of each of the statements contained in these particulars. Any floorplans on this brochure are for illustrative purposes only and are not necessarily to scale.

Offices at: Chorlton, Didsbury, Disley, Hale, Glossop, Macclesfield, Manchester Deansgate, Manchester Whitworth Street, New Mills, Sale, Wilmslow and Withington

14 Market St, Disley, Cheshire, Stockport SK12 2AA

01663 767878

disley@jordanfishwick.co.uk

www.jordanfishwick.co.uk