



*jordan fishwick*

Hall Street New Mills High Peak





## Hall Street New Mills High Peak SK22 3BR

Price £425,000



### The Property

A lovely traditional red brick semi detached property in a popular location. Built and owned by the same family with large bright rooms and a good sized corner plot. Comprising; Entrance hall, ground floor shower room, living room with bay window and double internal doors leading to; dining room with patio doors leading into the rear garden, breakfast kitchen, utility room, whilst to the first floor there are three bedrooms and family bathroom. Outside the property has garden to three sides, an integral garage and ample off road parking. Well maintained with open aspect and views to the front. No onward chain.





- Traditional Three Bedroom Semi Detached Property in a Popular Location
- Large Plot with Garden To Three Sides, Rear with Lawn and Patio Areas
- Extended Ground Floor Providing a Shower Room Plus Utility Room
- Ample Off Road Parking Plus Integral Garage
- Lovely Open Aspect to the Front
- Two Large Bright Reception Rooms
- Well Presented with a Neutral Colour Scheme Throughout

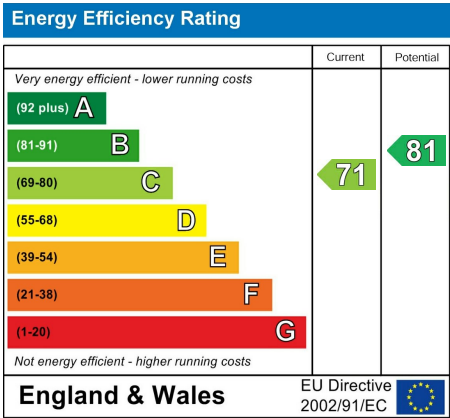


Postcode SK22 3BR

EPC Rating C

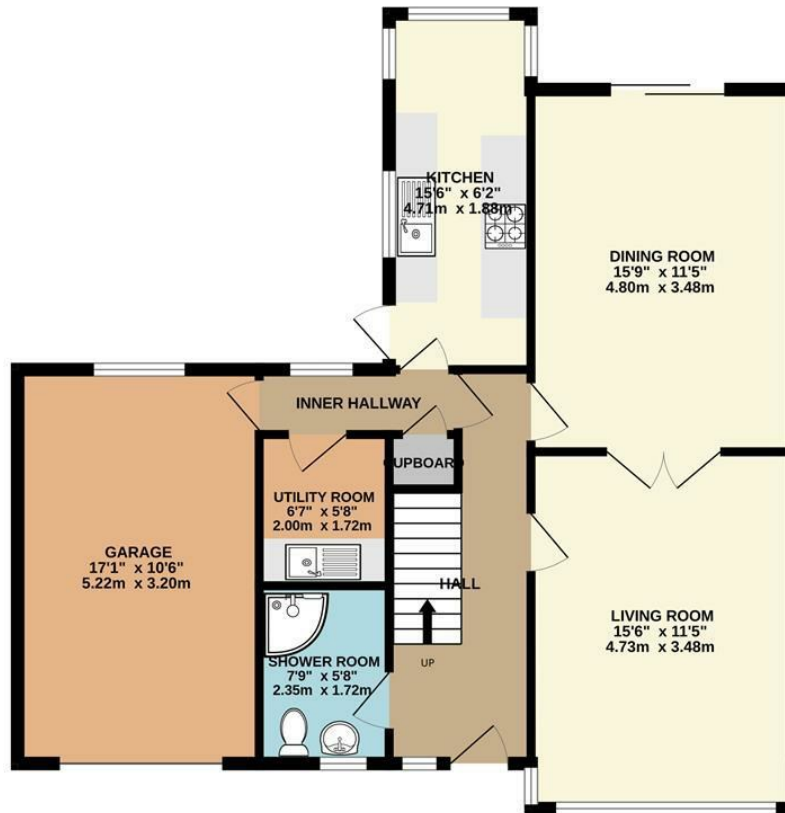
Local Authority High Peak

Council Tax C

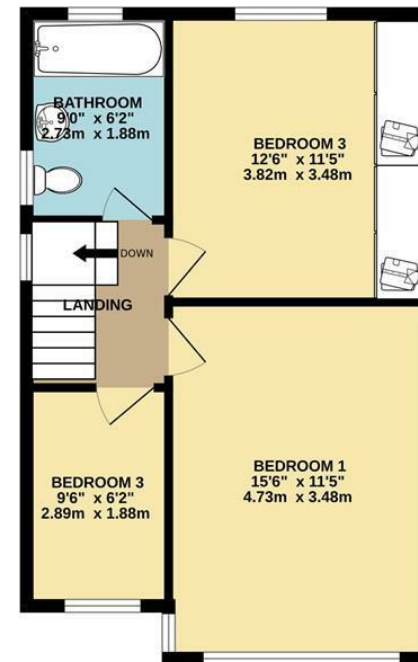




GROUND FLOOR  
834 sq.ft. (77.5 sq.m.) approx.



1ST FLOOR  
479 sq.ft. (44.5 sq.m.) approx.



TOTAL FLOOR AREA : 1313 sq.ft. (122.0 sq.m.) approx.

Whilst every attempt has been made to ensure the accuracy of the floorplan contained here, measurements of doors, windows, rooms and any other items are approximate and no responsibility is taken for any error, omission or mis-statement. This plan is for illustrative purposes only and should be used as such by any prospective purchaser. The services, systems and appliances shown have not been tested and no guarantee as to their operability or efficiency can be given.  
Made with Metropix ©2025



These particulars are believed to be accurate but they are not guaranteed and do not form a contract. Neither Jordan Fishwick nor the vendor or lessor accept any responsibility in respect of these particulars, which are not intended to be statements or representations of fact and any intending purchaser or lessee must satisfy himself by inspection or otherwise as to the correctness of each of the statements contained in these particulars. Any floorplans on this brochure are for illustrative purposes only and are not necessarily to scale.

Offices at: Chorlton, Didsbury, Disley, Hale, Glossop, Macclesfield, Manchester Deansgate, Manchester Whitworth Street, New Mills, Sale, Wilmslow and Withington

2 Union Road, New Mills, High Peak, Derbyshire, SK22 3ES

01663 767878

[newmills@jordanfishwick.co.uk](mailto:newmills@jordanfishwick.co.uk)

[www.jordanfishwick.co.uk](http://www.jordanfishwick.co.uk)