



*jordan fishwick*

Hyde Bank Road New Mills High Peak





## Hyde Bank Road New Mills High Peak SK22 4NN

£250,000



### The Property

Overlooking the Torrs in the heart of New Mills a very well presented and charming stone built terraced property. Set back from the road behind a walled frontage in a popular and extremely convenient position. Ideal for First Time Buyers and offering spacious two bedroom accommodation which also comprises: living room, inner hall, spacious dining kitchen and a first floor white bathroom. Pvc double glazing, gas central heating and landscaped low maintenance paved garden with stone shed. Viewing Essential.





- Immaculately Presented Throughout
- Front and Rear Gardens
- Ideal First Time Buyer Property
- Two Good Sized Bedrooms
- Modern Dining Kitchen
- Low Maintenance Rear Garden
- Popular Convenient Position with Open Aspect to Front

Postcode

SK22 4NN

EPC Rating

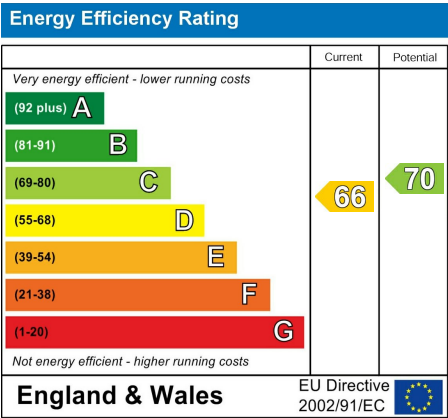
D

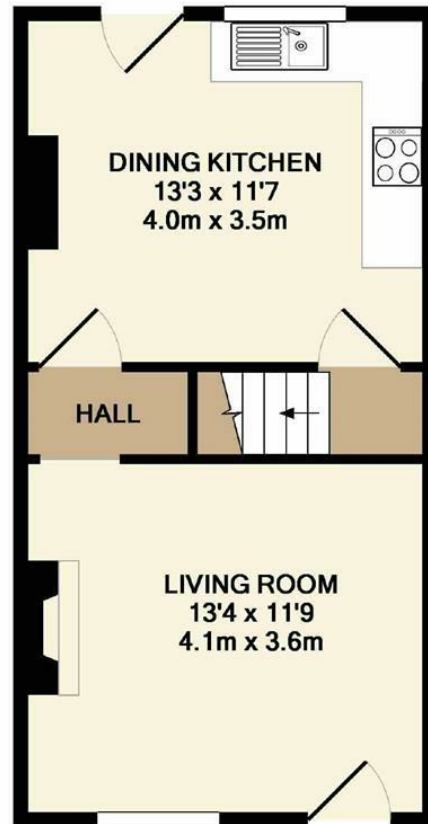
Local Authority

High Peak

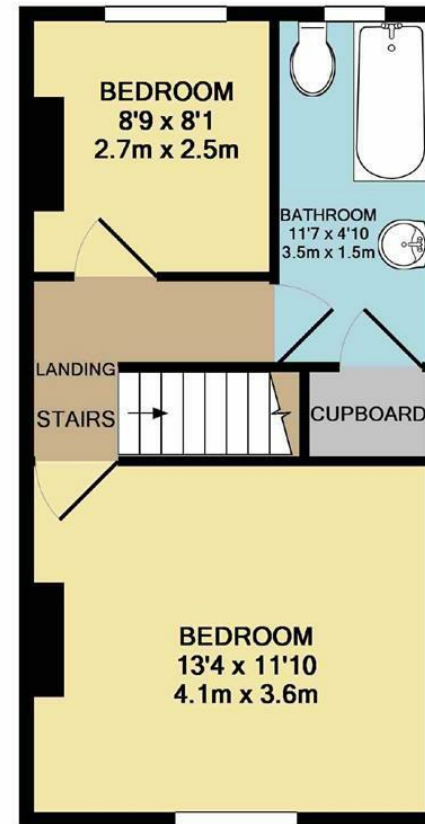
Council Tax

B





GROUND FLOOR



1ST FLOOR

Whilst every attempt has been made to ensure the accuracy of the floor plan contained here, measurements of doors, windows, rooms and any other items are approximate and no responsibility is taken for any error, omission, or mis-statement. This plan is for illustrative purposes only and should be used as such by any prospective purchaser. The services, systems and appliances shown have not been tested and no guarantee as to their operability or efficiency can be given  
Made with Metropix ©2019



These particulars are believed to be accurate but they are not guaranteed and do not form a contract. Neither Jordan Fishwick nor the vendor or lessor accept any responsibility in respect of these particulars, which are not intended to be statements or representations of fact and any intending purchaser or lessee must satisfy himself by inspection or otherwise as to the correctness of each of the statements contained in these particulars. Any floorplans on this brochure are for illustrative purposes only and are not necessarily to scale.

Offices at: Chorlton, Didsbury, Disley, Hale, Glossop, Macclesfield, Manchester Deansgate, Manchester Whitworth Street, New Mills, Sale, Wilmslow and Withington

2 Union Road, New Mills, High Peak, Derbyshire, SK22 3ES

**01663 767878**

[newmills@jordanfishwick.co.uk](mailto:newmills@jordanfishwick.co.uk)

[www.jordanfishwick.co.uk](http://www.jordanfishwick.co.uk)