



jordan fishwick

Hayfield Road New Mills High Peak



Hayfield Road New Mills High Peak SK22 4HY

£500,000



The Property

Backing onto open farmland and enjoying forward views, a delightful, double-fronted detached bungalow. Position between New Mills and Birch Vale with the open countryside on your doorstep. Updated and improved in recent years this immaculate home also boasts a 21FT Orangery and a fantastic first floor conversion providing a generous master suite. Suitable for many types of buyers and also comprising: storm porch, hallway, open plan living dining kitchen, utility room, two ground floor bedrooms and a shower room. Solar panels for energy efficiency complimented by Pvc double glazing and gas central heating. Private gardens and ample off road parking with an attached garage. Viewing highly recommended.



- Stunning Detached Dormer Bungalow
- Two Ground Floor Bedrooms Plus First Floor Master Suite
- Backing Onto Fields
- Front and Rear Views
- Updated and Improved in Recent Years
- Very Well Presented Throughout
- 23FT Living Dining Kitchen
- 21FT Orangery
- Ample Driveway Parking and Attached Garage
- Private Gardens and Summerhouse

Postcode

SK22 4HY

EPC Rating

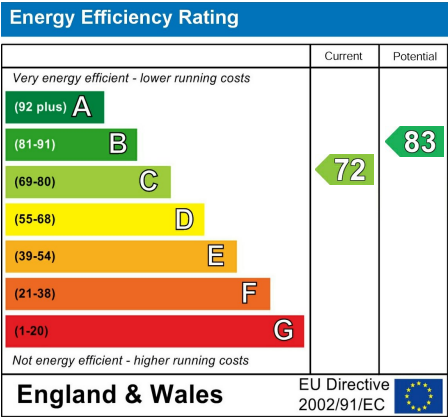
C

Local Authority

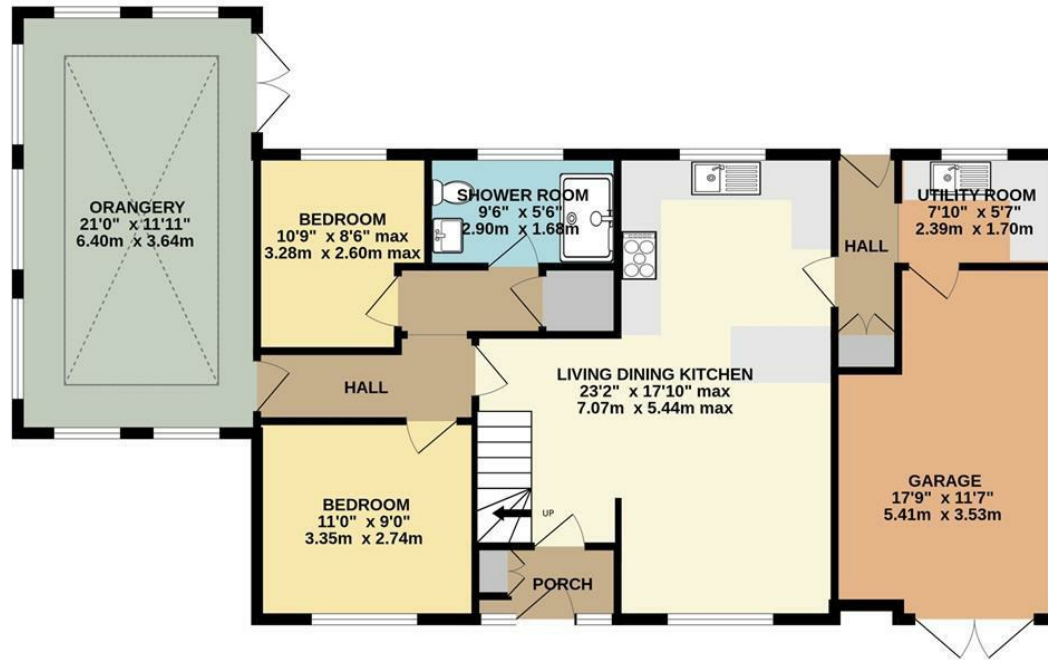
High Peak

Council Tax

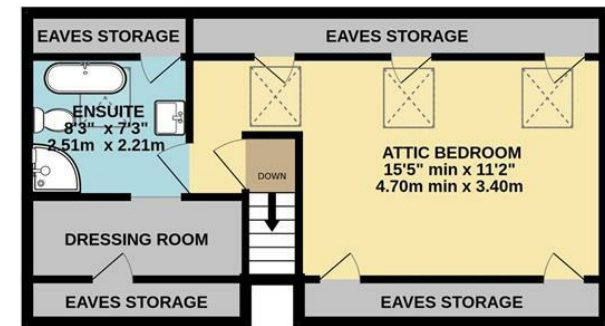
C



GROUND FLOOR



1ST FLOOR



Whilst every attempt has been made to ensure the accuracy of the floorplan contained here, measurements of doors, windows, rooms and any other items are approximate and no responsibility is taken for any error, omission or mis-statement. This plan is for illustrative purposes only and should be used as such by any prospective purchaser. The services, systems and appliances shown have not been tested and no guarantee as to their operability or efficiency can be given.
Made with Metropix ©2025



These particulars are believed to be accurate but they are not guaranteed and do not form a contract. Neither Jordan Fishwick nor the vendor or lessor accept any responsibility in respect of these particulars, which are not intended to be statements or representations of fact and any intending purchaser or lessee must satisfy himself by inspection or otherwise as to the correctness of each of the statements contained in these particulars. Any floorplans on this brochure are for illustrative purposes only and are not necessarily to scale.

Offices at: Chorlton, Didsbury, Disley, Hale, Glossop, Macclesfield, Manchester Deansgate, Manchester Whitworth Street, New Mills, Sale, Wilmslow and Withington

2 Union Road, New Mills, High Peak, Derbyshire, SK22 3ES

01663 767878

newmills@jordanfishwick.co.uk

www.jordanfishwick.co.uk