



jordan fishwick

Clough Mill, Slack Lane Little Hayfield High



Clough Mill, Slack Lane Little Hayfield High Peak SK22 2NJ

Offers In The Region Of



The Property

****REDUCED**** At the foot of Lantern Pike and forming part of a historic mill conversion in picturesque Little Hayfield, a stunning two double bedroom second floor apartment. Delightful and spacious, boasting fantastic forward views over Hayfield and surrounded by open countryside. Briefly comprising: communal lift access from the ground floor, private hall, open plan living room, fitted kitchen with appliances, master bedroom with en-suite shower room, second double bedroom and a family bathroom. Double glazed sash windows, electric heating, allocated parking and lovely well maintained shared grounds. Viewing highly recommended.

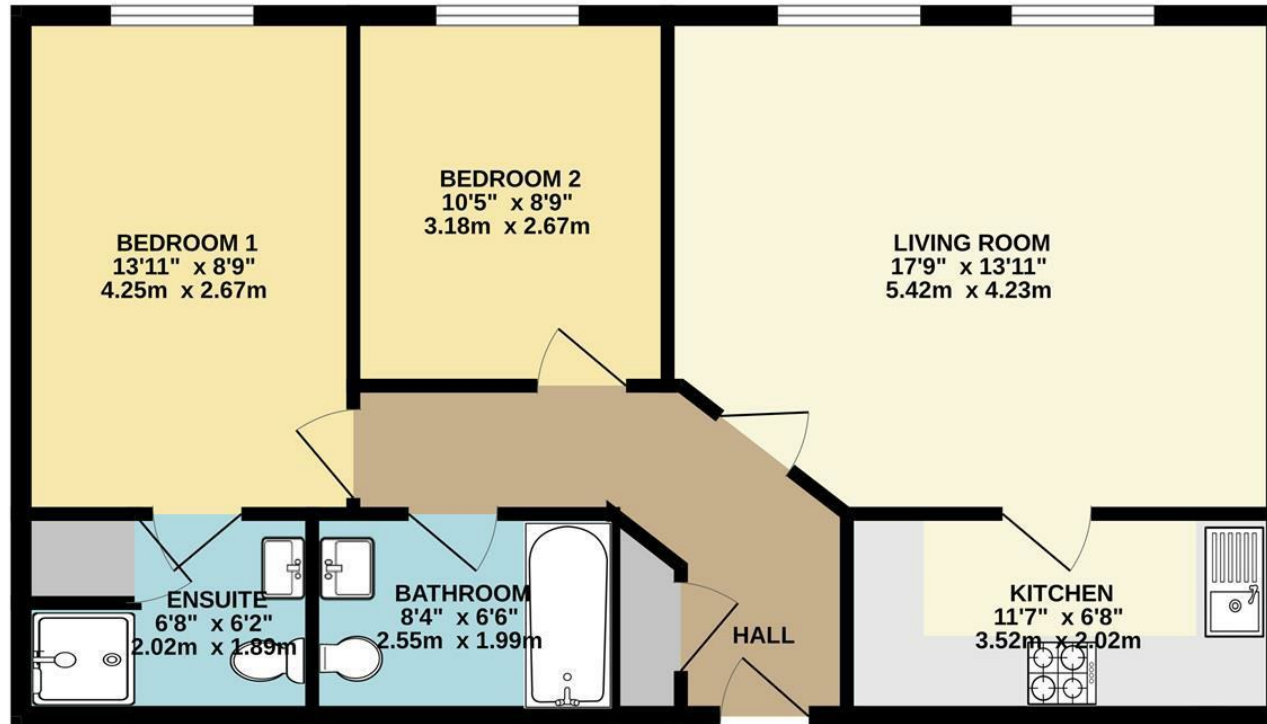


- Beautiful Mill Conversion in Stunning Grounds
- Two Double Bedrooms Master with En Suite
- Allocated Parking and Communal Gardens
- Lift Access
- Lovely Bright Apartment with Open Views
- Large Living/Dining Room plus Separate Kitchen
- Idyllic Hayfield Setting Surrounded by Countryside

Postcode SK22 2NJ
EPC Rating C
Local Authority High Peak
Council Tax D

Energy Efficiency Rating		
	Current	Potential
Very energy efficient - lower running costs		
(92 plus) A		
(81-91) B		85
(69-80) C	77	
(55-68) D		
(39-54) E		
(21-38) F		
(1-20) G		
Not energy efficient - higher running costs		
England & Wales	EU Directive 2002/91/EC	





Whilst every attempt has been made to ensure the accuracy of the floorplan contained here, measurements of doors, windows, rooms and any other items are approximate and no responsibility is taken for any error, omission or mis-statement. This plan is for illustrative purposes only and should be used as such by any prospective purchaser. The services, systems and appliances shown have not been tested and no guarantee as to their operability or efficiency can be given.
Made with Metropix ©2025



These particulars are believed to be accurate but they are not guaranteed and do not form a contract. Neither Jordan Fishwick nor the vendor or lessor accept any responsibility in respect of these particulars, which are not intended to be statements or representations of fact and any intending purchaser or lessee must satisfy himself by inspection or otherwise as to the correctness of each of the statements contained in these particulars. Any floorplans on this brochure are for illustrative purposes only and are not necessarily to scale.

Offices at: Chorlton, Didsbury, Disley, Hale, Glossop, Macclesfield, Manchester Deansgate, Manchester Whitworth Street, New Mills, Sale, Wilmslow and Withington

14 Market St, Disley, Cheshire, Stockport SK12 2AA

01663 767878

disley@jordanfishwick.co.uk
www.jordanfishwick.co.uk