



jordan fishwick

Heather Falls New Mills High Peak



Heather Falls New Mills High Peak SK22 3GA

£475,000



The Property

Stunning detached house located at the head of a cul de sac in the picturesque Heather Falls, New Mills, High Peak. This property boasts three reception rooms, perfect for entertaining guests or simply relaxing with the family. With four double bedrooms and two modern bathrooms, there is plenty of room for everyone to enjoy.

One of the unique features of this house is the lower ground floor sitting room, offering a cosy space to unwind. The recently fitted breakfast kitchen with quartz tops is not only stylish but also functional with integrated appliances and a breakfast bar. as well as a Juliette Balcony offering stunning open views.

Open views to the rear of the property provide a peaceful and scenic backdrop, creating a tranquil atmosphere.



- Stunning Family Home Over Three Floors
- Panoramic Open Views Over New Mills and Countryside Beyond
- Recently Fitted Breakfast Kitchen with Quartz Worktops and Juliette Balcony
- Four Double Bedrooms Master with En Suite Bathroom
- Separate Living and Dining Room
- Energy Rating; Council Tax Band; E
- Lower Ground Floor Sitting Room with French Doors Leading into the Garden
- Driveway Parking and Integrated Garage with Utility Area

Postcode

SK22 3GA

EPC Rating

C

Local Authority

High Peak

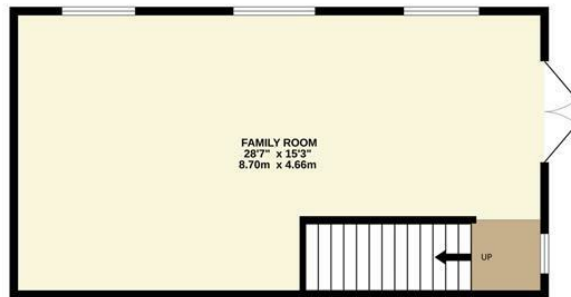
Council Tax

E

Energy Efficiency Rating		
	Current	Potential
Very energy efficient - lower running costs		
(92 plus) A		
(81-91) B		
(69-80) C	78	84
(55-68) D		
(39-54) E		
(21-38) F		
(1-20) G		
Not energy efficient - higher running costs		
England & Wales	EU Directive 2002/91/EC	



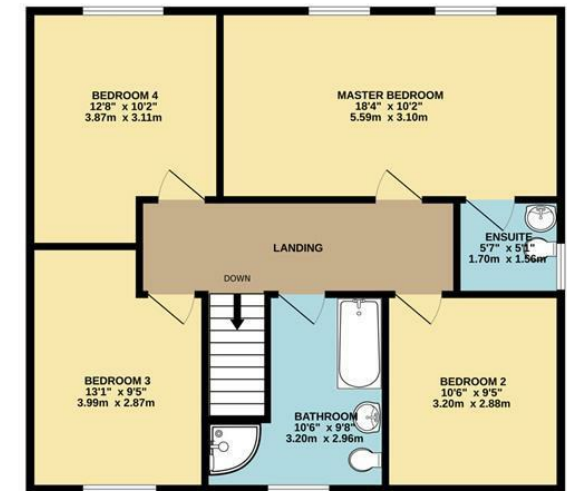
BASEMENT



GROUND FLOOR



1ST FLOOR



Whilst every attempt has been made to ensure the accuracy of the floorplan contained here, measurements of doors, windows, rooms and any other items are approximate and no responsibility is taken for any error, omission or mis-statement. This plan is for illustrative purposes only and should be used as such by any prospective purchaser. The services, systems and appliances shown have not been tested and no guarantee as to their operability or efficiency can be given.
Made with Metropix ©2024



These particulars are believed to be accurate but they are not guaranteed and do not form a contract. Neither Jordan Fishwick nor the vendor or lessor accept any responsibility in respect of these particulars, which are not intended to be statements or representations of fact and any intending purchaser or lessee must satisfy himself by inspection or otherwise as to the correctness of each of the statements contained in these particulars. Any floorplans on this brochure are for illustrative purposes only and are not necessarily to scale.

Offices at: Chorlton, Didsbury, Disley, Hale, Glossop, Macclesfield, Manchester Deansgate, Manchester Whitworth Street, New Mills, Sale, Wilmslow and Withington

2 Union Road, New Mills, High Peak, Derbyshire, SK22 3ES

01663 767878

newmills@jordanfishwick.co.uk

www.jordanfishwick.co.uk