



jordan fishwick

Diglands Close New Mills High Peak



Diglands Close New Mills High Peak SK22 4HS

Offers In The Region Of



The Property

A stunning Edwardian semi detached property built by John and Mary Mackie in 1902. Lovingly preserved and maintained retaining many original features including windows, dado and picture rails, doors and panelling. Secluded location with garden to three sides, driveway parking and briefly comprising; Original front door leading into entrance hallway with oak staircase and panelling, living room with bay window and feature fireplace, dining room with original storage cupboards, study, kitchen and ground floor WC. To the first floor there is a bright landing with skylight, three double bedrooms and bathroom. Externally there is a well stocked, enclosed wrap around garden with patio areas, lawn and mature planting. Not just a beautiful home but a true iconic piece of New Mills history.



- Built by John and Mary Mackie in 1902 and Steeped in History
- Three Bedroom Semi Detached Period Property Bursting with Original Features and Character
- Secluded Location with Gardens to Three sides and Off Road Parking
- Living Room with Bay Window, Dining Room, Study and Ground Floor WC
- Original Doors, Windows, Staircase and Panelling
- Recent Remedial Works Including New Boiler and Re Roof

Postcode

SK22 4HS

EPC Rating

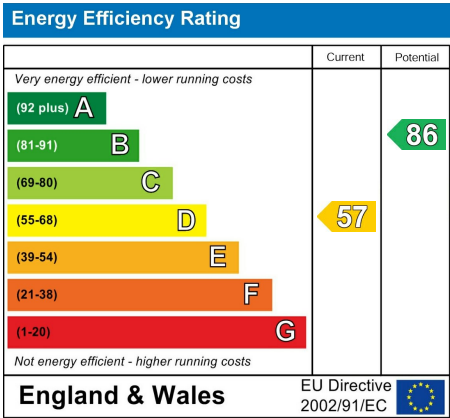
D

Local Authority

High Peak Borough

Council Tax

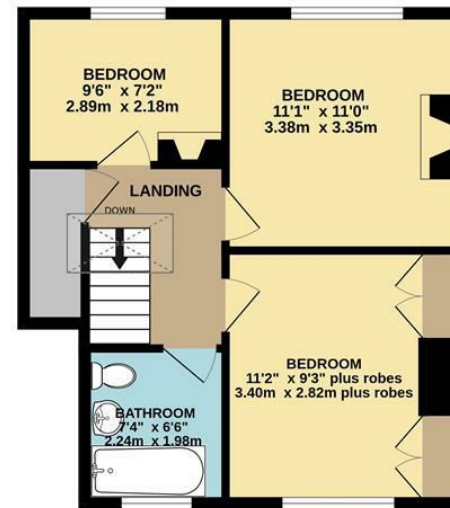
C



GROUND FLOOR



1ST FLOOR



Whilst every attempt has been made to ensure the accuracy of the floorplan contained here, measurements of doors, windows, rooms and any other items are approximate and no responsibility is taken for any error, omission or mis-statement. This plan is for illustrative purposes only and should be used as such by any prospective purchaser. The services, systems and appliances shown have not been tested and no guarantee as to their operability or efficiency can be given.
Made with Metropix ©2025



These particulars are believed to be accurate but they are not guaranteed and do not form a contract. Neither Jordan Fishwick nor the vendor or lessor accept any responsibility in respect of these particulars, which are not intended to be statements or representations of fact and any intending purchaser or lessee must satisfy himself by inspection or otherwise as to the correctness of each of the statements contained in these particulars. Any floorplans on this brochure are for illustrative purposes only and are not necessarily to scale.

Offices at: Chorlton, Didsbury, Disley, Hale, Glossop, Macclesfield, Manchester Deansgate, Manchester Whitworth Street, New Mills, Sale, Wilmslow and Withington

2 Union Road, New Mills, High Peak, Derbyshire, SK22 3ES

01663 767878

newmills@jordanfishwick.co.uk

www.jordanfishwick.co.uk