





£900,000



Features

- Standing In Three Acres
- Delightful Views
- Detached Executive Barn
- Four Bedrooms
- Superbly Presented Throughout
- On The Doorstep of Open Countryside

Occupying an enviable position with the most amazing forward views over its very own THREE ACRES of GRAZING LAND, a truly remarkable, stone-built detached converted barn. Offering a wealth of features and overlooking New Mills/Furness Vale with the open countryside on the doorstep. Superbly presented and vastly improved in recent years, this spacious home is guaranteed to impress. Comprising: entrance hall, wc, utility room, 40ft open plan living room with full height windows and galleried landing, re-fitted breakfast kitchen with AGA and central island, ground floor guest bedroom, first floor master bedroom with en-suite bathroom and fitted wardrobes, two further double bedrooms, family bathroom and a tremendous landing with space for reading or studying. Full of exposed beams and character yet newly installed double glazing throughout and underfloor heating. Externally there is ample off road parking, lawn gardens with decking and stone patio, versatile garden room and enclosed paddock/grazing area. Viewing is a must!

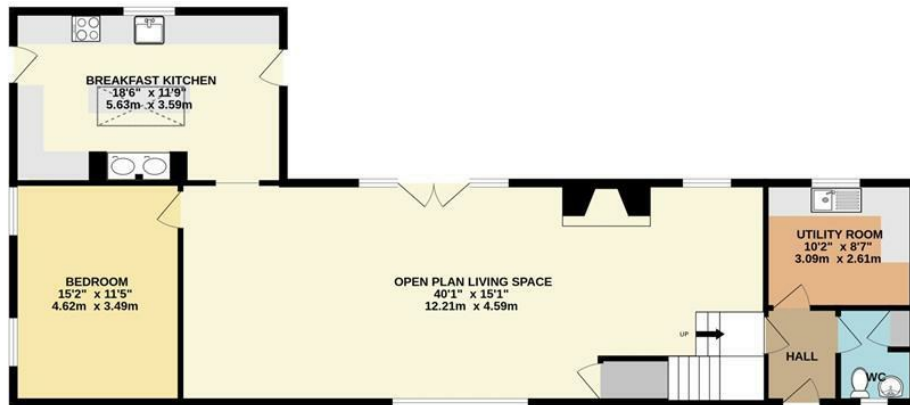


The town of New Mills is set in an area of spectacular natural beauty standing above a natural rocky gorge, known as The Torrs, where the River Sett joins the River Goyt. Surrounded by Countryside and nature walks it is an ideal place to live. The town centre offers shops, schools, public houses, swimming pool and leisure facilities. With two railway stations on direct routes to Manchester and Sheffield, New Mills is ideal for those working in the city. Excellent road links with the A555 link road to Manchester Airport have opened up the area to many wanting a taste of the good life with many places to explore yet remain accessible for the daily commuters.





GROUND FLOOR



1ST FLOOR



Whilst every attempt has been made to ensure the accuracy of the floorplan contained here, measurements of doors, windows, rooms and any other items are approximate and no responsibility is taken for any error, omission or mis-statement. This plan is for illustrative purposes only and should be used as such by any prospective purchaser. The services, systems and appliances shown have not been tested and no guarantee as to their operability or efficiency can be given.
Made with Metropix ©2025



IMPORTANT: we would like to inform prospective purchasers that these sales particulars have been prepared as a general guide only. A detailed survey has not been carried out, nor the services, appliances and fittings tested. Room sizes should not be relied upon for furnishing purposes and are approximate. If floor plans are included, they are for guidance only and illustration purposes only and may not be to scale. If there are any important matters likely to affect your decision to buy, please contact us before viewing the property.