



jordan fishwick

The Glade Hayfield High Peak



The Glade Hayfield High Peak SK22 2AB

£495,000



The Property

On a small, popular, select development in the charming village of Hayfield, a delightful, 2014 built, four bedroom detached family home. Superbly presented and backing onto a wooded copse, this lovely home has to be viewed to be appreciated. Ideally positioned for Hayfield Primary School and the village amenities, pvc double glazing and gas central heating. Comprising: entrance hall, wc, utility room, living room, 21ft luxury dining kitchen with Quartz worktops and Quooker boiling water tap, first floor master bedroom with contemporary en-suite, three further bedrooms and a modern white family bathroom with bath and separate shower. Attached 17FT garage, driveway parking for two cars and a sunny southerly facing enclosed rear garden.



- Southerly Facing Rear Garden
- Modern Four Bedroom Detached
- Sought After Location
- Part of a Select Development
- Backing onto Woodland
- 21FT Dining Kitchen plus Utility
- Double Length Driveway and Garage
- Immaculately Presented Throughout
- High Energy Efficiency

Postcode

SK22 2AB

EPC Rating

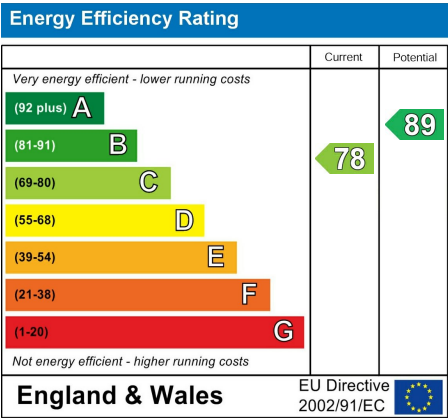
C

Local Authority

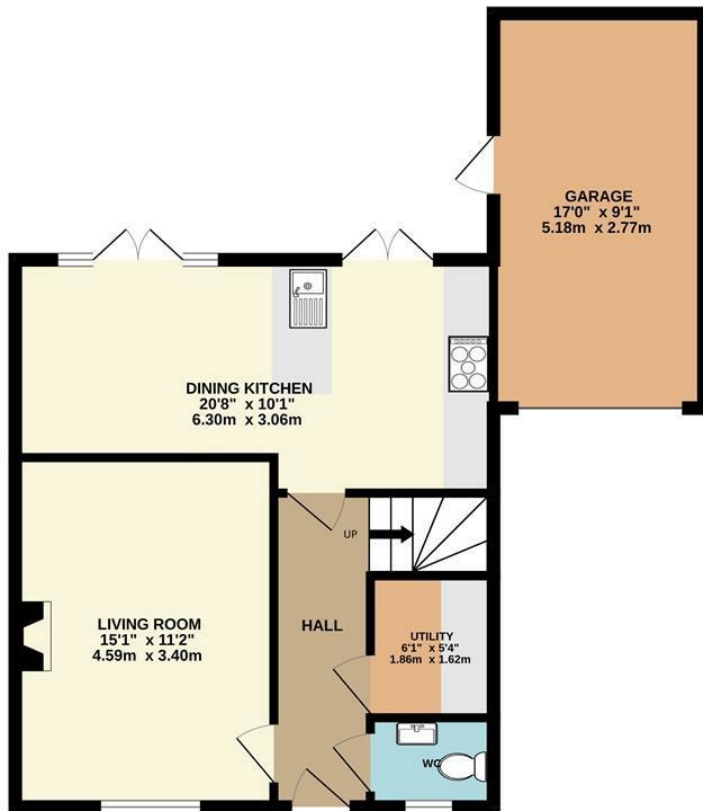
High Peak

Council Tax

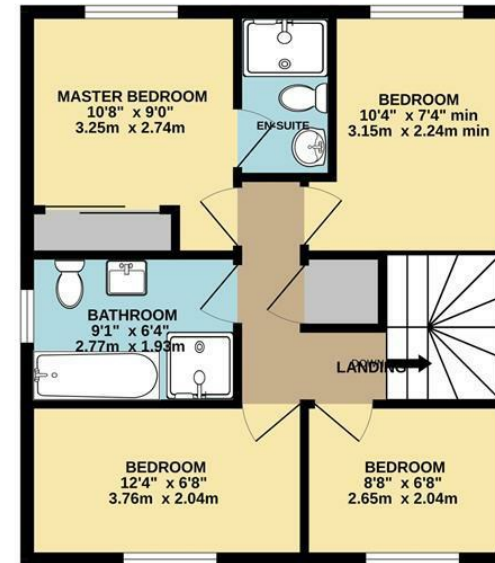
E



GROUND FLOOR



1ST FLOOR



Whilst every attempt has been made to ensure the accuracy of the floorplan contained here, measurements of doors, windows, rooms and any other items are approximate and no responsibility is taken for any error, omission or mis-statement. This plan is for illustrative purposes only and should be used as such by any prospective purchaser. The services, systems and appliances shown have not been tested and no guarantee as to their operability or efficiency can be given.
Made with Metropix ©2025



These particulars are believed to be accurate but they are not guaranteed and do not form a contract. Neither Jordan Fishwick nor the vendor or lessor accept any responsibility in respect of these particulars, which are not intended to be statements or representations of fact and any intending purchaser or lessee must satisfy himself by inspection or otherwise as to the correctness of each of the statements contained in these particulars. Any floorplans on this brochure are for illustrative purposes only and are not necessarily to scale.

Offices at: Chorlton, Didsbury, Disley, Hale, Glossop, Macclesfield, Manchester Deansgate, Manchester Whitworth Street, New Mills, Sale, Wilmslow and Withington

14 Market St, Disley, Cheshire, Stockport SK12 2AA

01663 767878

disley@jordanfishwick.co.uk

www.jordanfishwick.co.uk