



jordan fishwick

Old Smithy Road New Mills High Peak



Old Smithy Road New Mills High Peak SK22 3EH

Reduced To £525,000



The Property

Exceptional, versatile and spacious accommodation with an outstanding open rear aspect! Arranged over four floors with two floors of living space and two floors for bedrooms! Conveniently located for New Mills town centre and both railway stations, a four double bedroom semi-detached family home. Immaculately presented throughout, enclosed sunny south facing private garden, driveway parking for three/four cars including a car port and fantastic garden store. Comprising: Ground floor: Hall, Living Room with Juliet Balcony, Sitting Room/Study or even fifth bedroom, WC, Lower Ground Floor: 22ft Living Dining Kitchen opening in to the rear garden, WC and Utility Room, First floor; Master Bedroom with En-Suite and Juliet Balcony, Double Bedroom and Family Bathroom, Two further Double Bedrooms and a Shower Room on the Second Floor. No Onward Chain and High Energy Efficiency. Viewing Essential.



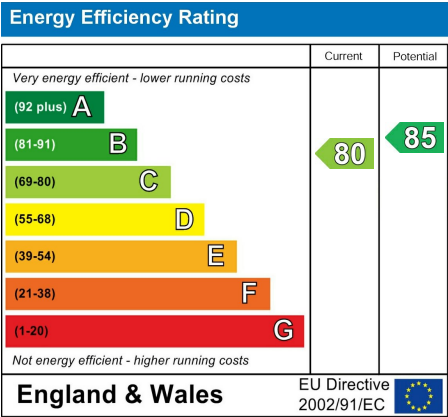
- Spacious Four/Five Double Bedroom Semi-Detached with NO CHAIN
- 195 SQM of Beautifully Presented Accomodation Arranged Over Four Floors
- Stunning Views and Open Rear Aspect
- Bright and Spacious 22FT Open Plan Dining Kitchen with Separate Utility Room
- Enclosed Rear Garden with Store and Parking with Car Port.
- Master Bedroom with En Suite and Juliette Balcony
- Family Bathroom, Shower Room and Lower Ground Floor WC
- Living Room with Lovely Views and Juliette Balcony
- Convenient For New Mills Amenities and Both Railway Stations
- A Proper Family Home with Play Room/Study

PostcodeSK22 3EH

EPC RatingC

Local AuthorityHigh Peak

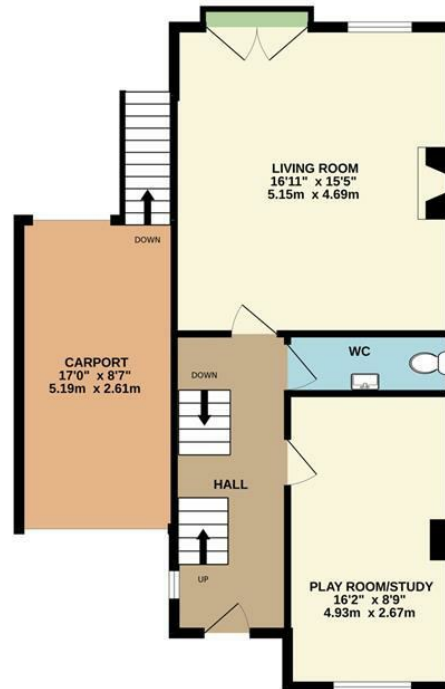
Council TaxD



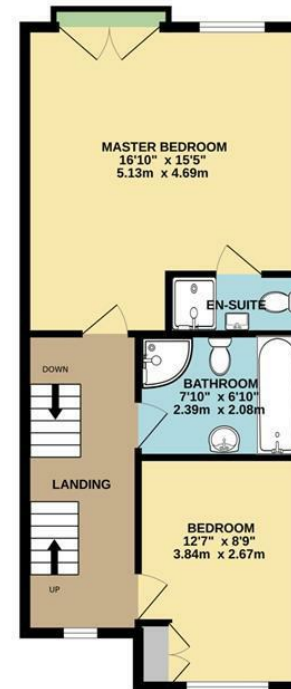
BASEMENT



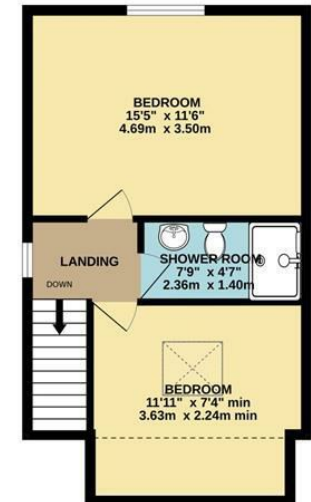
GROUND FLOOR



1ST FLOOR



2ND FLOOR



Whilst every attempt has been made to ensure the accuracy of the floorplan contained here, measurements of doors, windows, rooms and any other items are approximate and no responsibility is taken for any error, omission or mis-statement. This plan is for illustrative purposes only and should be used as such by any prospective purchaser. The services, systems and appliances shown have not been tested and no guarantee as to their operability or efficiency can be given.
Made with Metropix ©2025



These particulars are believed to be accurate but they are not guaranteed and do not form a contract. Neither Jordan Fishwick nor the vendor or lessor accept any responsibility in respect of these particulars, which are not intended to be statements or representations of fact and any intending purchaser or lessee must satisfy himself by inspection or otherwise as to the correctness of each of the statements contained in these particulars. Any floorplans on this brochure are for illustrative purposes only and are not necessarily to scale.

Offices at: Chorlton, Didsbury, Disley, Hale, Glossop, Macclesfield, Manchester Deansgate, Manchester Whitworth Street, New Mills, Sale, Wilmslow and Withington

2 Union Road, New Mills, High Peak, Derbyshire, SK22 3ES

01663 767878

newmills@jordanfishwick.co.uk

www.jordanfishwick.co.uk