



jordan fishwick

Clough Mill, Slack Lane Little Hayfield High



Clough Mill, Slack Lane Little Hayfield High Peak SK22 2NJ

£239,950



The Property

Forming part of this historic mill conversion in picturesque Little Hayfield, a stunning TWO DOUBLE BEDROOM third floor apartment. Refurbished and improved by the current owners, this delightful and spacious apartment boast fantastic forward views over Hayfield and is ready to walk into. Available with No Chain and comprising: communal lift access from the ground floor, private hall, open plan living room with mezzanine relaxation area, fitted kitchen with appliances, master bedroom with en-suite shower room, second double bedroom and a re-fitted contemporary bathroom. Double glazed sash windows, new electric heating, allocated parking and lovely shared grounds at the foot of Lantern Pike. Viewing highly recommended.



- Stunning Third Floor Apartment
- Idyllic Setting with Fabulous Views
- Two Double Bedrooms Plus Mezzanine Area
- Re-fitted Bathroom and En-Suite
- Feature Spiral Staircase
- Double Glazing and New Electirc Heating
- Part Of a Historic Mill Conversion
- Parking and Shared Grounds
- Lift Access
- No Chain

Postcode

SK22 2NJ

EPC Rating

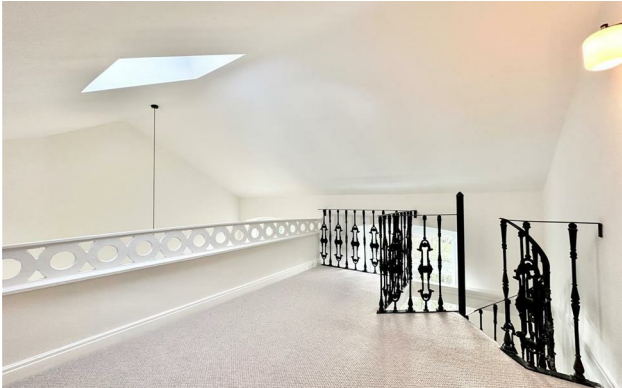
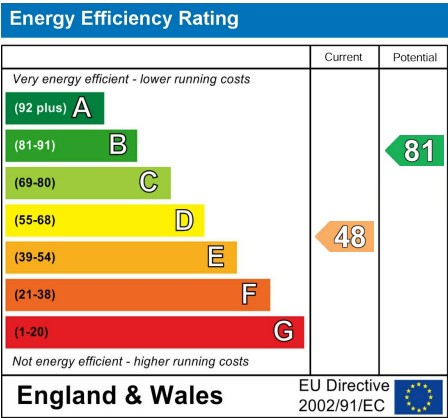
E

Local Authority

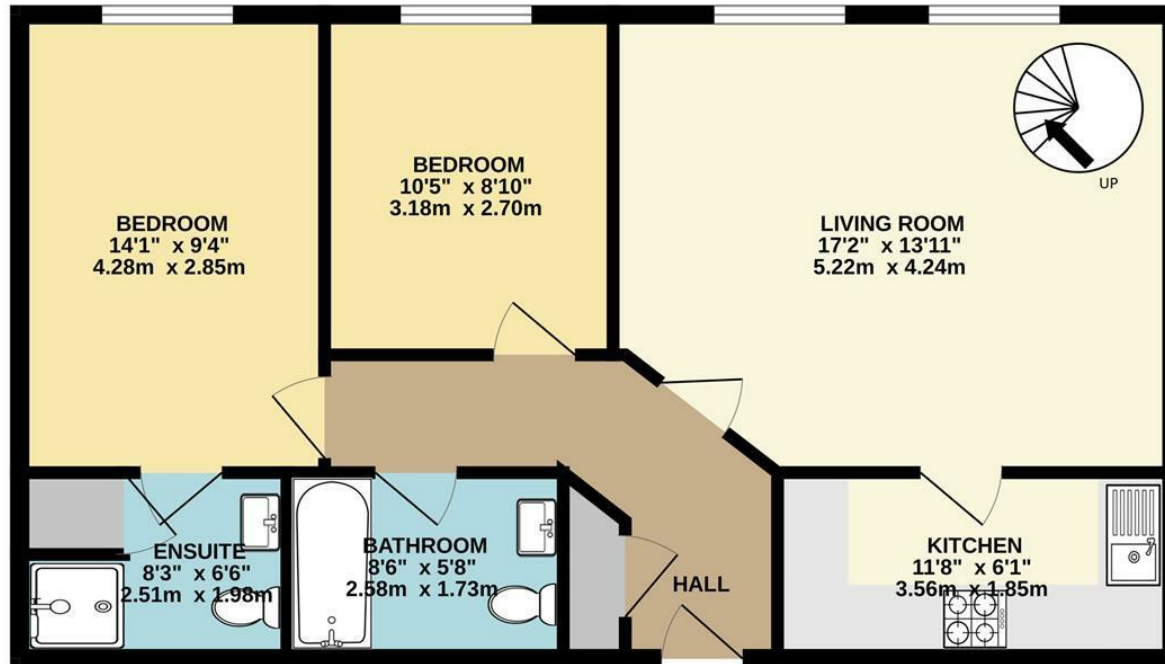
High Peak

Council Tax

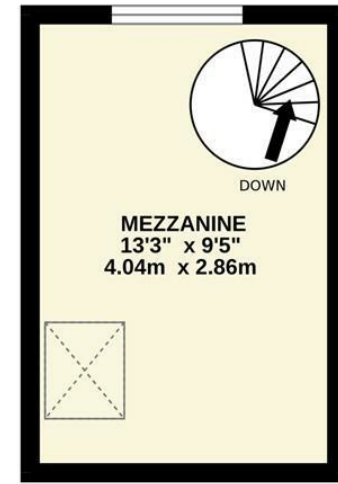
D



THIRD FLOOR



MEZZANINE



Whilst every attempt has been made to ensure the accuracy of the floorplan contained here, measurements of doors, windows, rooms and any other items are approximate and no responsibility is taken for any error, omission or mis-statement. This plan is for illustrative purposes only and should be used as such by any prospective purchaser. The services, systems and appliances shown have not been tested and no guarantee as to their operability or efficiency can be given.
Made with Metropix ©2024



These particulars are believed to be accurate but they are not guaranteed and do not form a contract. Neither Jordan Fishwick nor the vendor or lessor accept any responsibility in respect of these particulars, which are not intended to be statements or representations of fact and any intending purchaser or lessee must satisfy himself by inspection or otherwise as to the correctness of each of the statements contained in these particulars. Any floorplans on this brochure are for illustrative purposes only and are not necessarily to scale.

Offices at: Chorlton, Didsbury, Disley, Hale, Glossop, Macclesfield, Manchester Deansgate, Manchester Whitworth Street, New Mills, Sale, Wilmslow and Withington

2 Union Road, New Mills, High Peak, Derbyshire, SK22 3ES

01663 767878

newmills@jordanfishwick.co.uk

www.jordanfishwick.co.uk