



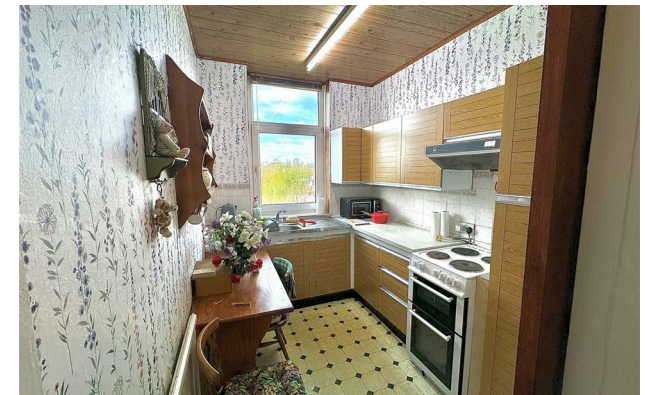
jordan fishwick

Arden Street New Mills High Peak



Arden Street New Mills High Peak SK22 4NS

Reduced To £269,950



The Property

A charming and spacious semi-detached house with immense potential spread over three floors. This property briefly comprises; entrance porch, spacious entrance hallway, two reception rooms, kitchen with open views to rear. With three generously sized bedrooms and bathroom to the first floor there is ample space for a growing family or for those who enjoy having a home office or hobby room.

The property features a pleasant rear garden with stunning open aspect as well as a walled frontage. Additionally, the useful cellar room offers huge potential with lower ground floor toilet, large storage areas and a door leading into the garden.

Whether you're looking to create your dream home or simply seeking a property with character and potential, this house on Arden Street is sure to captivate your imagination.



- Accommodation Over Three Floors
- Three Good Sized Bedrooms and Two Reception Rooms
- Lower Ground Floor Cellar with Huge Potential
- Ready For Cosmetic Updating
- Lovely Rear Garden with Open Aspect
- Walled Frontage
- Popular and Convenient Location
- Gas Central Heating and PVC Double Glazing

Postcode

SK22 4NS

EPC Rating

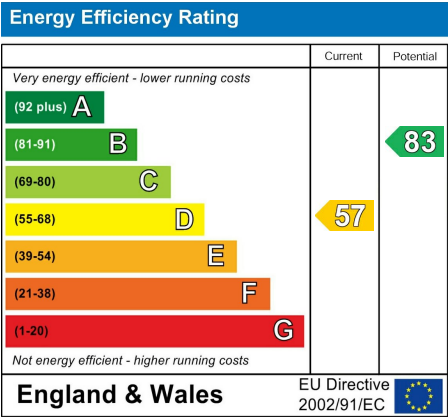
D

Local Authority

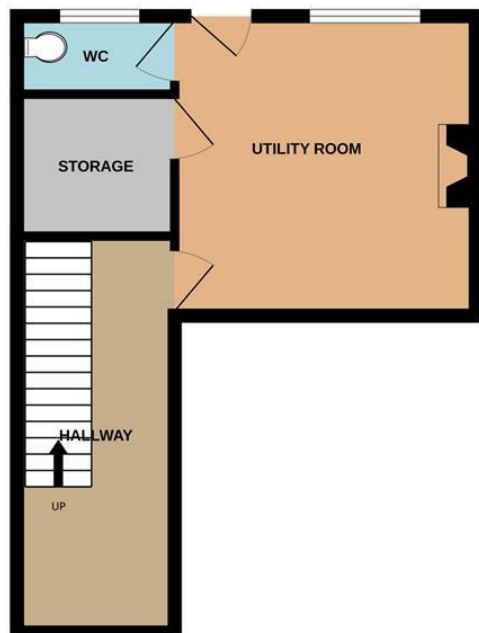
High Peak Borough Council

Council Tax

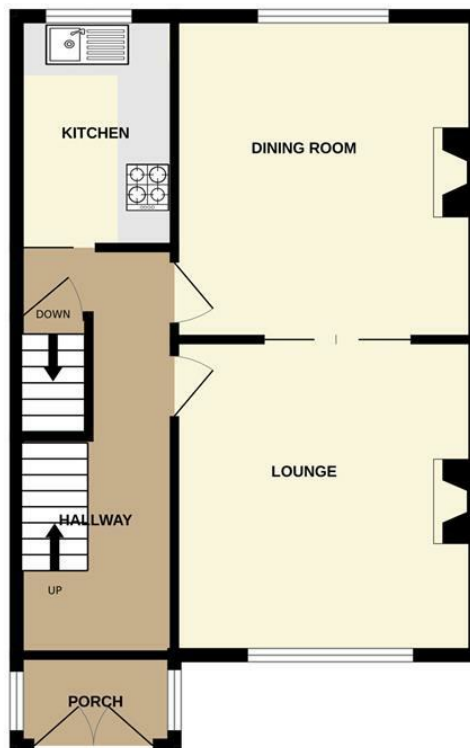
B



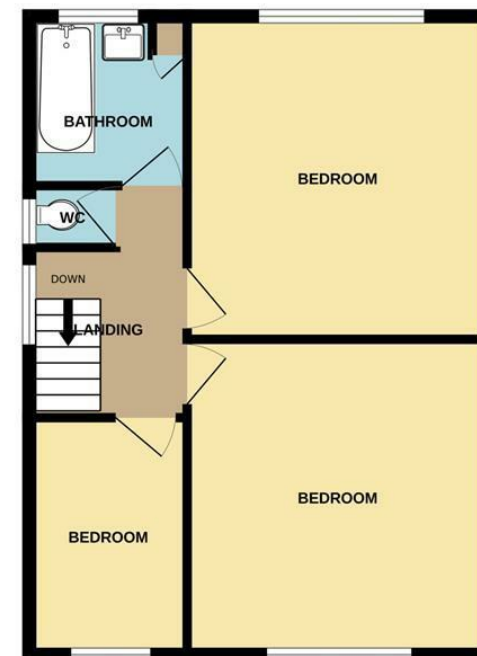
GROUND FLOOR



1ST FLOOR



2ND FLOOR



Whilst every attempt has been made to ensure the accuracy of the floorplan contained here, measurements of doors, windows, rooms and any other items are approximate and no responsibility is taken for any error, omission or mis-statement. This plan is for illustrative purposes only and should be used as such by any prospective purchaser. The services, systems and appliances shown have not been tested and no guarantee as to their operability or efficiency can be given.
Made with Metropix ©2024



These particulars are believed to be accurate but they are not guaranteed and do not form a contract. Neither Jordan Fishwick nor the vendor or lessor accept any responsibility in respect of these particulars, which are not intended to be statements or representations of fact and any intending purchaser or lessee must satisfy himself by inspection or otherwise as to the correctness of each of the statements contained in these particulars. Any floorplans on this brochure are for illustrative purposes only and are not necessarily to scale.

Offices at: Chorlton, Didsbury, Disley, Hale, Glossop, Macclesfield, Manchester Deansgate, Manchester Whitworth Street, New Mills, Sale, Wilmslow and Withington

2 Union Road, New Mills, High Peak, Derbyshire, SK22 3ES

01663 767878

newmills@jordanfishwick.co.uk

www.jordanfishwick.co.uk