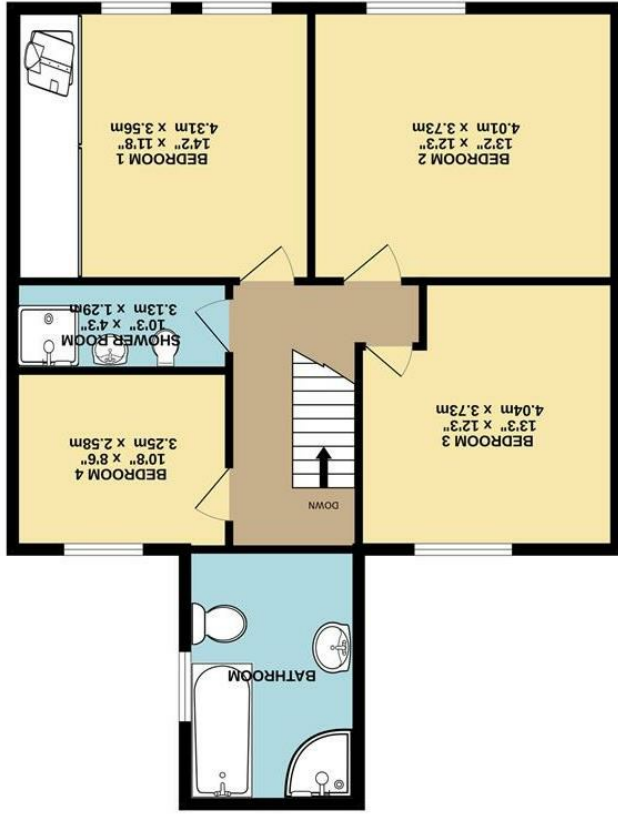
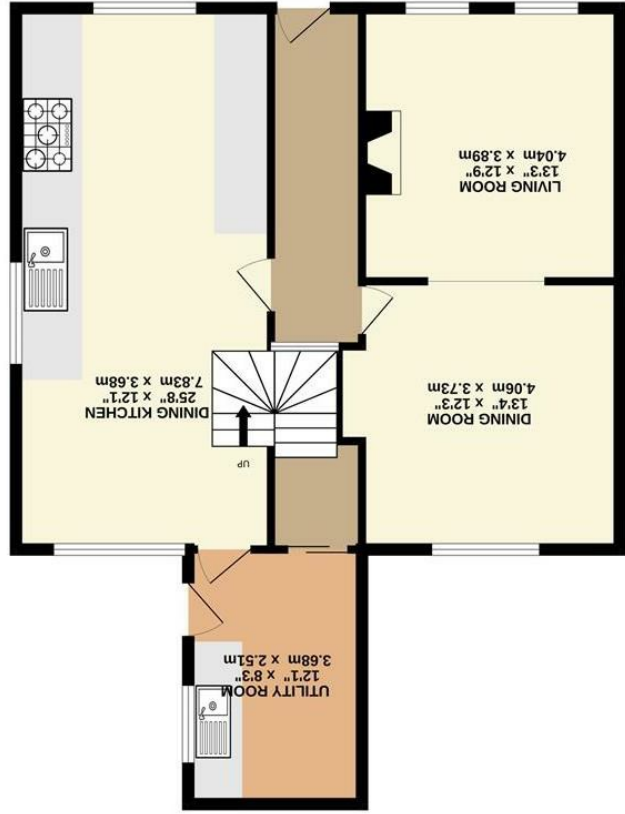


These particulars are believed to be accurate but they are not guaranteed and do not form a contract. Neither Jordan Fishwick nor the vendor or lessor accept any responsibility in respect of these particulars, which are not intended to be statements or representations of fact and any intending purchaser or lessee must satisfy himself by inspection or otherwise as to the correctness of each of the statements contained in these particulars. Any floorplans on this brochure are for illustrative purposes only and are not necessarily to scale.

Whilst every attempt has been made to ensure the accuracy of the floorplan contained here, measurements of doors, windows, rooms and other items are approximate and no responsibility is taken for any error or mis-statement. This plan is for illustrative purposes only and should be used as such by any prospective purchaser. The services, systems and appliances shown have not been tested and no guarantee as to their operation or efficiency can be given.  
Made with Metropix ©2024



1ST FLOOR  
834 sq.ft. (77.5 sq.m.) approx.



GROUND FLOOR  
828 sq.ft. (76.9 sq.m.) approx.



4 Glossop Road, Little Hayfield,  
High Peak, SK22 2NG

£499,950



### The Property

Nestled in the picturesque village of Little Hayfield, High Peak, this charming house on Glossop Road is a true gem waiting to be discovered. Boasting two reception rooms, four bedrooms, and two bathrooms, this property offers ample space for comfortable living.

As you step inside, you'll be greeted by stunning original features that have been lovingly preserved, adding character and warmth to the home. The open-plan dining kitchen is the centre and focal point of the home, featuring elegant quartz worktops and a large separate utility room for added convenience.

The four double bedrooms all offer breathtaking views of the surrounding countryside, providing a peaceful retreat at the end of the day. The property also includes a shower room and a separate family bathroom, ensuring that there is no shortage of facilities for the whole family.

A highlight of the living space is the open-plan living/dining room, complete with a cosy wood-burning stove, perfect for relaxing evenings with loved ones. Outside, the tiered garden is a delight, featuring a pond, seating areas, a summer house, a vegetable patch, outbuildings and a summer house, offering endless possibilities for outdoor enjoyment and backing onto Farmland.

If you're looking for a home that combines modern comfort with traditional charm in a stunning rural setting, this property on Glossop Road is sure to captivate your heart. Don't miss the opportunity to make this idyllic retreat your own.



- Beautifully Presented with a Stylish Decor and an Abundance of Original Features
- Sympathetically Updated and Upgraded by the Current Owners
- Stunning Open Views to Both Front and Rear and Adjoining Open Farmland
- Immaculate Open Plan Dining Kitchen with Granite Worktops and Separate Utility Room
- Four Double Bedrooms, Shower Room and Family Bathroom
- Driveway and Off Road Parking
- Delightful Tiered Gardens with Vegetable Patch, Seating Areas, Summerhouse and Open Views
- Open Plan Living/Dining Room with Wood Burning Stove

Postcode - SK22 2NG  
EPC Rating - D  
Local Authority - High Peak  
Council Tax - E

