



*jordan fishwick*

Parkhill Close New Mills High Peak

**Parkhill Close New Mills High Peak  
SK22 4EU**

**£265,000**



**The Property**

Occupying an elevated position in a well regarded residential area, a three bedroom semi detached family home. Stunning panoramic open views to the front and a lovely enclosed rear garden this property briefly comprises; entrance hall, living room with stunning views and dining kitchen overlooking the garden to the ground floor whilst to the first floor there are three bedrooms and a family bathroom. Externally there is a front garden and drive, to the rear there is pleasant enclosed garden with patio area, a lawn and established borders. Viewing highly recommended.




- Three Bedroom Semi Detached Property
- Cul de Sac Location
- Stunning Open Views
- Driveway Parking and Enclosed Rear Garden
- Popular Residential Location
- Dining Kitchen & Living Room with Open Views

**Postcode** SK22 4EU

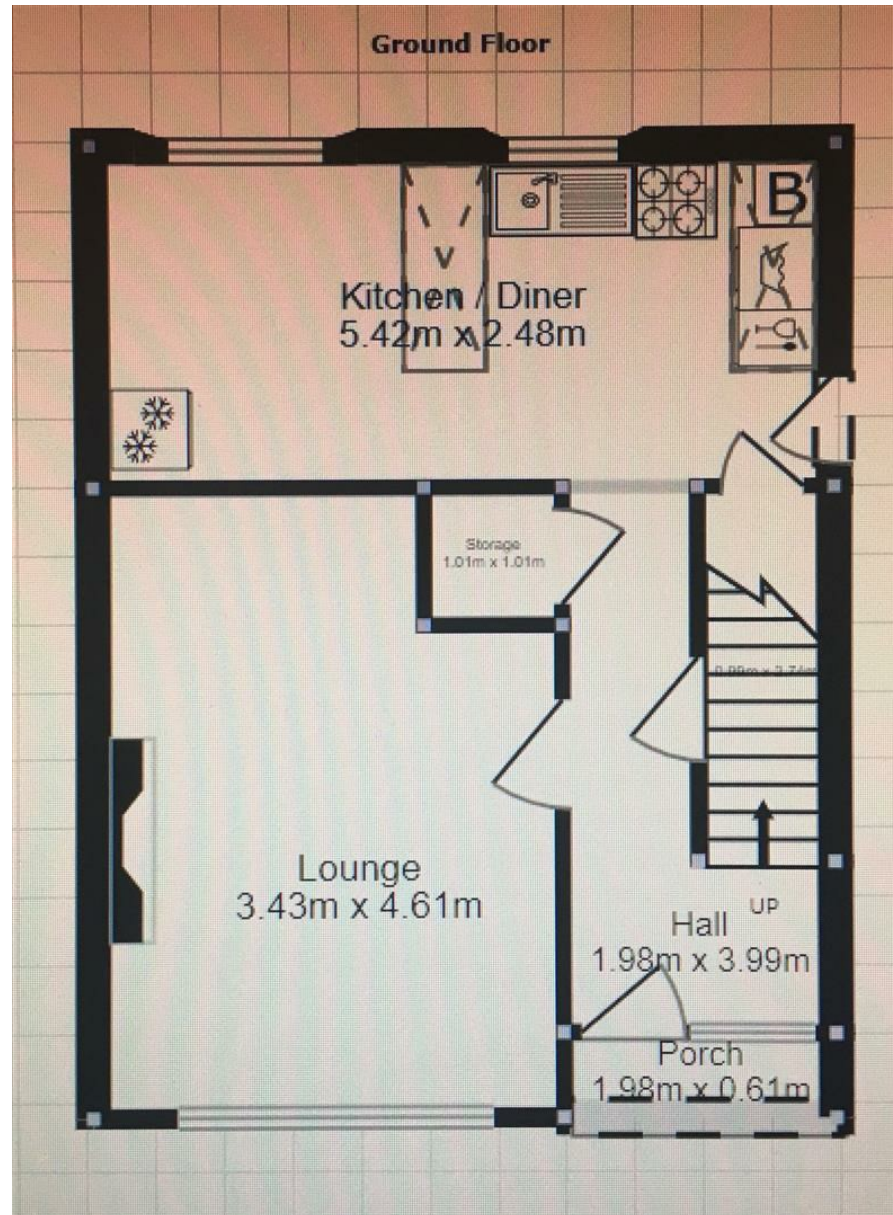
**EPC Rating**

**Local Authority** High Peak

**Council Tax** C

Energy Efficiency Rating		Current	Potential
Very energy efficient - lower running costs			
(92 plus)	A		
(81-91)	B		
(69-80)	C		
(55-68)	D		
(39-54)	E		
(21-38)	F		
(1-20)	G		
Not energy efficient - higher running costs			
<b>England &amp; Wales</b>		EU Directive 2002/91/EC 	





These particulars are believed to be accurate but they are not guaranteed and do not form a contract. Neither Jordan Fishwick nor the vendor or lessor accept any responsibility in respect of these particulars, which are not intended to be statements or representations of fact and any intending purchaser or lessee must satisfy himself by inspection or otherwise as to the correctness of each of the statements contained in these particulars. Any floorplans on this brochure are for illustrative purposes only and are not necessarily to scale.

Offices at: Chorlton, Didsbury, Disley, Hale, Glossop, Macclesfield, Manchester Deansgate, Manchester Whitworth Street, New Mills, Sale, Wilmslow and Withington

2 Union Road, New Mills, High Peak, Derbyshire, SK22 3ES

**01663 767878**

[newmills@jordanfishwick.co.uk](mailto:newmills@jordanfishwick.co.uk)

[www.jordanfishwick.co.uk](http://www.jordanfishwick.co.uk)