



*Jordan fishwick*

Peak Road New Mills High Peak





## Peak Road New Mills High Peak SK22 4LD

£225,000



### The Property

Located within 1/2 a mile of New Mills town centre, a three bedroom mid terraced property. Offered for sale with OFF ROAD PARKING and a private rear garden. Well proportioned accommodation comprising: entrance hall, living room, dining kitchen, three good sized first floor bedrooms and a new bathroom with white suite. Pvc double glazing and gas central heating. Viewing essential.





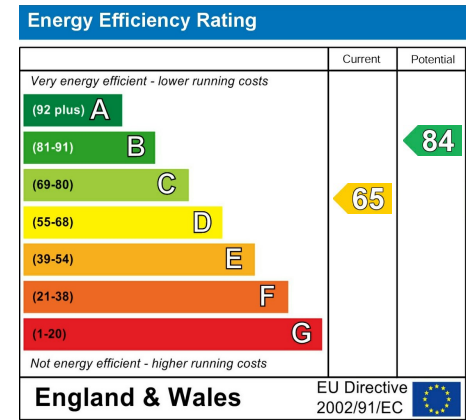
- Ideal Position For New Mills Centre
- Well Proportioned Accommodation
- Three Bedrooms
- Driveway Parking
- Enclosed Garden
- Pvc Double Glazing
- Gas Central Heating
- Great Family Home

**Postcode** SK22 4LD

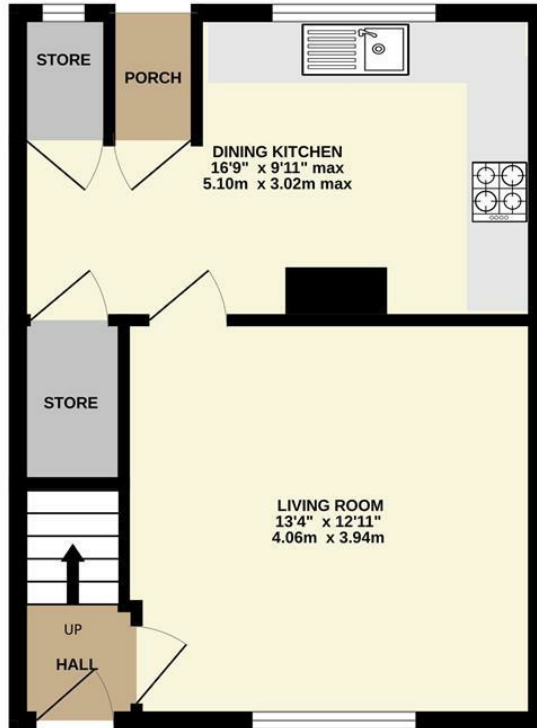
**EPC Rating** D

**Local Authority** High Peak

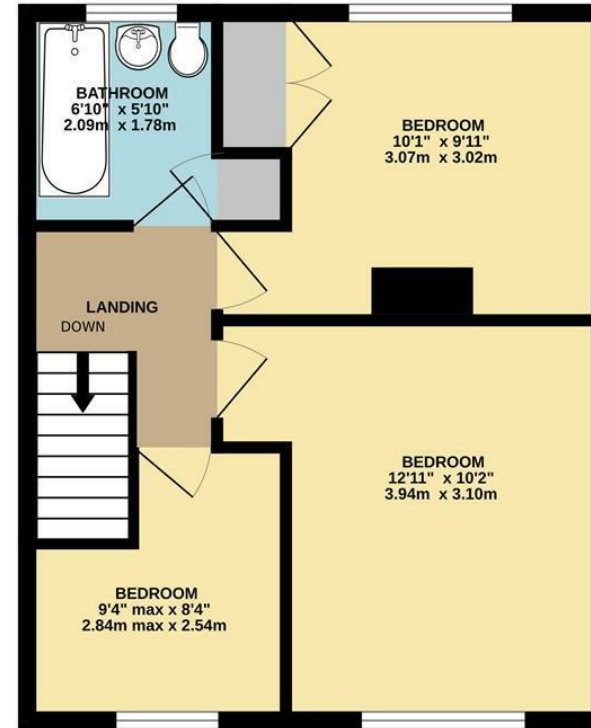
**Council Tax** B



GROUND FLOOR



1ST FLOOR



Whilst every attempt has been made to ensure the accuracy of the floorplan contained here, measurements of doors, windows, rooms and any other items are approximate and no responsibility is taken for any error, omission or mis-statement. This plan is for illustrative purposes only and should be used as such by any prospective purchaser. The services, systems and appliances shown have not been tested and no guarantee as to their operability or efficiency can be given.  
Made with Metropix ©2023



These particulars are believed to be accurate but they are not guaranteed and do not form a contract. Neither Jordan Fishwick nor the vendor or lessor accept any responsibility in respect of these particulars, which are not intended to be statements or representations of fact and any intending purchaser or lessee must satisfy himself by inspection or otherwise as to the correctness of each of the statements contained in these particulars. Any floorplans on this brochure are for illustrative purposes only and are not necessarily to scale.

Offices at: Chorlton, Didsbury, Disley, Hale, Glossop, Macclesfield, Manchester Deansgate, Manchester Whitworth Street, New Mills, Sale, Wilmslow and Withington

2 Union Road, New Mills, High Peak, Derbyshire, SK22 3ES

01663 767878

[newmills@jordanfishwick.co.uk](mailto:newmills@jordanfishwick.co.uk)

[www.jordanfishwick.co.uk](http://www.jordanfishwick.co.uk)