



Jordan fishwick

New Mills Road Hayfield High Peak



New Mills Road Hayfield High Peak SK22 2EX

Offers Around £225,000



The Property

Conveniently located in Hayfield Village and boasting fantastic open front views towards Lantern Pike, an extended 1930's style, bay-fronted, semi-detached home. Offered for sale with No Chain, this spacious four bedroom family property offers tremendous value for money and has to be seen. Private rear garden, wall frontage and comprising: entrance hall, 18ft living room, conservatory, breakfast/dining room, fitted kitchen, four first floor bedrooms and a family bathroom. Pvc double glazing and gas central heating. Viewing highly recommended.




- Private Low Maintenance Gardens
- Four Bedrooms
- No Chain
- 18FT Living Room
- Additional Conservatory and Separate Breakfast Room
- Energy Rating D Council Tax Band C

Postcode SK22 2EX

EPC Rating D

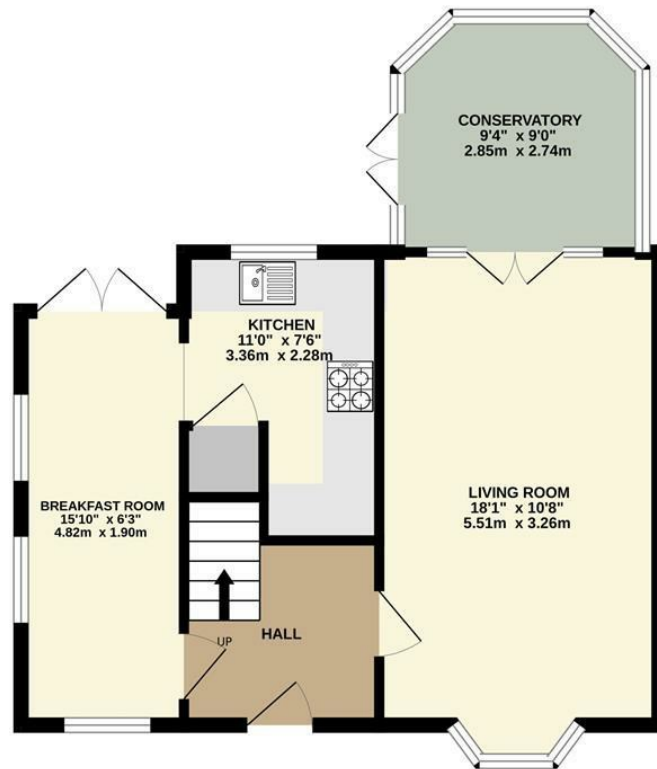
Local Authority High Peak

Council Tax C

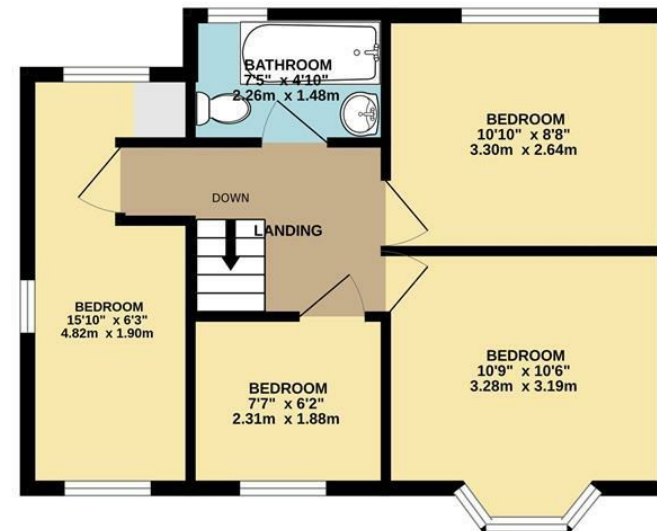
Energy Efficiency Rating		
	Current	Potential
Very energy efficient - lower running costs		
(92 plus) A		
(81-91) B		85
(69-80) C		
(55-68) D	63	
(39-54) E		
(21-38) F		
(1-20) G		
Not energy efficient - higher running costs		
England & Wales	EU Directive 2002/91/EC 	



GROUND FLOOR



1ST FLOOR



Whilst every attempt has been made to ensure the accuracy of the floorplan contained here, measurements of doors, windows, rooms and any other items are approximate and no responsibility is taken for any error, omission or mis-statement. This plan is for illustrative purposes only and should be used as such by any prospective purchaser. The services, systems and appliances shown have not been tested and no guarantee as to their operability or efficiency can be given.
 Made with Metropix ©2024



These particulars are believed to be accurate but they are not guaranteed and do not form a contract. Neither Jordan Fishwick nor the vendor or lessor accept any responsibility in respect of these particulars, which are not intended to be statements or representations of fact and any intending purchaser or lessee must satisfy himself by inspection or otherwise as to the correctness of each of the statements contained in these particulars. Any floorplans on this brochure are for illustrative purposes only and are not necessarily to scale.

Offices at: Chorlton, Didsbury, Disley, Hale, Glossop, Macclesfield, Manchester Deansgate, Manchester Whitworth Street, New Mills, Sale, Wilmslow and Withington

2 Union Road, New Mills, High Peak, Derbyshire, SK22 3ES

01663 767878

newmills@jordanfishwick.co.uk

www.jordanfishwick.co.uk